

Eclipse Series- NEMA 4, 12

Two Door Enclosures



Panel
Sold
Separately



Industrial Enclosures

Wallmount Enclosures

Application

- Designed to enclose electrical and/or electronic equipment and protect against harsh, industrial environments for wallmount applications.
- Impressive styling features like hidden hinges, attractive latching systems make the Eclipse a suitable addition to any high-tech equipment installation.
- A wide range of sizes and practical accessories make this product line a complete package.
- For high temperature applications, a gasket retainer may be required, please refer to factory.

Standards

- UL 508 Type 3R, 4 and 12
- CSA Type 3R, 4 and 12
- **Complies with**
 - NEMA 3R, 4 and 12
 - IEC 60529, IP66

Construction

- Formed 14 gauge steel.
- Smooth, continuously welded seams ground smooth.
- Door stiffeners are provided for increased strength and rigidity also designed to permit additional mounting options.
- Formed lip on enclosure to exclude flowing liquids and contaminants.
- Doors may be easily removed for modifications and are interchangeable.
- Oil resistant gaskets are permanently secured.
- Collar studs provided for mounting inner panel.
- Includes hardware kit with panel mounting nuts and sealing washers for wall mounting holes.
- Bonding stud provided on door and grounding stud installed in enclosure.
- Doors are secured with a three point key lockable handle.
- Hinges are constructed from 304 stainless steel.
- Key lockable handle is zinc diecast with black epoxy finish.
- Hinge pins are stainless steel.

Finish

- Cover and enclosure are phosphatized and finished with a recoatable powder inside and out with choice of ANSI 61 smooth Gray (GY) or RAL7035 textured light gray (LG).
- RAL7032 textured beige (CG) versions with gland plates are available as non-stock items.

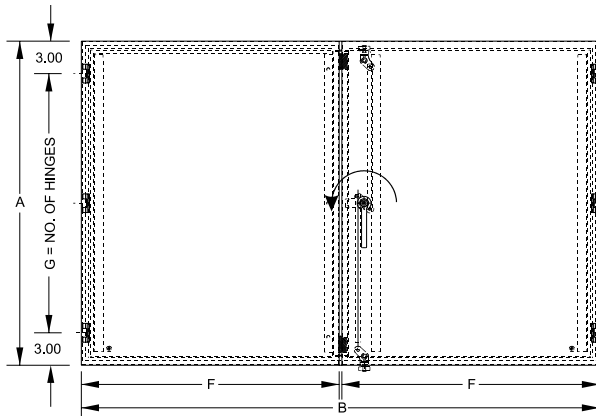
Accessories

- Air conditioners...see page **387-406**
- Blowers...see page **406**
- Breather kits...see page **423**
- DIN rails...see page **29**
- DIN rail mounting kit...see page **29**
- Door stop kit...see page **447**
- Filter fans...see page **408-413**
- Gland plates...see page **441**
- Heaters...see page **418-420**
- Handles...see page **30**
- Inner panel...see page **28**
- Literature pocket...see page **451**
- Replacement hinge pins...see page **28**
- Thermostats...see page **421**
- Touch up paint...see page **450**
- UL/CSA approved hardware kit...see page **430**
- Window kits...see page **444**

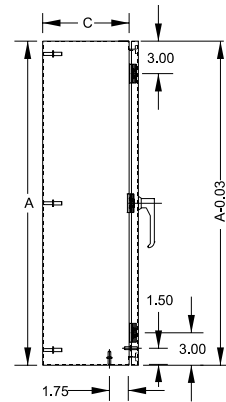
Eclipse Series - NEMA 4, 12

Two Door Enclosures

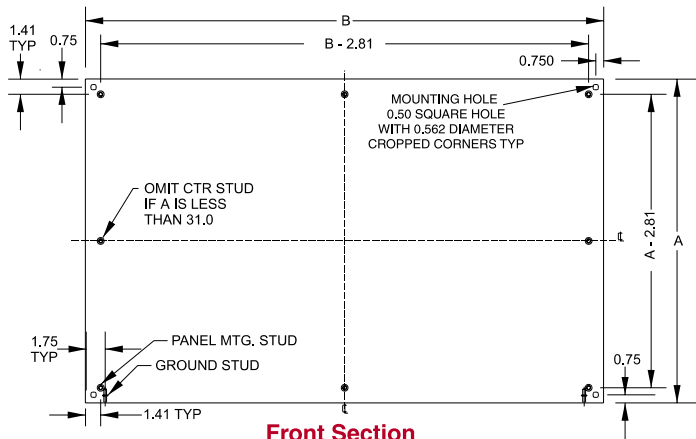
Industrial Enclosures Wallmount Enclosures



Front View

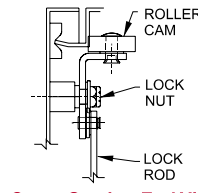


Side View - Hinge Side

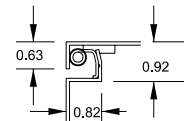


Front Section

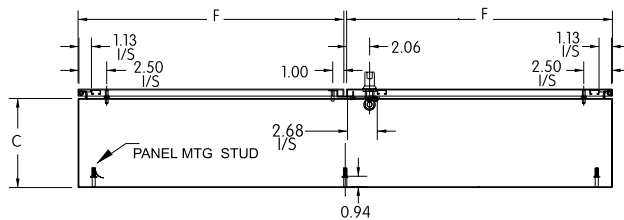
Door & Body Flange Removed



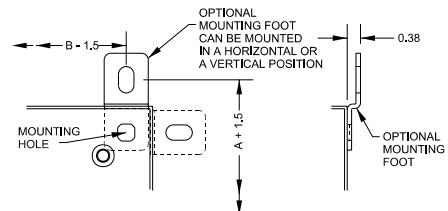
Cross Section End View of Top and Bottom
Door Cam typ 2 pls.



Cross Section of 14 gauge Body & Door



End View



Mounting Detail

Door & Body Flange Removed

Part No. (ANSI 61 Gray)	Part No. (RAL7035 Light Gray)	Overall Dimensions				# of Hinges G	Optional Panel Part No.	Panel Size		Ship Wt. Lbs
		A	B	C	F			D	E	
EN4TD24428GY	EN4TD24428LG	24	42	8	20.88	2	EP2442	22.2	40.2	80
EN4TD24488GY	EN4TD24488LG	24	48	8	23.88	2	EP4824	46.2	22.2	95
EN4TD30488GY	EN4TD30488LG	30	48	8	23.88	3	EP3048	28.2	46.2	105
EN4TD244210GY	EN4TD244210LG	24	42	10	20.88	2	EP2442	22.2	40.2	85
EN4TD304210GY	EN4TD304210LG	30	42	10	20.88	3	EP3042	28.2	40.2	117
EN4TD304810GY	EN4TD304810LG	30	48	10	23.88	3	EP3048	28.2	46.2	112
EN4TD306010GY	EN4TD306010LG	30	60	10	29.88	3	EP3060	28.2	58.2	145
EN4TD306012GY	EN4TD306012LG	30	60	12	29.88	3	EP3060	28.2	58.2	152
EN4TD364212GY	EN4TD364212LG	36	42	12	20.88	3	EP4236	42.2	34.2	121
EN4TD364812GY	EN4TD364812LG	36	48	12	23.88	3	EP3648	34.2	46.1	135
EN4TD366012GY	EN4TD366012LG	36	60	12	29.88	3	EP3660	34.2	58.2	165

Technical references and DXF downloads available at www.hamfmfg.com

All dimensions in inches unless specified otherwise

Quality Enclosures. Service Excellence.