



GENERAL INFORMATION

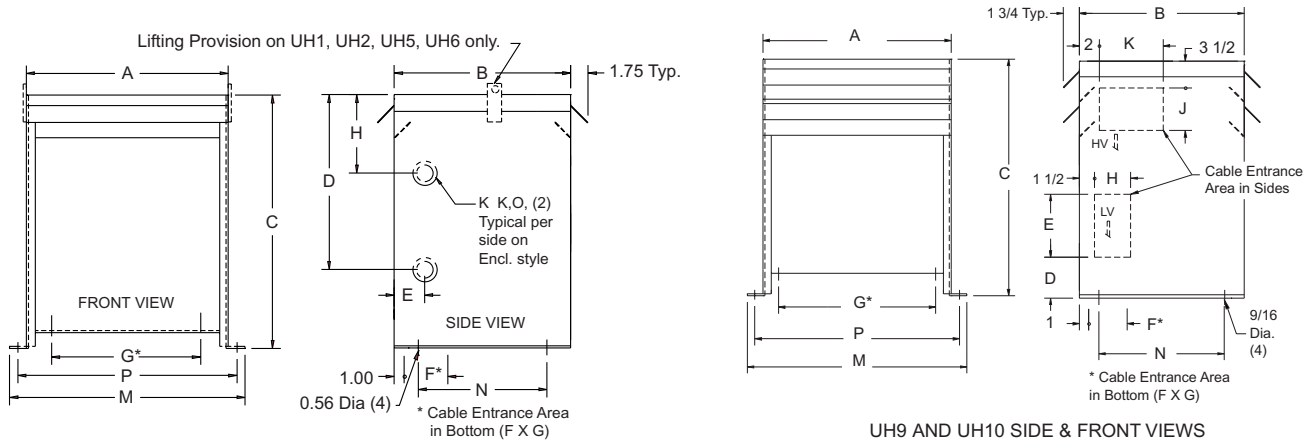
Dimension Drawings, Connection Diagrams, Termination Details, Alpha-Numeric Part Number Index

Dimension Drawings	254
Electrical Connection Diagrams	258
Termination Details	270
Accessories - For General Purpose Transformers	273
Alpha-Numeric Part Number Index	274
Hammond Transformer Literature Request Form	288

GENERAL INFORMATION

DIMENSIONAL DRAWINGS

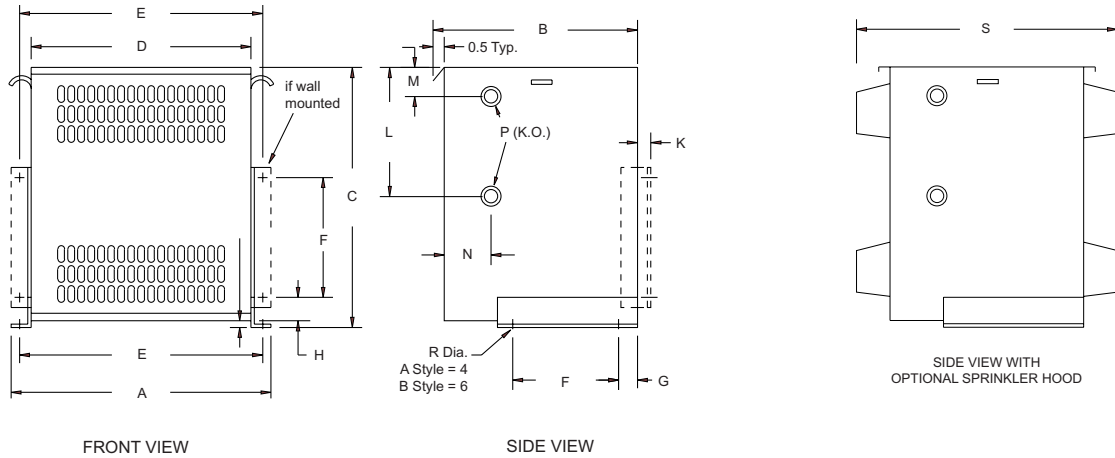
'UH' SERIES ENCLOSURES



Case Style	Dimensions in Inches											
	A	B	C	D	E	F	G	H	K	M	N	P
UH1	16.75	14.00	22.00	11.00	2.50	2.25	9.00	6.00	1.38 X 1.75	19.25	9.00	18.25
UH2	21.50	19.50	29.00	15.00	2.50	3.25	14.00	6.00	1.38 X 2.50	24.00	14.50	23.00
UH3	26.00	21.00	38.00	24.00	3.00	4.75	18.00	8.00	2.00 X 3.00	28.50	16.00	27.50
UH4	30.00	24.00	39.00	24.00	3.00	3.75	20.00	9.00	2.00 X 3.00	32.50	19.00	31.50
UH5	13.00	14.00	23.00	10.00	2.50	2.25	6.00	6.00	1.38 X 1.75	15.50	9.00	14.50
UH6	16.00	19.00	31.00	15.00	2.50	2.75	7.00	6.00	2.00 X 3.00	18.50	14.00	17.50
UH7	19.50	21.00	35.00	20.00	3.00	5.25	10.00	8.00	2.00 X 3.00	22.00	16.00	21.00
UH8	24.00	25.00	39.00	24.00	3.00	4.75	11.00	9.00	2.00 X 3.00	26.50	20.00	25.50
UH9	26.50	26.00	44.00	5.00	4.00	5.00	22.50	4.50	10.00	28.50	21.50	27.50
UH10	34.00	30.00	44.00	5.00	6.00	6.00	26.50	5.00	10.00	32.50	29.00	31.50

Note: J dimension for UH9 = 3.50". J dimension for UH10 = 4.00"

'A' & 'H' SERIES ENCLOSURES



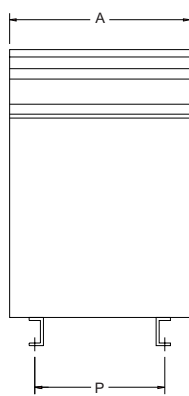
Case Style	Dimensions in Inches														
	A	B	C	D	E	F	G	H	K	L	M	N	P	R	S
A1*	12.00	7.00	10.20	10.00	11.40	5.00	0.50	0.50	0.60	5.50	1.60	1.00	0.5 X 0.75	0.31	10.00
A2*	17.25	11.25	14.00	14.75	16.50	7.00	0.90	0.90	0.40	9.50	2.00	1.00	0.75 X 1.0	0.40	13.25
H1	19.50	16.50	19.00	16.50	18.50	10.00	2.00	3.25	2.50	10.00	2.00	2.50	1.0 X 1.25	0.56	22.50
H2	24.50	20.50	24.50	21.50	23.50	10.00	2.00	3.25	2.50	12.00	2.50	2.50	1.0 X 2.0	0.56	26.50
H3	30.00	24.00	32.50	27.00	29.00	16.00	2.00	3.25	2.50	13.00	3.00	3.00	1.5 X 2.5	0.56	30.00
H4	33.00	26.00	36.00	30.00	32.00	16.00	2.00	3.25	2.50	13.00	3.00	3.00	1.5 X 2.5	0.56	32.00
H5	16.00	16.50	18.00	13.00	15.00	10.00	2.00	3.25	2.50	7.50	2.00	2.50	1.0 X 1.25	0.56	22.50
H6	21.25	20.00	28.00	18.25	20.25	10.00	2.00	3.25	2.50	12.50	3.00	2.50	1.5 X 2.5	0.56	26.00
H7	24.00	26.00	30.00	21.00	23.00	16.00	2.00	3.25	2.50	13.00	3.00	3.00	1.5 X 2.5	0.56	32.00
H8	27.00	26.00	36.00	24.00	26.00	16.00	2.00	3.25	2.50	13.00	3.00	3.00	1.5 X 2.5	0.56	32.00

* No ventilation slots in rear.

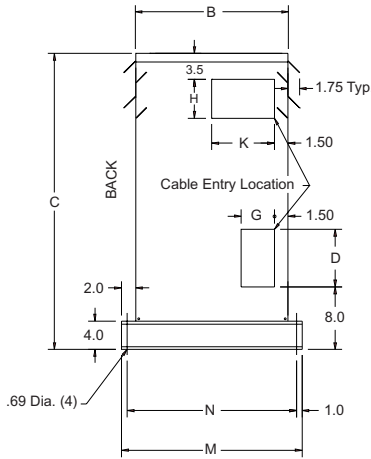
GENERAL INFORMATION

DIMENSIONAL DRAWINGS

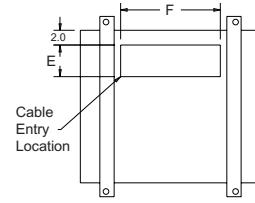
'UJ' SERIES ENCLOSURES



FRONT VIEW



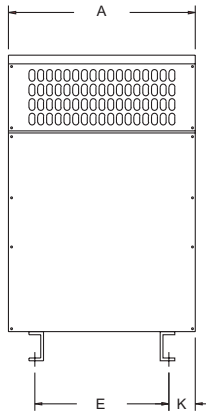
SIDE VIEW



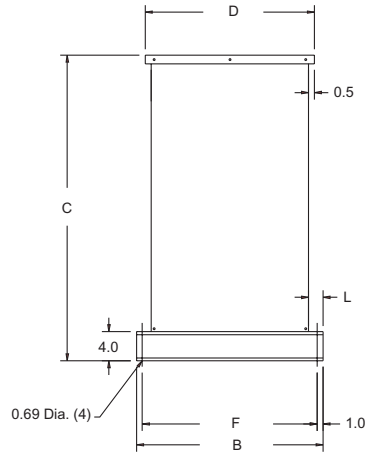
BOTTOM VIEW

Case Style	Dimensions in Inches											
	A	B	C	D	E	F	G	H	K	M	N	P
UJ1	39.50	30.00	50.00	10.00	7.50	21.50	8.00	6.50	13.50	34.00	32.00	24.00
UJ2	48.50	34.00	59.00	13.00	8.50	25.00	9.00	8.50	15.50	38.00	36.00	27.50
UJ3	51.50	39.00	66.00	16.00	9.50	31.50	10.00	11.50	18.00	43.00	41.00	34.00
UJ4	32.00	28.50	50.00	10.00	8.50	19.50	9.00	6.50	12.75	32.50	30.50	22.00
UJ5	36.00	29.50	44.00	5.00	6.50	21.50	10.00	6.50	12.75	33.00	31.00	24.00
UJ6	64.00	40.00	68.00	16.00	10.50	37.50	11.00	11.50	18.00	43.50	41.50	40.00

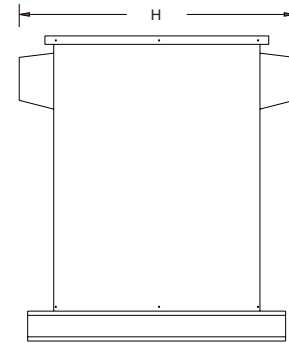
'J' SERIES ENCLOSURES



FRONT VIEW



SIDE VIEW



SIDE VIEW WITH
OPTIONAL SPRINKLER HOOD

Case Style	Dimensions in Inches								
	A	B	C	D	E	F	H	K	L
J1	39.72	37.00	50.00	34.25	24.00	35.00	40.00	7.75	2.00
J2	48.75	41.00	59.00	38.25	27.50	39.00	44.00	10.50	2.00
J3	51.75	46.00	66.00	43.25	34.00	44.00	49.00	8.75	2.00
J4	32.25	35.00	50.00	32.25	22.00	33.00	38.00	5.00	2.00
J5	36.00	33.00	44.00	29.50	24.00	31.00	35.50	6.00	2.25
J6	64.00	43.50	68.00	40.00	40.00	41.50	46.00	12.00	2.25

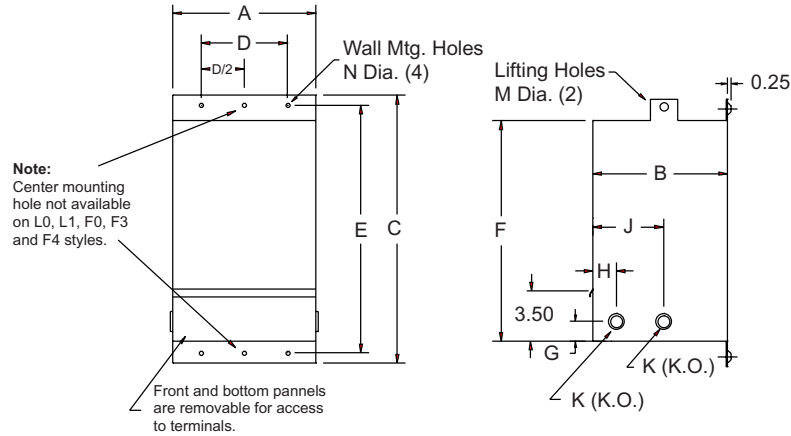
GENERAL
INFORMATION



GENERAL INFORMATION

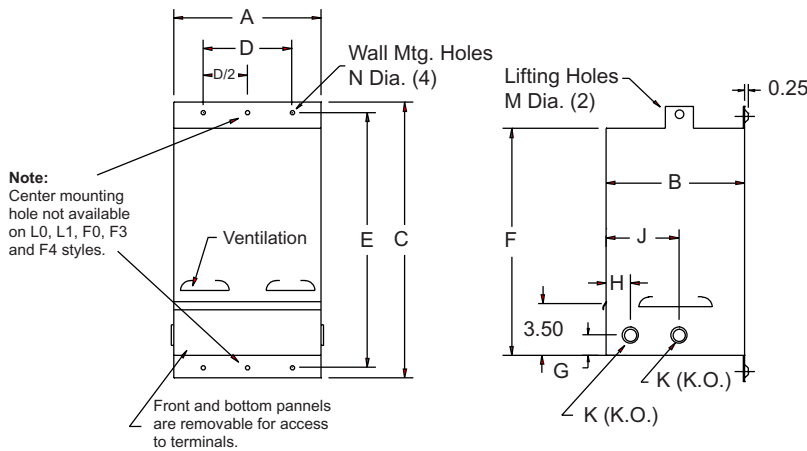
DIMENSIONAL DRAWINGS

'F' & 'L' SERIES ENCLOSURES



Case Style	Dimensions in Inches											
	A	B	C	D	E	F	G	H	J	K	M	N
L0	7.00	7.00	14.75	4.50	13.00	11.13	1.50	2.50	-	.50 X .75	0.75	0.265
L1	9.00	8.50	17.50	5.50	15.75	13.88	2.00	1.50	7.00	.75 X 1.0	0.75	0.265
L2	12.50	8.00	23.00	9.00	21.25	19.38	2.00	1.50	6.88	.75 X 1.0	0.75	0.265
L3	12.50	6.00	16.50	9.00	14.75	12.88	2.00	1.50	4.50	.75 X 1.0	0.75	0.265
L4	16.50	6.00	19.00	13.00	17.25	15.38	1.50	2.00	4.50	1.0 X 1.25	0.75	0.265
L5	7.50	7.75	15.94	5.50	14.20	12.80	1.50	2.50	-	0.5 X 0.75	0.75	0.265
F0	8.00	7.50	15.00	5.50	14.20	12.50	1.50	2.75	-	.75 X 1.0	0.75	0.312
F1	8.75	9.00	15.50	5.75	14.68	13.13	2.00	3.50	-	.75 X 1.0	0.75	0.312
F2	10.75	8.50	16.50	7.50	15.68	14.13	2.00	3.50	-	.75 X 1.0	0.75	0.312
F3	11.75	8.13	19.50	8.75	18.68	17.13	2.00	3.50	-	1.0 X 2.0	0.75	0.375
F4	13.50	9.44	21.75	10.50	21.00	19.38	2.00	4.00	-	1.0 X 2.0	0.75	0.437

'L6 to L13' SERIES ENCLOSURES



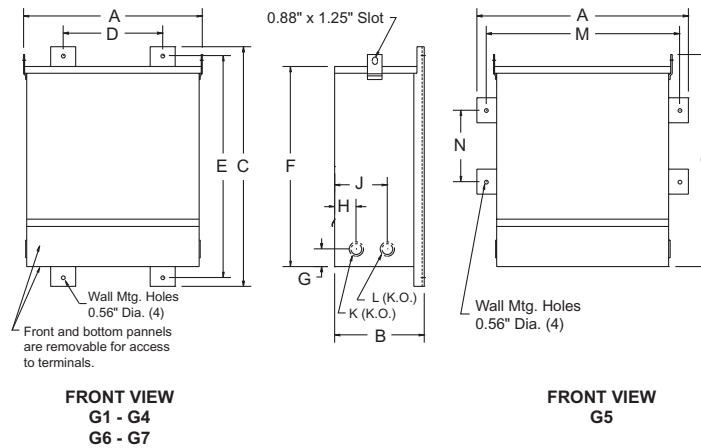
Case Style	Dimensions in Inches											
	A	B	C	D	E	F	G	H	J	K	M	N
L6	6.75	4.75	14.38	4.00	13.63	12.00	1.38	1.50	-	0.5 X 0.75	0.75	0.312
L7	6.75	6.25	14.38	4.00	13.63	12.00	1.38	1.50	-	0.5 X 0.75	0.75	0.312
L8	9.00	7.25	17.25	6.25	16.50	15.00	2.38	1.25	-	0.5 X 0.75	0.75	0.312
L9	9.00	8.50	18.25	6.25	17.50	16.00	2.75	2.25	-	0.5 X 0.75	0.75	0.312
L10	11.50	7.50	20.75	8.75	20.00	18.44	-	-	-	-	0.75	0.312
L11	11.50	9.00	20.75	8.75	20.00	18.44	-	-	-	-	0.75	0.312
L12	13.00	12.00	20.50	10.28	19.44	17.44	-	-	-	-	0.75	0.406
L13	15.00	12.00	25.00	12.50	23.94	21.92	-	-	-	-	0.75	0.406

GENERAL INFORMATION

GENERAL INFORMATION

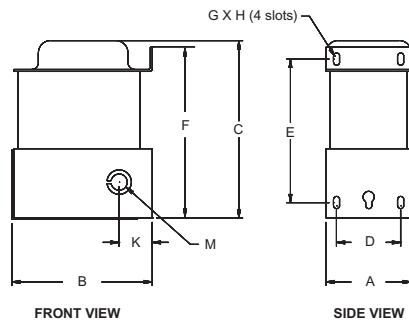
DIMENSIONAL DRAWINGS

'G' SERIES ENCLOSURES

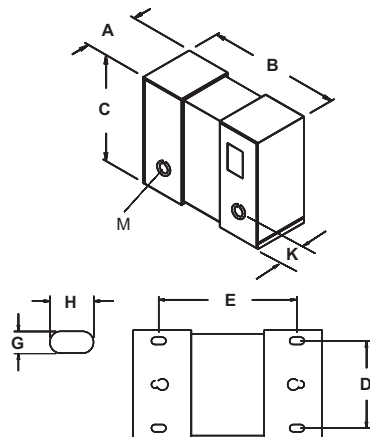


Case Style	Dimensions in Inches												
	A	B	C	D	E	F	G	H	J	K	L	M	N
G1	17.44	7.00	21.50	8.31	20.00	17.50	2.25	1.63	4.88	1.0 X 1.25	0.75 X 1.0	-	-
G2	17.44	8.50	21.50	8.50	20.00	17.50	2.25	1.88	5.63	1.0 X 1.25	0.75 X 1.0	-	-
G3	19.44	9.50	26.50	10.00	25.00	22.50	2.50	2.63	6.88	1.5 X 2.0	1.0 X 1.25	-	-
G4	22.94	10.25	30.00	13.81	28.50	25.00	2.75	2.63	7.38	1.5 X 2.0	1.0 X 1.25	-	-
G5	16.50	12.75	27.50	-	-	24.40	1.50	2.50	8.50	1.0 X 1.25	1.0 X 1.25	14.60	12.50
G6	18.00	14.00	35.00	10.00	32.50	30.00	2.75	3.25	9.25	1.5 X 2.0	1.0 X 1.25	-	-
G7	33.75	13.00	35.00	20.00	32.75	30.00	2.75	2.25	8.75	1.0 X 1.25	2.0 X 2.0	-	-

'M' SERIES ENCLOSURES



Case Style	Dimensions in Inches								Knockout	
	A	B	C	D	E	F	G X H	K	M	
M01	2.5	3.37	4.06	2.00	3.16	4.19"	.20 X .56	1.25	.50	
M02	2.5	3.37	4.56	2.00	3.66	4.69	.20 X .56	1.25	.50	
M11	3.13	4.00	4.63	2.25	3.88	4.50	.25 X .50	1.25	.50	
M12	3.13	4.00	4.88	2.25	4.13	4.50	.25 X .50	1.25	.50	
M13	3.13	4.00	5.38	2.25	4.63	5.25	.25 X .50	1.25	.50	
M21	3.75	4.75	4.56	2.75	3.56	4.28	.25 X .50	1.25	.50 X .75	
M22	3.75	4.75	4.81	2.75	3.81	4.28	.25 X .50	1.25	.50 X .75	
M23	3.75	4.75	5.56	2.75	4.56	5.28	.25 X .50	1.25	.50 X .75	
M24	3.75	4.75	6.06	2.75	4.81	5.28	.25 X .50	1.25	.50 X .75	
M31	4.31	5.50	7.41	3.25	5.58	6.75	.31 X .63	1.00	.50 X .75	
M32	4.31	5.50	7.91	3.25	6.08	7.25	.31 X .63	1.25	.50 X .75	



'E' SERIES ENCLOSURES

Case Style	Dimensions in Inches							Knockout	
	A	B	C	D	E	F	G X H	K	M
E01	5.31	9.50	6.75	4.25	7.50	-	.31 X .63	1.25	.50 X .75
E02	5.31	10.50	6.75	4.25	8.50	-	.31 X .63	1.25	.50 X .75
E11	6.25	10.50	8.00	5.00	9.00	-	.31 X .63	1.25	.50 X .75
E21	7.5	10.75	9.50	6.00	9.25	-	.38 X .75	1.25	.75 X 1.00

GENERAL INFORMATION



GENERAL INFORMATION

ELECTRICAL SCHEMATICS AND CONNECTION DIAGRAMS

SCD 1

SCHEMATIC		CONNECTIONS		
	Primary Volts	Connect lines to	Inter-connect	
	480 416	H1, H4	H2-H3	
	240 208	H1, H4	H1-H3, H2-H4	
	Secondary Volts	Connect lines to	Inter-connect	
	240	X1, X4	X2-X3	
	120/240	X1, X2, X4	X2-X3	
120	X1, X4	X2-X4, X1-X3		

SCD 2

SCHEMATIC		CONNECTIONS		
	Primary Volts	Connect lines to	Inter-connect	
	480	H1, H2	1-2	
	468	H1, H2	2-3	
	456	H1, H2	3-4	
	240	H1, H2	H1-2, H2-1	
	228	H1, H2	H1-4, H2-3	
Secondary Volts	Connect lines to	Inter-connect		
240	X1, X4	X2-X3		
120/240	X1, X2, X4	X2-X3		
120	X1, X4	X2-X4, X1-X3		

SCD 3

SCHEMATIC		CONNECTIONS		
	Primary Volts	Connect lines to	Inter-connect	
	504	H1, H4	1-H2, 2-H3, H2-H3	
	492	H1, H4	2-H3, 3-H2, H2-H3	
	480	H1, H4	3-H2, 4-H3, H2-H3	
	468	H1, H4	4-H3, 5-H2, H2-H3	
	456	H1, H4	5-H2, 6-H3, H2-H3	
	252	H1, H4	1-H2, 2-H3, H1-H3, H2-H4	
	240	H1, H4	3-H2, 4-H3, H1-H3, H2-H4	
	228	H1, H4	5-H2, 6-H3, H1-H3, H2-H4	
	Secondary Volts	Connect lines to	Inter-connect	
240	X1, X4	X2-X3		
120/240	X1, X2, X4	X2-X3		
120	X1, X4	X2-X4, X1-X3		

SCD 4

SCHEMATIC		CONNECTIONS		
	Primary Volts	Connect lines to	Inter-connect	
	208 277 347 380 416 600	H1, H2	---	
	Secondary Volts	Connect lines to	Inter-connect	
	240	X1, X4	X2-X3	
120/240	X1, X2, X4	X2-X3		
120	X1, X4	X2-X4, X1-X3		

GENERAL
INFORMATION

GENERAL INFORMATION

ELECTRICAL SCHEMATICS AND CONNECTION DIAGRAMS

SCD 5

SCHEMATIC		CONNECTIONS		
	Primary Volts		Connect lines to	Inter-connect
	208 240 277 416 480 600	H1, H2	1-2	
	198 228 263 395 456 570	H1, H2	2-3	
187 216 249 374 432 540	H1, H2	3-4		
120 208 240	H1, H2	H1-2, H2-1		
108 187 216	H1, H2	H1-4, H2-3		
Secondary Volts		Connect lines to	Inter-connect	
240		X1, X4	X2-X3	
120/240		X1, X2, X4	X2-X3	
120		X1, X4	X2-X4, X1-X3	

SCD 6

SCHEMATIC		CONNECTIONS		
	Primary Volts		Connect lines to	Inter-connect
	218 291 437 504 630 2520 4368	H1, H2	1-2	
	213 284 426 492 615 2460 4264	H1, H2	2-3	
208 277 416 480 600 2400 4160	H1, H2	3-4		
203 270 406 468 585 2340 4056	H1, H2	4-5		
198 263 395 456 570 2280 3952	H1, H2	5-6		
Secondary Volts		Connect lines to	Inter-connect	
240		X1, X4	X2-X3	
120/240		X1, X2, X4	X2-X3	
120		X1, X4	X2-X4, X1-X3	

SCD 7

SCHEMATIC		CONNECTIONS		
	Primary Volts		Connect lines to	Inter-connect
	218 252 437 483 504 630	H1, H2, H3	1	
	208 240 416 460 480 600	H1, H2, H3	2	
198 228 395 437 456 570	H1, H2, H3	3		
Secondary Volts		Connect lines to		
208 230 240 380 416 460 480 600		X1, X2, X3		
120 133 139 220 240 265 277 347		X1, X0 X2, X0 X3, X0		

SCD 8

SCHEMATIC		CONNECTIONS		
	Primary Volts		Connect lines to	Inter-connect
	218 252 437 483 504 630 2520 4368	H1, H2, H3	1-2	
	208 240 416 460 480 600 2400 4160	H1, H2, H3	2-3	
198 228 395 437 456 570 2280 3952	H1, H2, H3	3-4		
Secondary Volts		Connect lines to		
208 230 240 380 416 460 480 600		X1, X2, X3		
120 133 139 220 240 265 277 347		X1, X0 X2, X0 X3, X0		

GENERAL INFORMATION

GENERAL INFORMATION

ELECTRICAL SCHEMATICS AND CONNECTION DIAGRAMS

SCD 9

SCHEMATIC		CONNECTIONS			
		Primary Volts		Connect lines to	Inter-connect
		218 252 437 483 504 630 2520 4368	H1, H2, H3	1	
		213 246 426 574 492 615 2460 4264	H1, H2, H3	2	
		208 240 416 460 480 600 2400 4160	H1, H2, H3	3	
		203 234 406 449 468 585 2340 4056	H1, H2, H3	4	
		198 228 395 437 456 570 2280 3952	H1, H2, H3	5	
		Secondary Volts		Connect lines to	Inter-connect
208 380 416 480 600	X1, X2, X3	-			
120 220 240 277 347	X1, X0	-			
	X2, X0	-			
	X3, X0	-			

SCD 10

SCHEMATIC		CONNECTIONS			
		Primary Volts		Connect lines to	Inter-connect
		218 252 437 483 504 630 2520 4368	H1, H2, H3	1-2	
		213 246 426 574 492 615 2460 4264	H1, H2, H3	2-3	
		208 240 416 460 480 600 2400 4160	H1, H2, H3	3-4	
		203 234 406 449 468 585 2340 4056	H1, H2, H3	4-5	
		198 228 395 437 456 570 2280 3952	H1, H2, H3	5-6	
		Secondary Volts		Connect lines to	Inter-connect
208 380 416 480 600	X1, X2, X3	-			
120 220 240 277 347	X1, X0	-			
	X2, X0	-			
	X3, X0	-			

SCD 11

SCHEMATIC		CONNECTIONS		
		Primary Volts		Inter-connect
		252 504	H1, H2, H3	1
		240 480	H1, H2, H3	2
		228 456	H1, H2, H3	3
		Secondary Volts		Connect lines to
240	X1, X2, X3	-		

SCD 12

SCHEMATIC		CONNECTIONS		
		Primary Volts		Inter-connect
		480 600	H1, H2, H3	1-2
		456 570	H1, H2, H3	2-3
		432 540	H1, H2, H3	3-4
		Secondary Volts		Connect lines to
240	X1, X2, X3	-		

GENERAL INFORMATION

ELECTRICAL SCHEMATICS AND CONNECTION DIAGRAMS

SCD 13

SCHEMATIC		CONNECTIONS		
	Primary Volts	Connect lines to	Inter-connect	
	480 600	H1, H2, H3	1-2	
	456 570	H1, H2, H3	2-3	
432 540	H1, H2, H3	3-4		
Secondary Volts	Connect lines to	Inter-connect		
240	X1, X2, X3	-		
120	X1, X6	-		
	X3, X6	-		

SCD 14

SCHEMATIC		CONNECTIONS		
	Primary Volts	Connect lines to	Inter-connect	
	504	H1, H2, H3	1	
	492	H1, H2, H3	2	
480	H1, H2, H3	3		
468	H1, H2, H3	4		
456	H1, H2, H3	5		
Secondary Volts	Connect lines to	Inter-connect		
240	X1, X2, X3	-		
120	X1, X6	-		
	X3, X6	-		

SCD 15

SCHEMATIC		CONNECTIONS		
	Primary Volts	Connect lines to	Inter-connect	
	504	H1, H2, H3	1-2	
	492	H1, H2, H3	2-3	
480	H1, H2, H3	3-4		
468	H1, H2, H3	4-5		
456	H1, H2, H3	5-6		
Secondary Volts	Connect lines to	Inter-connect		
240	X1, X2, X3	-		
120	X1, X6	-		
	X3, X6	-		

SCD 16

SCHEMATIC		CONNECTIONS		
	Primary Volts	Connect lines to	Inter-connect	
	218 504 504 630	H1, H2, H3	1	
	208 480 480 600	H1, H2, H3	2	
198 456 456 570	H1, H2, H3	3		
Secondary Volts	Connect lines to	Inter-connect		
240	X1, X2, X3	-		

GENERAL INFORMATION



GENERAL INFORMATION

ELECTRICAL SCHEMATICS AND CONNECTION DIAGRAMS

SCD 17

SCHEMATIC	CONNECTIONS			
	Primary Volts		Connect lines to	Inter-connect
	504	630	H1, H2, H3	1
	492	615	H1, H2, H3	2
	480	600	H1, H2, H3	3
	468	585	H1, H2, H3	4
456	570	H1, H2, H3	5	
Secondary Volts		Connect lines to	Inter-connect	
240		X1, X2, X3		

SCD 18

SCHEMATIC	CONNECTIONS			
	Primary Volts		Connect lines to	Inter-connect
	218	437 504 630	H1, H6	-
	213	426 492 615	H1, H5	-
	208	416 480 600	H1, H4	-
	203	406 468 585	H1, H3	-
198	395 456 570	H1, H2	-	
Secondary Volts		Connect lines to	Inter-connect	
240		X1, X4	X2-X3	
120/240		X1, X2, X4	X2-X3	
120		X1, X4	X2-X4, X1-X3	

SCD 19

SCHEMATIC	CONNECTIONS				
	Primary Volts		Connect lines to	Inter-connect	
	504		H1, H4	1-H2, 2-H3, H2-H3	
	492		H1, H4	3-H2, 2-H3, H2-H3	
	480		H1, H4	3-H2, 4-H3, H2-H3	
	468		H1, H4	5-H2, 4-H3, H2-H3	
	456		H1, H4	5-H2, 6-H3, H2-H3	
	444		H1, H4	7-H2, 6-H3, H2-H3	
	432		H1, H4	7-H2, 8-H3, H2-H3	
	252		H1, H4	1-H2, 2-H3, H1-H3, H2-H4	
	240		H1, H4	3-H2, 4-H3, H1-H3, H2-H4	
	228		H1, H4	5-H2, 6-H3, H1-H3, H2-H4	
	216		H1, H4	7-H2, 8-H3, H1-H3, H2-H4	
	Secondary Volts		Connect lines to	Inter-connect	
	240		X1, X4	X2- X3	
	120		X1, X2	X1-X3, X2-X4	
120/240		X1, X2, X4	X2-X3		

SCD 20

SCHEMATIC	CONNECTIONS			
	Primary Volts		Connect lines to	Inter-connect
	218	252 291 437 504 630	H1, H4	-
	208	240 277 416 480 600	H1, H3	-
	198	228 263 395 456 570	H1, H2	-
	188	216 249 374 432 540	H1, H2	-
Secondary Volts		Connect lines to	Inter-connect	
240		X1, X4	X2-X3	
120		X1, X2	X1-X3, X2-X4	
		X1, X2, X4	X2-X3	

GENERAL INFORMATION



GENERAL INFORMATION

ELECTRICAL SCHEMATICS AND CONNECTION DIAGRAMS

SCD 21

SCHEMATIC	CONNECTIONS				
	Primary Volts	Connect lines to	Inter-connect		
	218	504	630	H1, H2, H3	1-H1, 1-H2, 1-H3
	213	492	615	H1, H2, H3	2-H1, 2-H2, 2-H3
	208	480	600	H1, H2, H3	3-H1, 3-H2, 3-H3
	203	468	585	H1, H2, H3	4-H1, 4-H2, 4-H3
	198	456	570	H1, H2, H3	5-H1, 5-H2, 5-H3
	193	444	556	H1, H2, H3	6-H1, 6-H2, 6-H3
	188	432	542	H1, H2, H3	7-H1, 7-H2, 7-H3
	Secondary Volts	Connect lines to	Inter-connect		
	208	X1, X2, X3	-		
	120	X1, X0	-		
	X2, X0	-			
	X3, X0	-			

SCD 22

SCHEMATIC	CONNECTIONS				
	Primary Volts	Connect lines to	Inter-connect		
	218	504		H1, H2, H3	1-2
	213	492		H1, H2, H3	2-3
	208	480		H1, H2, H3	3-4
	203	468		H1, H2, H3	4-5
	198	456		H1, H2, H3	5-6
	193	444		H1, H2, H3	6-7
	188	432		H1, H2, H3	7-8
	Secondary Volts	Connect lines to	Inter-connect		
	208	X1, X2, X3	-		
	120	X1, X0	-		
	X2, X0	-			
	X3, X0	-			

SCD 23

SCHEMATIC	CONNECTIONS				
	Primary Volts	Connect lines to	Inter-connect		
	504			H1, H2, H3	1-H1, 1-H2, 1-H3
	492			H1, H2, H3	2-H1, 2-H2, 2-H3
	480			H1, H2, H3	3-H1, 3-H2, 3-H3
	468			H1, H2, H3	4-H1, 4-H2, 4-H3
	456			H1, H2, H3	5-H1, 5-H2, 5-H3
	444			H1, H2, H3	6-H1, 6-H2, 6-H3
	432			H1, H2, H3	7-H1, 7-H2, 7-H3
	Secondary Volts	Connect lines to	Inter-connect		
	240	X1, X2, X3	-		
	120	X1, X6	-		
	X3, X6	-			

GENERAL INFORMATION



GENERAL INFORMATION

ELECTRICAL SCHEMATICS AND CONNECTION DIAGRAMS

SCD 24

SCHEMATIC	CONNECTIONS		
	Primary Volts	Connect lines to	Inter-connect
	504	H1, H2, H3	1-2
	492	H1, H2, H3	2-3
	480	H1, H2, H3	3-4
	468	H1, H2, H3	4-5
	456	H1, H2, H3	5-6
	444	H1, H2, H3	6-7
	432	H1, H2, H3	7-8
	Secondary Volts	Connect lines to	Inter-connect
	240	X1, X2, X3	-
	120	X1, X6 X3, X6	- -

SCD 25

SCHEMATIC	CONNECTIONS		
	Primary Volts	Connect lines to	Inter-connect
	208 230 240	X1, X2, X3	1-X1, 1-X2, 1-X3
	198 218 228	X1, X2, X3	2-X1, 2-X2, 2-X3
	188 207 216	X1, X2, X3	3-X1, 3-X2, 3-X3
	Secondary Volts	Connect lines to	
	230 260 460 480	H1, H2, H3	
	133 139 265 277	H1, H0 H2, H0 H3, H0	

SCD 26

SCHEMATIC	CONNECTIONS		
	Primary Volts	Connect lines to	Inter-connect
	208 240	X1, X2, X3	1-2
	198 228	X1, X2, X3	2-3
	188 216	X1, X2, X3	3-4
	Secondary Volts	Connect lines to	
	230 260 460 480	H1, H2, H3	
	133 139 265 277	H1, H0 H2, H0 H3, H0	

SCD 27

SCHEMATIC	CONNECTIONS		
	Primary Volts	Connect lines to	Inter-connect
	218	X1, X2, X3	1-X1, 1-X2, 1-X3
	213	X1, X2, X3	2-X1, 2-X2, 2-X3
	208	X1, X2, X3	3-X1, 3-X2, 3-X3
	203	X1, X2, X3	4-X1, 4-X2, 4-X3
	198	X1, X2, X3	5-X1, 5-X2, 5-X3
	193	X1, X2, X3	6-X1, 6-X2, 6-X3
	188	X1, X2, X3	7-X1, 7-X2, 7-X3
	Secondary Volts	Connect lines to	
	208 230 240 480	H1, H2, H3	
	120 133 133 277	H1, H0 H2, H0 H3, H0	

GENERAL INFORMATION



GENERAL INFORMATION

ELECTRICAL SCHEMATICS AND CONNECTION DIAGRAMS

SCD 28

SCHEMATIC	CONNECTIONS		
	Primary Volts	Connect lines to	Inter-connect
	218	X1, X2, X3	1-2
	213	X1, X2, X3	2-3
	208	X1, X2, X3	3-4
	203	X1, X2, X3	4-5
	198	X1, X2, X3	5-6
	193	X1, X2, X3	6-7
	188	X1, X2, X3	7-8
	Secondary Volts	Connect lines to	
	208 240 480	H1, H2, H3	
	120 133 277	H1, H0 H2, H0 H3, H0	

SCD 29

SCHEMATIC	CONNECTIONS		
	Primary Volts	Connect lines to	Inter-connect
	504	H1, H2, H3	1-H1, 1-H2, 1-H3
	492	H1, H2, H3	2-H1, 2-H2, 2-H3
	480	H1, H2, H3	3-H1, 3-H2, 3-H3
	468	H1, H2, H3	4-H1, 4-H2, 4-H3
	456	H1, H2, H3	5-H1, 5-H2, 5-H3
	444	H1, H2, H3	6-H1, 6-H2, 6-H3
	432	H1, H2, H3	7-H1, 7-H2, 7-H3
		Secondary Volts	Connect lines to
	240	X1, X2, X3	-

SCD 30

SCHEMATIC	CONNECTIONS		
	Primary Volts	Connect lines to	Inter-connect
	504	H1, H2, H3	1-2
	492	H1, H2, H3	2-3
	480	H1, H2, H3	3-4
	468	H1, H2, H3	4-5
	456	H1, H2, H3	5-6
	444	H1, H2, H3	6-7
	432	H1, H2, H3	7-8
		Secondary Volts	Connect lines to
	240	X1, X2, X3	-

SCD 31

SCHEMATIC	CONNECTIONS		
	Connect to	Step Down	Step Up
	Lines from Supply	H1, H2, H3	X1, X2, X3
	Lines to Load Neutral	X1, X2, X3 X0	H1, H2, H3 H0

GENERAL INFORMATION

GENERAL INFORMATION

ELECTRICAL SCHEMATICS AND CONNECTION DIAGRAMS

SCD 32

SCHEMATIC		CONNECTIONS		
	Primary Volts	Connect lines to	Inter-connect	
	208 240 416 480 600	H1, H2, H3	1	
	198 228 395 456 570	H1, H2, H3	2	
187 216 374 432 540	H1, H2, H3	3		
	Secondary Volts	Connect lines to		
208 230 240 380 416 460 480 600		X1, X2, X3		
120 133 139 220 240 265 277 347		X1, X0 X2, X0 X3, X0		

SCD 33

SCHEMATIC		CONNECTIONS		
	Primary Volts	Connect lines to	Inter-connect	
	208 240 416 480 600	H1, H2, H3	1-2	
	198 228 395 456 570	H1, H2, H3	2-3	
187 216 374 432 540	H1, H2, H3	3-4		
	Secondary Volts	Connect lines to		
208 380 416 480 600		X1, X2, X3		
120 220 240 277 347		X1, X0 X2, X0 X3, X0		

SCD 34

SCHEMATIC		CONNECTIONS		
	Primary Volts	Connect lines to	Inter-connect	
	218 252	H1, H2, H3	1	
	213 246	H1, H2, H3	2	
208 240	H1, H2, H3	3		
203 234	H1, H2, H3	4		
198 228	H1, H2, H3	5		
	Secondary Volts	Connect lines to		
460 480 600		X1, X2, X3		
265 277 347		X1, X0 X2, X0 X3, X0		

SCD 35

SCHEMATIC		CONNECTIONS		
	Primary Volts	Connect lines to	Inter-connect	
	218 252	H1, H2, H3	1-2	
	213 246	H1, H2, H3	2-3	
208 240	H1, H2, H3	3-4		
203 234	H1, H2, H3	4-5		
198 228	H1, H2, H3	5-6		
	Secondary Volts	Connect lines to		
460 480 600		X1, X2, X3		
265 277 347		X1, X0 X2, X0 X3, X0		



GENERAL INFORMATION

ELECTRICAL SCHEMATICS AND CONNECTION DIAGRAMS

SCD 36

SCHEMATIC		CONNECTIONS		
		Primary Volts	Connect lines to	Inter-connect
		218 252 208 240 198 228	X1, X2, X3 X1, X2, X3 X1, X2, X3	1-X1, 1-X2, 1-X3 2-X1, 2-X2, 2-X3 3-X1, 3-X2, 3-X3
		Secondary Volts	Connect lines to	Inter-connect
		480	H1, H2, H3	-
		277	H1, H0 H2, H0 H3, H0	- - -

SCD 37

SCHEMATIC		CONNECTIONS		
		Primary Volts	Connect lines to	Inter-connect
		218 252 208 240 198 228	X1, X2, X3 X1, X2, X3 X1, X2, X3	1-2 2-3 3-4
		Secondary Volts	Connect lines to	Inter-connect
		480	H1, H2, H3	-
		277	H1, H0 H2, H0 H3, H0	- - -

SCD 38

SCHEMATIC		CONNECTIONS		
		Connect to	Step Down	Step Up
		Lines from Supply	H1, H2, H3	X1, X2, X3
		Lines to Load	X1, X2, X3	H1, H2, H3
		Neutral	X0	H0

SCD 39

SCHEMATIC		CONNECTIONS		
		Primary Volts	Connect lines to	Inter-connect
		120	H1, H2	---
		Secondary Volts	Connect lines to	Inter-connect
		120	X1, X2	---

GENERAL INFORMATION



GENERAL INFORMATION

SCD 40

SCHEMATIC	CONNECTIONS		
	Primary Volts	Connect lines to	Inter-connect
	208	H1, H2	---
	Secondary Volts	Connect lines to	Inter-connect
	120	X1, X2	---

SCD 41

SCHEMATIC	CONNECTIONS		
	Primary Volts	Connect lines to	Inter-connect
	240	H1, H2	---
	Secondary Volts	Connect lines to	Inter-connect
	120	X1, X2	---

SCD 42

SCHEMATIC	CONNECTIONS		
	Primary Volts	Connect lines to	Inter-connect
	630	H1, H2, H3	1-2
	600	H1, H2, H3	2-3
	570	H1, H2, H3	3-4
	Secondary Volts	Connect lines to	Inter-connect
240	X1, X2, X3	---	

SCD 43

SCHEMATIC	CONNECTIONS		
	Primary Volts	Connect lines to	Inter-connect
	480	H1, H2	---
	Secondary Volts	Connect lines to	Inter-connect
	120	X1, X2	---

SCD 44

SCHEMATIC	CONNECTIONS		
	Primary Volts	Connect lines to	Inter-connect
	600	H1, H2	---
	Secondary Volts	Connect lines to	Inter-connect
	120	X1, X2	---

GENERAL
INFORMATION



GENERAL INFORMATION

SCD 45

SCHEMATIC		CONNECTIONS		
		Primary Volts	Connect lines to	Inter-connect
		440	H1, H10	H5-H6
		416	H1, H9	H4-H6
		400	H1, H8	H3-H6
		380	H1, H7	H2-H6
		220	H1, H10	H1-H6, H5-H10
		208	H1, H9	H1-H6, H4-H9
		200	H1, H8	H1-H6, H3-H8
		120	H1, H7	H1-H6, H2-H7
		Secondary Volts	Connect lines to	Inter-connect
		240	X1, X4	X2-X3
		120/240	X1, X2, X4	X2-X3
		120	X1, X4	X2-X4, X1-X3

SCD 46

SCHEMATIC		CONNECTIONS		
		Primary Volts	Connect lines to	Inter-connect
		440	H1, H4	1-H2, 2-H3, H2-H3
		416	H1, H4	3-H2, 4-H3, H2-H3
		400	H1, H4	5-H2, 6-H3, H2-H3
		380	H1, H4	7-H2, 8-H3, H2-H3
		220	H1, H4	1-H2, 2-H3, H1-H3, H2-H4
		208	H1, H4	3-H2, 4-H3, H1-H3, H2-H4
		200	H1, H4	5-H2, 6-H3, H1-H3, H2-H4
		190	H1, H4	7-H2, 8-H3, H1-H3, H2-H4
		Secondary Volts	Connect lines to	Inter-connect
		240	X1, X4	X2- X3
		120	X1, X2	X1-X3, X2-X4
		120/240	X1, X2, X4	X2-X3

SCD 47

SCHEMATIC		CONNECTIONS		
		Primary Volts	Connect lines to	Inter-connect
		630 504	H1, H2, H3	1-2
		615 492	H1, H2, H3	2-3
		600 480	H1, H2, H3	3-4
		585 468	H1, H2, H3	4-5
		570 456	H1, H2, H3	5-6
		Secondary Volts	Connect lines to	Inter-connect
		240	X1, X2, X3	

GENERAL INFORMATION



GENERAL INFORMATION

TERMINATION DETAILS - For NEMA 1 Style Transformers

Includes: Autotransformers (Section 13) and Medium Voltage Transformers (Section 14).

SINGLE PHASE TERMINATION - AWG(MCM) OR PADS

kVA	VOLTAGE						
	120/240	277	416	480	600	2400	4160
0.25	Leads	Leads	Leads	Leads	Leads	-	-
0.5	Leads	Leads	Leads	Leads	Leads	-	-
0.75	Leads	Leads	Leads	Leads	Leads	-	-
1	Leads	Leads	Leads	Leads	Leads	-	-
1.5	Leads	Leads	Leads	Leads	Leads	-	-
2	Leads	Leads	Leads	Leads	Leads	-	-
3	Leads	Leads	Leads	Leads	Leads	-	-
5	Leads	Leads	Leads	Leads	Leads	-	-
7.5	#6-#14	#6-#14	#6-#14	#6-#14	#6-#14	-	-
10	#4-#14	#6-#14	#6-#14	#6-#14	#6-#14	-	-
15	#2-#14	#2-#14	#4-#14	#4-#14	#4-#14	#6-#14	#6-#14
25	#2/0-#6	#2/0-#6	#2-#14	#2-#14	#2-#14	#6-#14	#6-#14
37.5	#250-#6	#250-#6	#2/0-#6	#2/0-#6	#2-#14	#6-#14	#6-#14
50	#600-#2	#350-#6	#250-#6	#2/0-#6	#2/0-#6	#6-#14	#6-#14
75	2X#350-#4	#600-#2	#350-#6	#250-#6	#250-#6	#6-#14	#6-#14
100	Diagram 1D	Diagram 1D	#600-#2	#600-#2	#350-#6	#2-#14	#6-#14
150	Diagram 2	Diagram 1D	Diagram 1D	2X#350-#4	#600-#2	#2-#14	#2-#14
167	Diagram 2	Diagram 2	Diagram 1D	Diagram 1D	2X#350-#6	#2-#14	#2-#14
250	Diagram 2	Diagram 2	Diagram 2	Diagram 1D	Diagram 1D	#2/0-#6	#2-#14
333	Diagram 2	Diagram 2	Diagram 2	Diagram 2	Diagram 2	#250-#6	#2/0-#6

THREE PHASE TERMINATION - AWG(MCM) OR PADS

kVA	VOLTAGE								
	208	230	240	380	416	480	600	2400	4160
2	Leads	Leads	Leads	Leads	Leads	Leads	Leads	-	-
3	Leads	Leads	Leads	Leads	Leads	Leads	Leads	-	-
6	Leads	Leads	Leads	Leads	Leads	Leads	Leads	-	-
9	#6-#14	#6-#14	#6-#14	#6-#14	#6-#14	#6-#14	#6-#14	-	-
15	#4-#14	#6-#14	#6-#14	#6-#14	#6-#14	#6-#14	#6-#14	#6-#14	#6-#14
30	#2/0-#6	#2/0-#14	#2/0-#14	#2-#14	#4-#14	#4-#14	#4-#14	#6-#14	#6-#14
45	#250-#6	#250-#6	#250-#6	#2-#14	#2-#14	#2-#14	#4-#14	#6-#14	#6-#14
75	#600-#2	#350-#4	#350-#4	#250-#6	#2/0-#6	#2/0-#6	#2/0-#6	#6-#14	#6-#14
112.5	2X#350-#4	#600-#2	#600-#2	#350-#4	#250-#6	#250-#6	#2/0-#6	#6-#14	#6-#14
150	Diagram 1D	Diagram 1D	Diagram 1D	#600-#2	#600-#2	#350-#4	#250-#6	#6-#14	#6-#14
225	Diagram 2	Diagram 2	Diagram 1D	Diagram 1D	2X#350-#4	#600-#2	#600-#2	#2-#14	#6-#14
300	Diagram 2	Diagram 2	Diagram 2	Diagram 1D	Diagram 1D	Diagram 1D	2X#350-#4	#2/0-#6	#2-#14
500	Diagram 2	Diagram 2	Diagram 2	Diagram 2	Diagram 2	Diagram 2	Diagram 1D	#250-#6	#2-#14
600	Diagram 2	Diagram 2	Diagram 2	Diagram 2	Diagram 2	Diagram 2	Diagram 2	#250-#6	#2/0-#6
750	Diagram 2	Diagram 2	Diagram 2	Diagram 2	Diagram 2	Diagram 2	Diagram 2	#350-#4	#2/0-#6

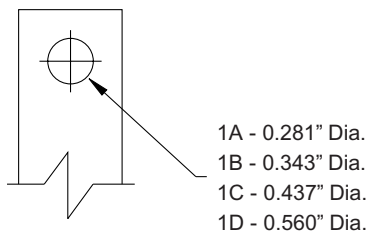


DIAGRAM 1

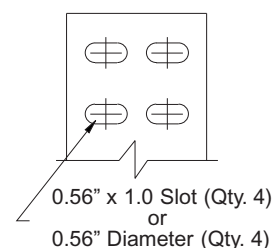


DIAGRAM 2

GENERAL INFORMATION



GENERAL INFORMATION

TERMINATION DETAILS - NEMA 3R, ALUMINUM WOUND

Including: Drive Isolation (Section 4), General Purpose Distribution (Section 8), K-Factor (Section 9), Energy Efficient (Section 10) and Low Temperature Rise (Section 11).

SINGLE PHASE, ALUMINUM TERMINATION - AWG(MCM) OR PADS

kVA	VOLTAGE						
	120/240	277	416	480	600	2400	4160
0.25	Leads	Leads	Leads	Leads	Leads	-	-
0.5	Leads	Leads	Leads	Leads	Leads	-	-
0.75	Leads	Leads	Leads	Leads	Leads	-	-
1	Leads	Leads	Leads	Leads	Leads	-	-
1.5	Leads	Leads	Leads	Leads	Leads	-	-
2	Leads	Leads	Leads	Leads	Leads	-	-
3	Leads	Leads	Leads	Leads	Leads	-	-
5	Leads	Leads	Leads	Leads	Leads	-	-
7.5	#4-#14	#4-#14	#4-#14	#4-#14	#4-#14	#6-#14	#6-#14
10	#4-#14	#4-#14	#4-#14	#4-#14	#4-#14	#6-#14	#6-#14
15	Diagram 1A	#2-#14	#4-#14	#4-#14	#4-#14	#6-#14	#6-#14
25	Diagram 1A	#2/0-#6	#2-#14	#2-#14	#2-#14	#6-#14	#6-#14
37.5	Diagram 1B	#250-#6	#2/0-#6	#2/0-#6	#2-#14	#6-#14	#6-#14
50	Diagram 1C	Diagram 1C	#250-#6	#2/0-#6	#2/0-#6	#6-#14	#6-#14
75	Diagram 1D	Diagram 1C	Diagram 1C	#250-#6	#250-#6	#6-#14	#6-#14
100	Diagram 1D	Diagram 1D	Diagram 1C	Diagram 1C	Diagram 1C	Diagram 1A	Diagram 1A
150	Diagram 2	Diagram 1D	Diagram 1D	Diagram 1D	Diagram 1C	Diagram 1A	Diagram 1A
167	Diagram 2	Diagram 2	Diagram 1D	Diagram 1D	Diagram 1D	Diagram 1A	Diagram 1A
250	Diagram 2	Diagram 2	Diagram 2	Diagram 1D	Diagram 1D	Diagram 1A	Diagram 1A
333	Diagram 2	Diagram 2	Diagram 2	Diagram 2	Diagram 2	Diagram 1B	Diagram 1A

THREE PHASE, ALUMINUM TERMINATION - AWG(MCM) OR PADS

kVA	VOLTAGE							
	208	230	380	416	480	600	2400	4160
2	Leads	Leads	Leads	Leads	Leads	Leads	-	-
3	Leads	Leads	Leads	Leads	Leads	Leads	-	-
6	Leads	Leads	Leads	Leads	Leads	Leads	-	-
9	#4-#14	#4-#14	#6-#14	#6-#14	#6-#14	#6-#14	#6-#14	#6-#14
15	#4-#14	#4-#14	#6-#14	#6-#14	#6-#14	#6-#14	#6-#14	#6-#14
30	#2/0-#6	#2-#14	#2-#14	#4-#14	#4-#14	#4-#14	#6-#14	#6-#14
45	#250-#6	#250-#6	#2-#14	#2-#14	#2-#14	#4-#14	#6-#14	#6-#14
75	Diagram 1C	Diagram 1C	#2/0-#6	#2/0-#6	#2/0-#6	#2/0-#14	#6-#14	#6-#14
112.5	Diagram 1D	Diagram 1D	Diagram 1C	#250-#6	#250-#6	#250-#6	#6-#14	#6-#14
150	Diagram 1D	Diagram 1D	Diagram 1C	Diagram 1C	Diagram 1C	#250-#6	#6-#14	#6-#14
225	Diagram 2	Diagram 2	Diagram 1D	Diagram 1D	Diagram 1C	Diagram 1C	#2-#14	#2-#14
300	Diagram 2	Diagram 2	Diagram 1D	Diagram 1D	Diagram 1D	Diagram 1D	#2/0-#6	#2-#14
500	Diagram 2	Diagram 2	Diagram 2	Diagram 2	Diagram 2	Diagram 1D	#2/0-#6	#2-#14
600	Diagram 2	Diagram 2	Diagram 2	Diagram 2	Diagram 2	Diagram 2	#250-#6	#2/0-#6
750	Diagram 2	Diagram 2	Diagram 2	Diagram 2	Diagram 2	Diagram 2	Diagram 1C	#2/0-#6

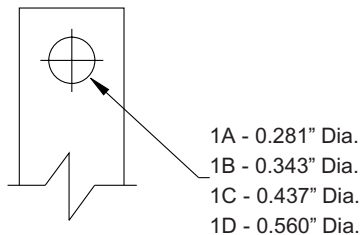


DIAGRAM 1

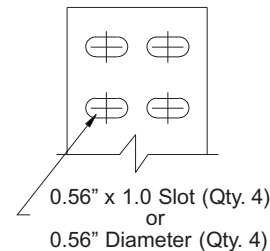


DIAGRAM 2

GENERAL
INFORMATION



GENERAL INFORMATION

TERMINATION DETAILS - NEMA 3R, COPPER WOUND

Including: Drive Isolation (Section 4), General Purpose Distribution (Section 8), K-Factor (Section 9), Energy Efficient (Section 10), Low Temperature Rise (Section 11) and Encapsulated (Section 12).

SINGLE PHASE, COPPER TERMINATION - AWG(MCM) OR PADS

kVA	VOLTAGE						
	120/240	277	416	480	600	2400	4160
0.25	Leads	Leads	Leads	Leads	Leads	-	-
0.5	Leads	Leads	Leads	Leads	Leads	-	-
0.75	Leads	Leads	Leads	Leads	Leads	-	-
1	Leads	Leads	Leads	Leads	Leads	-	-
1.5	Leads	Leads	Leads	Leads	Leads	-	-
2	Leads	Leads	Leads	Leads	Leads	-	-
3	Leads	Leads	Leads	Leads	Leads	-	-
5	Leads	Leads	Leads	Leads	Leads	-	-
7.5	Diagram 1A	#4-#14	#4-#14	#4-#14	#4-#14	Diagram 1A	Diagram 1A
10	Diagram 1A	#4-#14	#4-#14	#4-#14	#4-#14	Diagram 1A	Diagram 1A
15	Diagram 1A	Diagram 1A	#4-#14	#4-#14	#4-#14	Diagram 1A	Diagram 1A
25	Diagram 1A	Diagram 1A	Diagram 1A	Diagram 1A	Diagram 1A	Diagram 1A	Diagram 1A
37.5	Diagram 1B	Diagram 1B	Diagram 1A	Diagram 1A	Diagram 1A	Diagram 1A	Diagram 1A
50	Diagram 1C	Diagram 1C	Diagram 1B	Diagram 1A	Diagram 1A	Diagram 1A	Diagram 1A
75	Diagram 1D	Diagram 1C	Diagram 1C	Diagram 1B	Diagram 1B	Diagram 1A	Diagram 1A
100	Diagram 1D	Diagram 1D	Diagram 1C	Diagram 1C	Diagram 1C	Diagram 1A	Diagram 1A
150	Diagram 2	Diagram 1D	Diagram 1D	Diagram 1D	Diagram 1C	Diagram 1A	Diagram 1A
167	Diagram 2	Diagram 2	Diagram 1D	Diagram 1D	Diagram 1D	Diagram 1A	Diagram 1A
250	Diagram 2	Diagram 2	Diagram 2	Diagram 1D	Diagram 1D	Diagram 1A	Diagram 1A
333	Diagram 2	Diagram 2	Diagram 2	Diagram 2	Diagram 2	Diagram 1B	Diagram 1A

THREE PHASE, COPPER TERMINATION - AWG(MCM) OR PADS

kVA	VOLTAGE							
	208	230	380	416	480	600	2400	4160
2	Leads	Leads	Leads	Leads	Leads	Leads	-	-
3	Leads	Leads	Leads	Leads	Leads	Leads	-	-
6	Leads	Leads	Leads	Leads	Leads	Leads	-	-
9	#4-#14	#4-#14	#6-#14	#6-#14	#6-#14	#6-#14	Diagram 1A	Diagram 1A
15	#4-#14	#4-#14	#6-#14	#6-#14	#6-#14	#6-#14	Diagram 1A	Diagram 1A
30	Diagram 1A	Diagram 1A	Diagram 1A	Diagram 1A	Diagram 1A	Diagram 1A	Diagram 1A	Diagram 1A
45	Diagram 1B	Diagram 1B	Diagram 1A	Diagram 1A	Diagram 1A	Diagram 1A	Diagram 1A	Diagram 1A
75	Diagram 1C	Diagram 1C	Diagram 1A	Diagram 1A	Diagram 1A	Diagram 1A	Diagram 1A	Diagram 1A
112.5	Diagram 1D	Diagram 1D	Diagram 1C	Diagram 1B	Diagram 1B	Diagram 1B	Diagram 1A	Diagram 1A
150	Diagram 1D	Diagram 1D	Diagram 1C	Diagram 1C	Diagram 1C	Diagram 1B	Diagram 1A	Diagram 1A
225	Diagram 2	Diagram 2	Diagram 1D	Diagram 1D	Diagram 1C	Diagram 1C	Diagram 1A	Diagram 1A
300	Diagram 2	Diagram 2	Diagram 1D	Diagram 1D	Diagram 1D	Diagram 1D	Diagram 1A	Diagram 1A
500	Diagram 2	Diagram 2	Diagram 2	Diagram 2	Diagram 2	Diagram 1D	Diagram 1A	Diagram 1A
600	Diagram 2	Diagram 2	Diagram 2	Diagram 2	Diagram 2	Diagram 2	Diagram 1B	Diagram 1A
750	Diagram 2	Diagram 2	Diagram 2	Diagram 2	Diagram 2	Diagram 2	Diagram 1C	Diagram 1A

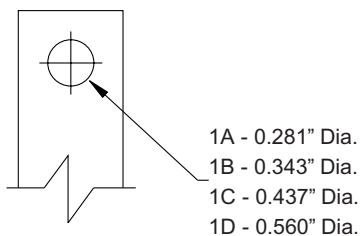


DIAGRAM 1

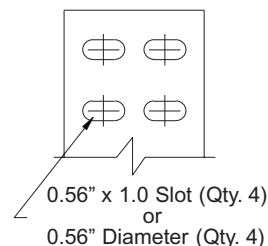


DIAGRAM 2

GENERAL INFORMATION



GENERAL INFORMATION

ACCESSORIES - GENERAL PURPOSE TRANSFORMERS

SPRINKLER HOODS

(NEMA TYPE 2 ENCLOSURE)

Sprinkler hoods can easily be field installed to protect a transformer from water falling at an angle up to 75° from vertical. A NEMA Type 1 enclosure with a properly installed sprinkler hood will meet NEMA Type 2 requirements.

Use the selection table to the right to select the appropriate sprinkler hood kit. Each kit comes with either 2 or 4 hoods, depending on the case style, to fit on transformer enclosure.

For overall dimensions of the enclosures with a sprinkler hood installed, please refer to the enclosure dimensional drawings on pages 194 thru 197.

Factory installed NEMA Type 2 enclosures are also available. Please contact the nearest Hammond Sales Office for details.

Note: UH style enclosures do not require sprinkler hood kits.

ANTI-VIBRATION PADS AND ISOLATORS

All standard transformers are supplied with installed internal vibration absorbing pads to minimize noise during operation.

Optional external “anti-vibration pads” and “vibration isolators” (for higher noise dampening) are available, and can be used to reduce operating noise even further.

Both kits are resistant to industrial contaminants like oils, acids and alkalies.

WALL MOUNTING KITS

(Used with Sprinkler Hoods)

If wall mounting is desired for a transformer fitted with sprinkler hoods, optional wall mounting brackets can be ordered separately.

Use the selection table to the right to select the appropriate kit. One kit is required for each transformer.



SPRINKLER HOOD KIT AND WALL MOUNTING BRACKET KIT PART NO.'S

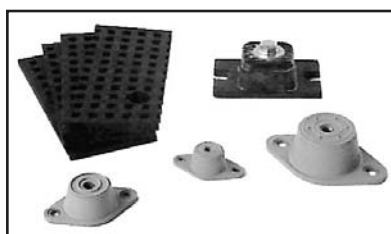
Sprinkler Hood Kit Part No.	Wall Mounting Part No.	Case Style
DHA1	WB2	A1
DHA2	WB2	A2
DHH1	WB2	H1
DHH2	WB2	H2
DHH3	N/A	H3
DHH4	N/A	H4
DHH5	WB2	H5
DHH6	WB2	H6
DHH7	N/A	H7
DHH8	N/A	H8
DHJ1	N/A	J1
DHJ2	N/A	J2
DHJ3	N/A	J3
DHJ4	N/A	J4
DHJ5	N/A	J5
DHJ6	N/A	J6
N/A	W1	UH1
N/A	W2	UH2&3
N/A	W1	UH5
N/A	W2	UH6

ANTI-VIBRATION PADS

Part No.	Case Style	Description
P1	A1 - A2	Rubber and steel washer assemblies which replace the standard steel washers
	H1 - H8	
	UH1 - UH8	
P2	J1 - J6	
	UJ1-UJ6	

VIBRATION ISOLATORS

Part No.	Transformer Weight (lb)	Description
NMP1	up to 380	Moulded neoprene and steel plate assemblies to virtually eliminate vibration noise from the transformer to the mounting surface.
NMP2	381 - 760	
NMP3	761 - 1040	
NMP4	1041 - 1880	
NMP5	1881 - 2880	
NMP6	2881 - 4880	



GENERAL INFORMATION



GENERAL INFORMATION

ALPHA NUMERIC PART NUMBER INDEX

Catalog Part No.	Catalog Page No.	Catalog Part No.	Catalog Page No.	Catalog Part No.	Catalog Page No.
2909B.2	156	3009C2	157	CV750AFP	163
2909B.4	156	3009C2.5	157	CVHW1000C	165
2909B.5	156	3009C3	157	CVHW1000D	165
2909B.75	156	3009C4	157	CVHW1000E	165
2909B1	156	3009C5	157	CVHW1500C	165
2909B1.5	156	3009C6	157	CVHW1500D	165
2909B10	156	3009C8	157	CVHW1500E	165
2909B12	156	3009D.3	157	CVHW2000C	165
2909B16	156	3009D.5	157	CVHW2000D	165
2909B2	156	3009D.75	157	CVHW2000E	165
2909B2.5	156	3009D1	157	CVHW250C	165
2909B3	156	3009D1.5	157	CVHW250D	165
2909B4	156	3009D10	157	CVHW250E	165
2909B5	156	3009D12	157	CVHW3000C	165
2909B6	156	3009D16	157	CVHW3000D	165
2909B8	156	3009D2	157	CVHW3000E	165
2909C.2	156	3009D2.5	157	CVHW5000C	165
2909C.4	156	3009D3	157	CVHW5000D	165
2909C.5	156	3009D4	157	CVHW5000E	165
2909C.75	156	3009D5	157	CVHW500C	165
2909C1	156	3009D6	157	CVHW500D	165
2909C1.5	156	3009D8	157	CVHW500E	165
2909C10	156	BKE4EA	108, 111, 114, 115, 171	CVHW750C	165
2909C12	156	BKE4FA	109, 112, 114, 116, 171	CVHW750D	165
2909C16	156	BKE6GS	110, 113, 115, 116, 172	CVHW750E	165
2909C2	156	BKG4EA	108, 111, 114, 115, 171	DM007CC	146
2909C2.5	156	BKG4FA	109, 112, 114, 116, 171	DM007CCCF	149
2909C3	156	BKG6GS	110, 113, 115, 116, 172	DM007JC	146
2909C4	156	BKH4EA	108, 111, 114, 115, 171	DM007JCCF	149
2909C5	156	BKH4FA	109, 112, 114, 116, 171	DM007JJ	147
2909C6	156	BKH6GS	110, 113, 115, 116, 172	DM007JJCF	150
2909C8	156	BKI4EA	108, 111, 114, 115, 171	DM007KD	147
2909D.2	156	BKI4FA	109, 112, 114, 116, 171	DM007KDCF	150
2909D.4	156	BKI6GS	110, 113, 115, 116, 172	DM007NJ	148
2909D.5	156	BKJ4EA	108, 111, 114, 115, 171	DM007NJCF	151
2909D.75	156	BKJ4FA	109, 112, 114, 116, 171	DM007NN	148
2909D1	156	BKJ6GS	110, 113, 115, 116, 172	DM007NNCF	151
2909D1.5	156	BKL4EA	108, 111, 114, 115, 171	DM011CC	146
2909D10	156	BKL4FA	109, 112, 114, 116, 171	DM011CCCF	149
2909D12	156	BKL6GS	110, 113, 115, 116, 172	DM011JC	146
2909D16	156	BKM4EA	108, 111, 114, 115, 171	DM011JCCF	149
2909D2	156	BKM4FA	109, 112, 114, 116, 171	DM011JJ	147
2909D2.5	156	BKM6GS	110, 113, 115, 116, 172	DM011JJCF	150
2909D3	156	BKN4EA	108, 111, 114, 115, 171	DM011KD	147
2909D4	156	BKN4FA	109, 112, 114, 116, 171	DM011KDCF	150
2909D5	156	BKN6GS	110, 113, 115, 116, 172	DM011NJ	148
2909D6	156	BKP4EA	108, 111, 114, 115, 171	DM011NJCF	151
2909D8	156	BKP4FA	109, 112, 114, 116, 171	DM011NN	148
3009B.3	157	BKP6GS	110, 113, 115, 116, 172	DM011NNCF	151
3009B.5	157	BKQ4EA	108, 111, 114, 115, 171	DM014CC	146
3009B.75	157	BKQ4FA	109, 112, 114, 116, 171	DM014CCCF	149
3009B1	157	BKQ6GS	110, 113, 115, 116, 172	DM014JC	146
3009B1.5	157	BKS4EA	108, 111, 114, 115, 171	DM014JCCF	149
3009B10	157	BKS4FA	109, 112, 114, 116, 171	DM014JJ	147
3009B12	157	BKS6GS	110, 113, 115, 116, 172	DM014JJCF	150
3009B16	157	BKU4EA	108, 111, 114, 115, 171	DM014KD	147
3009B2	157	BKU4FA	109, 112, 114, 116, 171	DM014KDCF	150
3009B2.5	157	BKU6GS	110, 113, 115, 116, 172	DM014NJ	148
3009B3	157	BKV4EA	108, 111, 114, 115, 171	DM014NJCF	151
3009B4	157	BKV4FA	109, 112, 114, 116, 171	DM014NN	148
3009B5	157	BKV6GS	110, 113, 115, 116, 172	DM014NNCF	151
3009B6	157	BKW4EA	108, 111, 114, 115, 171	DM020CC	146
3009B8	157	BKW4FA	109, 112, 114, 116, 171	DM020CCCF	149
3009C.3	157	BKW6GS	110, 113, 115, 116, 172	DM020JC	146
3009C.5	157	CV1000AFP	163	DM020JCCF	149
3009C.75	157	CV140AFP	163	DM020JJ	147
3009C1	157	CV1500AFP	163	DM020JJCF	150
3009C1.5	157	CV2000AFP	163	DM020KD	147
3009C10	157	CV250AFP	163	DM020KDCF	150
3009C12	157	CV500AFP	163	DM020NJ	148
3009C16	157	CV70AFP	163	DM020NJCF	151

GENERAL INFORMATION

GENERAL INFORMATION

ALPHA NUMERIC PART NUMBER INDEX

Catalog Part No.	Catalog Page No.	Catalog Part No.	Catalog Page No.	Catalog Part No.	Catalog Page No.
DM020NN	148	DM075NJC	151	DM275NJ	148
DM020NNCF	151	DM075NN	148	DM275NJC	151
DM027CC	146	DM075NNC	151	DM275NN	148
DM027CCCF	149	DM093CC	146	DM275NNC	151
DM027JC	146	DM093CCC	149	DM330CC	146
DM027JCCF	149	DM093JC	146	DM330CCC	149
DM027JJ	147	DM093JCC	149	DM330JC	146
DM027JJCF	150	DM093JJ	147	DM330JCC	149
DM027KD	147	DM093JJC	150	DM330JJ	147
DM027KDCF	150	DM093KD	147	DM330JJC	150
DM027NJ	148	DM093KDC	150	DM330KD	147
DM027NJCF	151	DM093NJ	148	DM330KDC	150
DM027NN	148	DM093NJC	151	DM330NJ	148
DM027NNCF	151	DM093NN	148	DM330NJC	151
DM034CC	146	DM093NNC	151	DM330NN	148
DM034CCCF	149	DM118CC	146	DM330NNC	151
DM034JC	146	DM118CCC	149	DM440CC	146
DM034JCCF	149	DM118JC	146	DM440CCC	149
DM034JJ	147	DM118JCC	149	DM440JC	146
DM034JJCF	150	DM118JJ	147	DM440JCC	149
DM034KD	147	DM118JJC	150	DM440JJ	147
DM034KDCF	150	DM118KD	147	DM440JJC	150
DM034NJ	148	DM118KDC	150	DM440KD	147
DM034NJCF	151	DM118NJ	148	DM440KDC	150
DM034NN	148	DM118NJC	151	DM440NJ	148
DM034NNCF	151	DM118NN	148	DM440NJC	151
DM040CC	146	DM118NNC	151	DM440NN	148
DM040CCC	149	DM145CC	146	DM440NNC	151
DM040JC	146	DM145CCC	149	DM550CC	146
DM040JCC	149	DM145JC	146	DM550CCC	149
DM040JJ	147	DM145JCC	149	DM550JC	146
DM040JJC	150	DM145JJ	147	DM550JCC	149
DM040KD	147	DM145JJC	150	DM550JJ	147
DM040KDC	150	DM145KD	147	DM550JJC	150
DM040NJ	148	DM145KDC	150	DM550KD	147
DM040NJCF	151	DM145NJ	148	DM550KDC	150
DM040NN	148	DM145NJC	151	DM550NJ	148
DM040NNC	151	DM145NN	148	DM550NJC	151
DM051CC	146	DM145NNC	151	DM550NN	148
DM051CCC	149	DM175CC	146	DM550NNC	151
DM051JC	146	DM175CCC	149	DM660CC	146
DM051JCC	149	DM175JC	146	DM660CCC	149
DM051JJ	147	DM175JCC	149	DM660JC	146
DM051JJC	150	DM175JJ	147	DM660JCC	149
DM051KD	147	DM175JJC	150	DM660JJ	147
DM051KDC	150	DM175KD	147	DM660JJC	150
DM051NJ	148	DM175KDC	150	DM660KD	147
DM051NJCF	151	DM175NJ	148	DM660KDC	150
DM051NN	148	DM175NJC	151	DM660NJ	148
DM051NNC	151	DM175NN	148	DM660NJC	151
DM063CC	146	DM175NNC	151	DM660NN	148
DM063CCC	149	DM220CC	146	DM660NNC	151
DM063JC	146	DM220CCC	149	EC0X5	103
DM063JCC	149	DM220JC	146	EC0X75	103
DM063JJ	147	DM220JCC	149	EC1	103
DM063JJC	150	DM220JJ	147	EC10	103
DM063KD	147	DM220JJC	150	EC12	103
DM063KDC	150	DM220KD	147	EC15	103
DM063NJ	148	DM220KDC	150	EC1X25	103
DM063NJCF	151	DM220NJ	148	EC1X6	103
DM063NN	148	DM220NJC	151	EC2	103
DM063NNC	151	DM220NN	148	EC2X5	103
DM075CC	146	DM220NNC	151	EC3	103
DM075CCC	149	DM275CC	146	EC5	103
DM075JC	146	DM275CCC	149	EC6	103
DM075JCC	149	DM275JC	146	EE2E	90
DM075JJ	147	DM275JCC	149	EE2G	91
DM075JJC	150	DM275JJ	147	EE2J	95
DM075KD	147	DM275JJC	150	EE3G	91
DM075KDC	150	DM275KD	147	EE3J	96
DM075NJ	148	DM275KDC	150	EE5AP	99

GENERAL
INFORMATION

GENERAL INFORMATION

ALPHA NUMERIC PART NUMBER INDEX

Catalog Part No.	Catalog Page No.	Catalog Part No.	Catalog Page No.	Catalog Part No.	Catalog Page No.
EE5BP	100	EI7J	97	EM5BP	100
EE5CP	101	EI9EA	95	EM5CP	101
EE5EEA	95	EI9G	93	EM5EEA	95
EE5EP	101	EI9J	98	EM5EP	101
EE5G	92	EI9M	99	EM5J	97
EE5J	97	EI9P	103	EM6P	102
EE6P	102	EJ2E	90	EM7J	97
EE7G	93	EJ2G	91	EM9EA	95
EE7J	97	EJ2J	95	EM9J	98
EE9EA	95	EJ3G	91	EM9M	99
EE9G	93	EJ3J	96	EM9P	103
EE9J	98	EJ4EA	94	EN2J	95
EE9M	99	EJ5AP	99	EN4EA	94
EE9P	103	EJ5BP	100	EN5AP	99
EG2E	90	EJ5CP	101	EN5BP	100
EG2G	91	EJ5EEA	95	EN5CP	101
EG2J	95	EJ5EP	101	EN5EEA	95
EG3G	91	EJ5G	92	EN5EP	101
EG3J	96	EJ5J	97	EN5J	97
EG4EA	94	EJ6P	102	EN6P	102
EG5AP	99	EJ7G	93	EN7J	97
EG5BP	100	EJ7J	97	EN9EA	95
EG5CP	101	EJ9EA	95	EN9J	98
EG5EEA	95	EJ9G	93	EN9M	99
EG5EP	101	EJ9J	98	EN9P	103
EG5G	92	EJ9M	99	EP2J	95
EG5J	97	EJ9P	103	EP4EA	94
EG6P	102	EK2E	90	EP5BP	100
EG7G	93	EK2G	91	EP5CP	101
EG7J	97	EK2J	95	EP5EP	101
EG9EA	95	EK3G	91	EP6P	102
EG9G	93	EK3J	96	EP9P	103
EG9J	98	EK5AP	99	EQ2J	95
EG9M	99	EK5BP	100	EQ4EA	94
EG9P	103	EK5CP	101	EQ5BP	100
EH2E	90	EK5EEA	95	EQ5CP	101
EH2G	91	EK5EP	101	EQ5EP	101
EH2J	95	EK5G	92	EQ6P	102
EH3G	91	EK5J	97	EQ9P	103
EH3J	96	EK6P	102	ES2J	95
EH4EA	94	EK7G	93	ES4EA	94
EH5AP	99	EK7J	97	ES5BP	100
EH5BP	100	EK9EA	95	ES5CP	101
EH5CP	101	EK9G	93	ES5EP	101
EH5EEA	95	EK9J	98	ES6P	102
EH5EP	101	EK9M	99	ES9P	103
EH5G	92	EK9P	103	EU5BP	100
EH5J	97	EL2E	90	EU5CP	101
EH6P	102	EL2G	91	EU5EP	101
EH7G	93	EL2J	95	EU6P	102
EH7J	97	EL3G	91	EU9P	103
EH9EA	95	EL3J	96	EX1X5	103
EH9G	93	EL4EA	94	F002FECF	180
EH9J	98	EL5AP	99	F002HECF	181
EH9M	99	EL5BP	100	F002LECF	179
EH9P	103	EL5CP	101	F002PECF	183
EI2E	90	EL5EEA	95	F003FECF	180
EI2G	91	EL5EP	101	F003HECF	181
EI2J	95	EL5G	92	F003LECF	179
EI3G	91	EL5J	97	F003PECF	183
EI3J	96	EL6P	102	F005FECF	180
EI4EA	94	EL7G	93	F005HECF	181
EI5AP	99	EL7J	97	F005LECF	179
EI5BP	100	EL9EA	95	F005PECF	183
EI5CP	101	EL9G	93	F015RE	235
EI5EEA	95	EL9J	98	F015REC	236
EI5EP	101	EL9M	99	F015SE	235
EI5G	92	EL9P	103	F015SEC	236
EI5J	97	EM2J	95	F025RE	235
EI6P	102	EM4EA	94	F025REC	236
EI7G	93	EM5AP	99	F025SE	235

GENERAL
INFORMATION

GENERAL INFORMATION

ALPHA NUMERIC PART NUMBER INDEX

Catalog Part No.	Catalog Page No.	Catalog Part No.	Catalog Page No.	Catalog Part No.	Catalog Page No.
F025SEC	236	FC15GECB	181	K015RPC	239
F037RE	235	FC15HECB	181	K015SB	238
F037REC	236	FC15KACB	182	K015SBC	240
F037SE	235	FC15LECB	179	K015SK	238
F037SEC	236	FC15PACB	182	K015SKC	240
F050RE	235	FC15PECB	183	K015SP	238
F050REC	236	FC20AACB	177	K015SPC	240
F050SE	235	FC20B1ECB	178	K030RB	237
F050SEC	236	FC20BACB	177	K030RBC	239
F075RE	235	FC20DACB	178	K030RK	237
F075REC	236	FC20FECB	180	K030RKC	239
F075SE	235	FC20G1ECB	180	K030RP	237
F075SEC	236	FC20GECB	181	K030RPC	239
F100RE	235	FC20HECB	181	K030SB	238
F100REC	236	FC20KACB	182	K030SBC	240
F100SE	235	FC20LECB	179	K030SK	238
F100SEC	236	FC20PACB	182	K030SKC	240
F150RE	235	FC20PECB	183	K030SP	238
F150REC	236	FC25AACB	177	K030SPC	240
F150SE	235	FC25B1ECB	178	K045RB	237
F150SEC	236	FC25BACB	177	K045RBC	239
F167RE	235	FC25DACB	178	K045RK	237
F167REC	236	FC25FECB	180	K045RKC	239
F167SE	235	FC25G1ECB	180	K045RP	237
F167SEC	236	FC25GECB	181	K045RPC	239
F1C0FECE	180	FC25HECB	181	K045SB	238
F1C0HECF	181	FC25KACB	182	K045SBC	240
F1C0LECF	179	FC25LECB	179	K045SK	238
F1C0PECF	183	FC25PACB	182	K045SKC	240
F1C5FECE	180	FC25PECB	183	K045SP	238
F1C5HECF	181	FC35AACB	177	K045SPC	240
F1C5LECF	179	FC35B1ECB	178	K075RB	237
F1C5PECF	183	FC35BAECB	177	K075RBC	239
F250RE	235	FC35DACB	178	K075RK	237
F250REC	236	FC35FECB	180	K075RKC	239
F250SE	235	FC35G1ECB	180	K075RP	237
F250SEC	236	FC35GECB	181	K075RPC	239
F333RE	235	FC35HECB	181	K075SB	238
F333REC	236	FC35KACB	182	K075SBC	240
F333SE	235	FC35LECB	179	K075SK	238
F333SEC	236	FC35PACB	182	K075SKC	240
FC05AACB	177	FC35PECB	183	K075SP	238
FC05B1ECB	178	FC50AACB	177	K075SPC	240
FC05BACB	177	FC50B1ECB	178	K10HPB	249
FC05DACB	178	FC50BACB	177	K10HPBAH0	248
FC05FECB	180	FC50DACB	178	K10HPK	249
FC05G1ECB	180	FC50FECB	180	K10HPKAH0	248
FC05GECB	181	FC50G1ECB	180	K10HSB	249
FC05HECB	181	FC50GECB	181	K10HSBAH0	248
FC05KACB	182	FC50HECB	181	K10HSK	249
FC05LECB	179	FC50KACB	182	K10HSKAH0	248
FC05PACB	182	FC50LECB	179	K10HWB	249
FC05PECB	183	FC50PACB	182	K10HWBAH0	248
FC10AACB	177	FC50PECB	183	K10HWK	249
FC10B1ECB	178	FC75AACB	177	K10HWKAH0	248
FC10BACB	177	FC75B1ECB	178	K112RB	237
FC10DACB	178	FC75BACB	177	K112RBC	239
FC10FECB	180	FC75DACB	178	K112RK	237
FC10G1ECB	180	FC75FECB	180	K112RKC	239
FC10GECB	181	FC75G1ECB	180	K112RP	237
FC10HECB	181	FC75GECB	181	K112RPC	239
FC10KACB	182	FC75HECB	181	K112SB	238
FC10LECB	179	FC75KACB	182	K112SBC	240
FC10PACB	182	FC75LECB	179	K112SK	238
FC10PECB	183	FC75PACB	182	K112SKC	240
FC15AACB	177	FC75PECB	183	K112SP	238
FC15B1ECB	178	K015RB	237	K112SPC	240
FC15BACB	177	K015RBC	239	K12HSK	249
FC15DACB	178	K015RK	237	K12HSKAH0	248
FC15FECB	180	K015RKC	239	K12HWK	249
FC15G1ECB	180	K015RP	237	K12HWKAH0	248

GENERAL INFORMATION

GENERAL INFORMATION

ALPHA NUMERIC PART NUMBER INDEX

Catalog Part No.	Catalog Page No.	Catalog Part No.	Catalog Page No.	Catalog Part No.	Catalog Page No.
K12HZK.....	249	K500SKC.....	240	KD3.....	229
K12HZKAH0.....	248	K500SP.....	238	KD30.....	229
K150RB.....	237	K500SPC.....	240	KD300.....	229
K150RBC.....	239	K600RB.....	237	KD45.....	229
K150RK.....	237	K600RBC.....	239	KD6.....	229
K150RKCC.....	239	K600RK.....	237	KD75.....	229
K150RP.....	237	K600RKC.....	239	KD9.....	229
K150RPC.....	239	K600RP.....	237	KF112.....	231
K150SB.....	238	K600RPC.....	239	KF15.....	231
K150SBC.....	240	K600RSB.....	238	KF150.....	231
K150SK.....	238	K600SBC.....	240	KF225.....	231
K150SKC.....	240	K600SK.....	238	KF3.....	231
K150SP.....	238	K600SKC.....	240	KF30.....	231
K150SPC.....	240	K600SP.....	238	KF45.....	231
K15HSK.....	249	K600SPC.....	240	KF6.....	231
K15HSKAH0.....	248	K750PK.....	249	KF75.....	231
K15HWK.....	249	K750PKAH0.....	248	KF9.....	231
K15HWKAH0.....	248	K750RB.....	237	KG112.....	230
K15HZK.....	249	K750RBC.....	239	KG15.....	230
K15HZKAH0.....	248	K750RK.....	237	KG150.....	230
K20HSK.....	249	K750RKCC.....	239	KG225.....	230
K20HSKAH0.....	248	K750RP.....	237	KG3.....	230
K20HWK.....	249	K750RPC.....	239	KG30.....	230
K20HWKAH0.....	248	K750RSB.....	238	KG45.....	230
K20HZK.....	249	K750SBC.....	240	KG6.....	230
K20HZKAH0.....	248	K750SK.....	238	KG75.....	230
K225RB.....	237	K750SKC.....	249	KG9.....	230
K225RBC.....	239	K750SKAH0.....	248	KH112.....	231
K225RK.....	237	K750SKC.....	240	KH15.....	231
K225RKCC.....	239	K750SP.....	238	KH150.....	231
K225RP.....	237	K750SPC.....	240	KH225.....	231
K225RPC.....	239	K750WB.....	249	KH3.....	231
K225SB.....	238	K750WBAH0.....	248	KH30.....	231
K225SBC.....	240	K750WK.....	249	KH45.....	231
K225SK.....	238	K750WKAH0.....	248	KH6.....	231
K225SKC.....	240	KA112.....	229	KH75.....	231
K225SP.....	238	KA15.....	229	KH9.....	231
K225SPC.....	240	KA150.....	229	KR112.....	231
K25HSK.....	249	KA225.....	229	KR15.....	231
K25HSKAH0.....	248	KA3.....	229	KR150.....	231
K25HWK.....	249	KA30.....	229	KR225.....	231
K25HWKAH0.....	248	KA300.....	229	KR3.....	231
K25HZK.....	249	KA45.....	229	KR30.....	231
K25HZKAH0.....	248	KA500.....	229	KR300.....	231
K300RB.....	237	KA6.....	229	KR45.....	231
K300RBC.....	239	KA75.....	229	KR500.....	231
K300RK.....	237	KA9.....	229	KR6.....	231
K300RKCC.....	239	KB112.....	230	KR75.....	231
K300RP.....	237	KB15.....	230	KR9.....	231
K300RPC.....	239	KB150.....	230	MF015BE.....	175
K300SB.....	238	KB225.....	230	MF015BEC.....	177
K300SBC.....	240	KB3.....	230	MF015FE.....	175
K300SK.....	238	KB30.....	230	MF015FEC.....	180
K300SKC.....	240	KB45.....	230	MF015HE.....	176
K300SP.....	238	KB6.....	230	MF015HEC.....	181
K300SPC.....	240	KB75.....	230	MF015LE.....	175
K30HSK.....	249	KB9.....	230	MF015LEAB.....	211
K30HSKAH0.....	248	KC112.....	230	MF015LEAF.....	211
K30HWK.....	249	KC15.....	230	MF015LEC.....	179
K30HWKAH0.....	248	KC150.....	230	MF015LECB.....	212
K30HZK.....	249	KC225.....	230	MF015LECF.....	212
K30HZKAH0.....	248	KC3.....	230	MF015PE.....	176
K500RB.....	237	KC30.....	230	MF015PEAB.....	211
K500RBC.....	239	KC45.....	230	MF015PEAF.....	211
K500RK.....	237	KC6.....	230	MF015PEC.....	183
K500RKCC.....	239	KC75.....	230	MF015PECB.....	212
K500RP.....	237	KC9.....	230	MF015PECF.....	212
K500RPC.....	239	KD112.....	229	MF015XE.....	176
K500SB.....	238	KD15.....	229	MF015XEC.....	183
K500SBC.....	240	KD150.....	229	MF025BE.....	175
K500SK.....	238	KD225.....	229	MF025BEC.....	177

GENERAL
INFORMATION

GENERAL INFORMATION

ALPHA NUMERIC PART NUMBER INDEX

Catalog Part No.	Catalog Page No.	Catalog Part No.	Catalog Page No.	Catalog Part No.	Catalog Page No.
MF025FE	175	MF075PEAB	211	MK009KB	186
MF025FEC	180	MF075PEAF	211	MK009KBCF	190
MF025HE	176	MF075PEC	183	MK009KD	186
MF025HEC	181	MF075PECB	212	MK009KDCF	190
MF025LE	175	MF075PECF	212	MK009KK	187
MF025LEAB	211	MF075XE	176	MK009KKCF	191
MF025LEAF	211	MF075XEC	183	MK009PB	187
MF025LEC	179	MF100BE	175	MK009PBCF	191
MF025LECB	212	MF100BEC	177	MK009PD	188
MF025LECF	212	MF100FE	175	MK009PDCF	192
MF025PE	176	MF100FEC	180	MK009PK	188
MF025PEAB	211	MF100HE	176	MK009PKCF	192
MF025PEAF	211	MF100HEC	181	MK015BB	185
MF025PEC	183	MF100LE	175	MK015BBCF	189
MF025PECB	212	MF100LEAB	211	MK015BK	185
MF025PECF	212	MF100LEAF	211	MK015BKCF	189
MF025XE	176	MF100LEC	179	MK015DB	185
MF025XEC	183	MF100LECB	212	MK015DBCF	189
MF037BE	175	MF100LECF	212	MK015DK	186
MF037BEC	177	MF100PE	176	MK015DKCF	190
MF037FE	175	MF100PEAB	211	MK015KB	186
MF037FEC	180	MF100PEAF	211	MK015KBAB	213
MF037HE	176	MF100PEC	183	MK015KBAF	214
MF037HEC	181	MF100PECB	212	MK015KBCB	215
MF037LE	175	MF100PECF	212	MK015KBCF	190
MF037LEAB	211	MF100XE	176	MK015KBCF	216
MF037LEAF	211	MF100XEC	183	MK015KD	186
MF037LEC	179	MF150BE	175	MK015KDAB	213
MF037LECB	212	MF150BEC	177	MK015KDAF	214
MF037LECF	212	MF150FE	175	MK015KDCB	215
MF037PE	176	MF150FEC	180	MK015KDCF	190
MF037PEAB	211	MF150HE	176	MK015KDCF	216
MF037PEAF	211	MF150HEC	181	MK015KK	187
MF037PEC	183	MF150LE	175	MK015KKCF	191
MF037PECB	212	MF150LEAB	211	MK015PB	187
MF037PECF	212	MF150LEAF	211	MK015PBAB	213
MF037XE	176	MF150LEC	179	MK015PBAF	214
MF037XEC	183	MF150LECB	212	MK015PBCB	215
MF050BE	175	MF150LECF	212	MK015PBCF	191
MF050BEC	177	MF150PE	176	MK015PBCF	216
MF050FE	175	MF150PEAB	211	MK015PD	188
MF050FEC	180	MF150PEAF	211	MK015PDCF	192
MF050HE	176	MF150PEC	183	MK015PK	188
MF050HEC	181	MF150PECB	212	MK015PKCF	192
MF050LE	175	MF150PECF	212	MK030BB	185
MF050LEAB	211	MF150XE	176	MK030BBC	189
MF050LEAF	211	MF150XEC	183	MK030BK	185
MF050LEC	179	MF167BE	175	MK030BKC	189
MF050LECB	212	MF167BEC	177	MK030DB	185
MF050LECF	212	MF167FE	175	MK030DBC	189
MF050PE	176	MF167FEC	180	MK030DK	186
MF050PEAB	211	MF167HE	176	MK030DKC	190
MF050PEAF	211	MF167HEC	181	MK030KB	186
MF050PEC	183	MF167LE	175	MK030KBAB	213
MF050PECB	212	MF167LEAB	211	MK030KBAF	214
MF050PECF	212	MF167LEAF	211	MK030KBC	190
MF050XE	176	MF167LEC	179	MK030KBCB	215
MF050XEC	183	MF167LECB	212	MK030KBCF	216
MF075BE	175	MF167LECF	212	MK030KD	186
MF075BEC	177	MF167PE	176	MK030KDAB	213
MF075FE	175	MF167PEAB	211	MK030KDAF	214
MF075FEC	180	MF167PEAF	211	MK030KDC	190
MF075HE	176	MF167PEC	183	MK030KDCB	215
MF075HEC	181	MF167PECB	212	MK030KDCF	216
MF075LE	175	MF167PECF	212	MK030KK	187
MF075LEAB	211	MF167XE	176	MK030KKC	191
MF075LEAF	211	MF167XEC	183	MK030PB	187
MF075LEC	179	MK009BB	185	MK030PBAB	213
MF075LECB	212	MK009BBCF	189	MK030PBAF	214
MF075LECF	212	MK009DB	185	MK030PBC	191
MF075PE	176	MK009DBC	189	MK030PBCB	215

GENERAL
INFORMATION

GENERAL INFORMATION

ALPHA NUMERIC PART NUMBER INDEX

Catalog Part No.	Catalog Page No.	Catalog Part No.	Catalog Page No.	Catalog Part No.	Catalog Page No.
MK030PBCF	216	MK112BK	185	MK225KBAB	213
MK030PD	188	MK112BKC	189	MK225KBAF	214
MK030PDC	192	MK112DB	185	MK225KBC	190
MK030PK	188	MK112DBC	189	MK225KBCB	215
MK030PKC	192	MK112DK	186	MK225KBCF	216
MK045BB	185	MK112DKC	190	MK225KD	186
MK045BBC	189	MK112KB	186	MK225KDAB	213
MK045BK	185	MK112KBAB	213	MK225KDAF	214
MK045BKC	189	MK112KBAF	214	MK225KDC	190
MK045DB	185	MK112KBC	190	MK225KDCB	215
MK045DBC	189	MK112KBCB	215	MK225KDCF	216
MK045DK	186	MK112KBCF	216	MK225KK	187
MK045DKC	190	MK112KD	186	MK225KKC	191
MK045KB	186	MK112KDAB	213	MK225PB	187
MK045KBAB	213	MK112KDAF	214	MK225PBAB	213
MK045KBAF	214	MK112KDC	190	MK225PBAF	214
MK045KBC	190	MK112KDCB	215	MK225PBC	191
MK045KBCB	215	MK112KDCF	216	MK225PBCB	215
MK045KBCF	216	MK112KK	187	MK225PBCF	216
MK045KD	186	MK112KCC	191	MK225PD	188
MK045KDAB	213	MK112PB	187	MK225PDC	192
MK045KDAF	214	MK112PBAB	213	MK225PK	188
MK045KDC	190	MK112PBAF	214	MK225PKC	192
MK045KDCB	215	MK112PBC	191	MK300BB	185
MK045KDCF	216	MK112PBCB	215	MK300BBC	189
MK045KK	187	MK112PBCF	216	MK300BK	185
MK045KKC	191	MK112PD	188	MK300BKC	189
MK045PB	187	MK112PDC	192	MK300DB	185
MK045PBAB	213	MK112PK	188	MK300DBC	189
MK045PBAF	214	MK112PKC	192	MK300DK	186
MK045PBC	191	MK150BB	185	MK300DKC	190
MK045PBCB	215	MK150BBC	189	MK300KB	186
MK045PBCF	216	MK150BK	185	MK300KBAB	213
MK045PD	188	MK150BKC	189	MK300KBAF	214
MK045PDC	192	MK150DB	185	MK300KBC	190
MK045PK	188	MK150DBC	189	MK300KBCB	215
MK045PKC	192	MK150DK	186	MK300KBCF	216
MK075BB	185	MK150DKC	190	MK300KD	186
MK075BBC	189	MK150KB	186	MK300KDAB	213
MK075BK	185	MK150KBAB	213	MK300KDAF	214
MK075BKC	189	MK150KBAF	214	MK300KDC	190
MK075DB	185	MK150KBC	190	MK300KDCB	215
MK075DBC	189	MK150KBCB	215	MK300KDCF	216
MK075DK	186	MK150KBCF	216	MK300KK	187
MK075DKC	190	MK150KD	186	MK300KKC	191
MK075KB	186	MK150KDAB	213	MK300PB	187
MK075KBAB	213	MK150KDAF	214	MK300PBAB	213
MK075KBAF	214	MK150KDC	190	MK300PBAF	214
MK075KBC	190	MK150KDCB	215	MK300PBC	191
MK075KBCB	215	MK150KDCF	216	MK300PBCB	215
MK075KBCF	216	MK150KK	187	MK300PBCF	216
MK075KD	186	MK150KCC	191	MK300PD	188
MK075KDAB	213	MK150PB	187	MK300PDC	192
MK075KDAF	214	MK150PBAB	213	MK300PK	188
MK075KDC	190	MK150PBAF	214	MK300PKC	192
MK075KDCB	215	MK150PBC	191	MK500BB	185
MK075KDCF	216	MK150PBCB	215	MK500BBC	189
MK075KK	187	MK150PBCF	216	MK500BK	185
MK075KKC	191	MK150PD	188	MK500BKC	189
MK075PB	187	MK150PDC	192	MK500DB	185
MK075PBAB	213	MK150PK	188	MK500DBC	189
MK075PBAF	214	MK150PKC	192	MK500DK	186
MK075PBC	191	MK225BB	185	MK500DKC	190
MK075PBCB	215	MK225BBC	189	MK500KB	186
MK075PBCF	216	MK225BK	185	MK500KBAB	213
MK075PD	188	MK225BKC	189	MK500KBAF	214
MK075PDC	192	MK225DB	185	MK500KBC	190
MK075PK	188	MK225DBC	189	MK500KBCB	215
MK075PKC	192	MK225DK	186	MK500KBCF	216
MK112BB	185	MK225DKC	190	MK500KD	186
MK112BBC	189	MK225KB	186	MK500KDAB	213

GENERAL
INFORMATION

GENERAL INFORMATION

ALPHA NUMERIC PART NUMBER INDEX

Catalog Part No.	Catalog Page No.	Catalog Part No.	Catalog Page No.	Catalog Part No.	Catalog Page No.
MK500KDAF	214	MT04K150PBS	199	MT20K075PBK	201
MK500KDC	190	MT04K225KBK	199	MT20K075PBS	201
MK500KDCB	215	MT04K225KBS	199	MT20K112KBK	201
MK500KDCF	216	MT04K225PBK	199	MT20K112KBS	201
MK500KK	187	MT04K225PBS	199	MT20K112PBK	201
MK500KKC	191	MT04K300KBK	199	MT20K112PBS	201
MK500PB	187	MT04K300KBS	199	MT20K150KBK	201
MK500PBAB	213	MT04K300PBK	199	MT20K150KBS	201
MK500PBAF	214	MT04K300PBS	199	MT20K150PBK	201
MK500PBC	191	MT04K500KBK	199	MT20K150PBS	201
MK500PBCB	215	MT04K500KBS	199	MT20K225KBK	201
MK500PBCF	216	MT04K500PBK	199	MT20K225KBS	201
MK500PD	188	MT04K500PBS	199	MT20K225PBK	201
MK500PDC	192	MT04K750KBK	199	MT20K225PBS	201
MK500PK	188	MT04K750KBS	199	MT20K300KBK	201
MK500PKC	192	MT04K750PBK	199	MT20K300KBS	201
MK750BB	185	MT04K750PBS	199	MT20K300PBK	201
MK750BBC	189	MT13K015KBK	200	MT20K300PBS	201
MK750BK	185	MT13K015KBS	200	MT20K500KBK	201
MK750BKC	189	MT13K015PBK	200	MT20K500KBS	201
MK750DB	185	MT13K015PBS	200	MT20K500PBK	201
MK750DBC	189	MT13K030KBK	200	MT20K500PBS	201
MK750DK	186	MT13K030KBS	200	MT20K750KBK	201
MK750DKC	190	MT13K030PBK	200	MT20K750KBS	201
MK750KB	186	MT13K030PBS	200	MT20K750PBK	201
MK750KBAB	213	MT13K045KBK	200	MT20K750PBS	201
MK750KBAF	214	MT13K045KBS	200	NMK015KB	206
MK750KBC	190	MT13K045PBK	200	NMK015KBC	206
MK750KBCB	215	MT13K045PBS	200	NMK015KBK	208
MK750KBCF	216	MT13K075KBK	200	NMK015KBS	207
MK750KD	186	MT13K075KBS	200	NMK015PB	206
MK750KDAB	213	MT13K075PBK	200	NMK015PBC	207
MK750KDAF	214	MT13K075PBS	200	NMK015PBK	208
MK750KDC	190	MT13K112KBK	200	NMK015PBS	207
MK750KDCB	215	MT13K112KBS	200	NMK030KB	206
MK750KDCF	216	MT13K112PBK	200	NMK030KBC	206
MK750KK	187	MT13K112PBS	200	NMK030KBK	208
MK750KKC	191	MT13K150KBK	200	NMK030KBS	207
MK750PB	187	MT13K150KBS	200	NMK030PB	206
MK750PBAB	213	MT13K150PBK	200	NMK030PBC	207
MK750PBAF	214	MT13K150PBS	200	NMK030PBK	208
MK750PBC	191	MT13K225KBK	200	NMK030PBS	207
MK750PBCB	215	MT13K225KBS	200	NMK045KB	206
MK750PBCF	216	MT13K225PBK	200	NMK045KBC	206
MK750PD	188	MT13K225PBS	200	NMK045KBK	208
MK750PDC	192	MT13K300KBK	200	NMK045KBS	207
MK750PK	188	MT13K300KBS	200	NMK045PB	206
MK750PKC	192	MT13K300PBK	200	NMK045PBC	207
MT04K015KBK	199	MT13K300PBS	200	NMK045PBK	208
MT04K015KBS	199	MT13K500KBK	200	NMK045PBS	207
MT04K015PBK	199	MT13K500KBS	200	NMK075KB	206
MT04K015PBS	199	MT13K500PBK	200	NMK075KBC	206
MT04K030KBK	199	MT13K500PBS	200	NMK075KBK	208
MT04K030KBS	199	MT13K750KBK	200	NMK075KBS	207
MT04K030PBK	199	MT13K750KBS	200	NMK075PB	206
MT04K030PBS	199	MT13K750PBK	200	NMK075PBC	207
MT04K045KBK	199	MT13K750PBS	200	NMK075PBK	208
MT04K045KBS	199	MT20K015KBK	201	NMK075PBS	207
MT04K045PBK	199	MT20K015KBS	201	NMK112KB	206
MT04K045PBS	199	MT20K015PBK	201	NMK112KBC	206
MT04K075KBK	199	MT20K015PBS	201	NMK112KBK	208
MT04K075KBS	199	MT20K030KBK	201	NMK112KBS	207
MT04K075PBK	199	MT20K030KBS	201	NMK112PB	206
MT04K075PBS	199	MT20K030PBK	201	NMK112PBC	207
MT04K112KBK	199	MT20K030PBS	201	NMK112PBK	208
MT04K112KBS	199	MT20K045KBK	201	NMK112PBS	207
MT04K112PBK	199	MT20K045KBS	201	NMK150KB	206
MT04K112PBS	199	MT20K045PBK	201	NMK150KBC	206
MT04K150KBK	199	MT20K045PBS	201	NMK150KBK	208
MT04K150KBS	199	MT20K075KBK	201	NMK150KBS	207
MT04K150PBK	199	MT20K075KBS	201	NMK150PB	206

GENERAL
INFORMATION

GENERAL INFORMATION

ALPHA NUMERIC PART NUMBER INDEX

Catalog Part No.	Catalog Page No.	Catalog Part No.	Catalog Page No.	Catalog Part No.	Catalog Page No.
NMK150PBC	207	PH1000AJ	50	PH200CG	57
NMK150PBK	208	PH1000AM	56	PH200CJ	51
NMK150PBS	207	PH1000AP	53	PH200JE	59
NMK225KB	206	PH1000CJ	51	PH200JG	59
NMK225KBC	206	PH1000KP	55	PH200KG	61
NMK225KBK	208	PH1000PP	54	PH200KP	55
NMK225KBS	207	PH1000PR	60	PH200LG	62
NMK225PB	206	PH1000QP	53	PH200LJ	52
NMK225PBC	207	PH1000SP	55	PH200MG	58
NMK225PBK	208	PH100AG	57	PH200MJ	51
NMK225PBS	207	PH100AJ	50	PH200PP	54
NMK300KB	206	PH100AM	56	PH200PR	60
NMK300KBC	206	PH100AP	53	PH200QP	53
NMK300KBK	208	PH100AR	62	PH200SP	55
NMK300KBS	207	PH100CG	57	PH250AG	57
NMK300PB	206	PH100CJ	51	PH250AJ	50
NMK300PBC	207	PH100JE	59	PH250AM	56
NMK300PBK	208	PH100JG	59	PH250AP	53
NMK300PBS	207	PH100JJ	61	PH250AR	62
NMK500KB	206	PH100KG	61	PH250CG	57
NMK500KBC	206	PH100KP	55	PH250CJ	51
NMK500KBK	208	PH100LG	62	PH250JE	59
NMK500KBS	207	PH100LJ	52	PH250JG	59
NMK500PB	206	PH100MG	58	PH250JJ	61
NMK500PBC	207	PH100MJ	51	PH250KG	61
NMK500PBK	208	PH100PP	54	PH250KP	55
NMK500PBS	207	PH100PR	60	PH250LG	62
NMK750KB	206	PH100QP	53	PH250LJ	52
NMK750KBC	206	PH100SP	55	PH250MG	58
NMK750KBK	208	PH1500AJ	50	PH250MJ	51
NMK750KBS	207	PH1500AM	56	PH250PP	54
NMK750PB	206	PH1500AP	53	PH250PR	60
NMK750PBC	207	PH1500CJ	51	PH250QP	53
NMK750PBK	208	PH1500KP	55	PH250SP	55
NMK750PBS	207	PH1500PP	54	PH25AG	57
P002BBCF	221	PH1500PR	60	PH25AJ	50
P002DBCF	221	PH1500QP	53	PH25AM	56
P002KBCF	221	PH1500SP	55	PH25AP	53
P002KDCF	222	PH150AG	57	PH25AR	62
P002KKCF	222	PH150AJ	50	PH25CG	57
P002PBCF	222	PH150AM	56	PH25CJ	51
P002PDCF	223	PH150AP	53	PH25DJG	72
P002PKCF	223	PH150AR	62	PH25JE	59
P003BBCF	221	PH150CG	57	PH25JG	59
P003DBCF	221	PH150CJ	51	PH25JJ	61
P003KBCF	221	PH150JE	59	PH25KG	61
P003KDCF	222	PH150JG	59	PH25KP	55
P003KKCF	222	PH150JJ	61	PH25LG	62
P003PBCF	222	PH150KG	61	PH25LJ	52
P003PDCF	223	PH150KP	55	PH25MG	58
P003PKCF	223	PH150LG	62	PH25MJ	51
P006BBCF	221	PH150LJ	52	PH25PP	54
P006DBCF	221	PH150MG	58	PH25PR	60
P006KBCF	221	PH150MJ	51	PH25QP	53
P006KDCF	222	PH150PP	54	PH25SP	55
P006KKCF	222	PH150PR	60	PH3000AJ	50
P006PBCF	222	PH150QP	53	PH3000AP	53
P006PDCF	223	PH150SP	55	PH3000KP	55
P006PKCF	223	PH2000AJ	50	PH3000PR	60
P009KBCF	221	PH2000AP	53	PH3000QP	53
P009PBCF	222	PH2000CJ	51	PH3000SP	55
P009PDCF	223	PH2000KP	55	PH350AJ	50
P015KBCF	221	PH2000PP	54	PH350AM	56
P015PBCF	222	PH2000PR	60	PH350AP	53
P015PDCF	223	PH2000QP	53	PH350CJ	51
P030KBCF	221	PH2000SP	55	PH350KP	55
P030PBCF	222	PH200AG	57	PH350LJ	52
P030PDCF	223	PH200AJ	50	PH350MJ	51
P045KBCF	221	PH200AM	56	PH350PP	54
P045PBCF	222	PH200AP	53	PH350PR	60
P045PDCF	223	PH200AR	62	PH350QP	53

GENERAL
INFORMATION

GENERAL INFORMATION

ALPHA NUMERIC PART NUMBER INDEX

Catalog Part No.	Catalog Page No.	Catalog Part No.	Catalog Page No.	Catalog Part No.	Catalog Page No.
PH350SP	55	PHD100QP	70	PT150MFMD	44
PH5000AP	53	PHD150AG	71	PT150MGJ	39
PH5000QP	53	PHD150AJ	69	PT150MGMD	43
PH5000SP	55	PHD150AR	71	PT150MHMC	42
PH500AJ	50	PHD150JG	72	PT150MLI	37
PH500AM	56	PHD150QP	70	PT150MQMJ	34
PH500AP	53	PHD200AG	71	PT150MRMA	40
PH500CJ	51	PHD200AJ	69	PT150MSG	40
PH500KP	55	PHD200AR	71	PT150PG	36
PH500LJ	52	PHD200JG	72	PT150PP	45
PH500MJ	51	PHD200QP	70	PT150QG	35
PH500PP	54	PHD250AG	71	PT150QP	45
PH500PR	60	PHD250AJ	69	PT150QR	41
PH500QP	53	PHD250AR	71	PT2000MBMH	35
PH500SP	55	PHD250JG	72	PT2000MQMJ	34
PH50AG	57	PHD250QP	70	PT200CM	37
PH50AJ	50	PHD25AG	71	PT200MAMJ	38
PH50AM	56	PHD25AJ	69	PT200MBMH	35
PH50AP	53	PHD25AR	71	PT200MCM	43
PH50AR	62	PHD25QP	70	PT200MDMX	39
PH50CG	57	PHD350AJ	69	PT200MEMX	41
PH50CJ	51	PHD350QP	70	PT200MFMD	44
PH50JE	59	PHD500AJ	69	PT200MGJ	39
PH50JG	59	PHD500QP	70	PT200MGMD	43
PH50JJ	61	PHD50AG	71	PT200MHMC	42
PH50KG	61	PHD50AJ	69	PT200MLI	37
PH50KP	55	PHD50AR	71	PT200MQMJ	34
PH50LG	62	PHD50JG	72	PT200MRMA	40
PH50LJ	52	PHD50QP	70	PT200MSG	40
PH50MG	58	PHD75AG	71	PT200PG	36
PH50MJ	51	PHD75AJ	69	PT200PP	45
PH50PP	54	PHD75AR	71	PT200QG	35
PH50PR	60	PHD75JG	72	PT200QP	45
PH50QP	53	PHD75QP	70	PT200QR	41
PH50SP	55	PT1000CM	37	PT250CM	37
PH7500AP	53	PT1000MAMJ	38	PT250MAMJ	38
PH7500QP	53	PT1000MBMH	35	PT250MBMH	35
PH750AJ	50	PT1000MDMX	39	PT250MCM	43
PH750AM	56	PT1000MEMX	41	PT250MDMX	39
PH750AP	53	PT1000MGJ	39	PT250MEMX	41
PH750CJ	51	PT1000MLI	37	PT250MFMD	44
PH750KP	55	PT1000MQMJ	34	PT250MGJ	39
PH750MJ	51	PT1000PP	45	PT250MGMD	43
PH750PP	54	PT1000QP	45	PT250MHMC	42
PH750PR	60	PT100CM	37	PT250MLI	37
PH750QP	53	PT100MAMJ	38	PT250MQMJ	34
PH750SP	55	PT100MBMH	35	PT250MRMA	40
PH75AG	57	PT100MCM	43	PT250MSG	40
PH75AJ	50	PT100MDMX	39	PT250PG	36
PH75AM	56	PT100MEMX	41	PT250PP	45
PH75AP	53	PT100MFMD	44	PT250QG	35
PH75AR	62	PT100MGJ	39	PT250QP	45
PH75CG	57	PT100MGMD	43	PT250QR	41
PH75CJ	51	PT100MHMC	42	PT25CM	37
PH75JE	59	PT100MLI	37	PT25MAMJ	38
PH75JG	59	PT100MQMJ	34	PT25MBMH	35
PH75JJ	61	PT100MRMA	40	PT25MCM	43
PH75KG	61	PT100MSG	40	PT25MDMX	39
PH75KP	55	PT100PG	36	PT25MEMX	41
PH75LG	62	PT100PP	45	PT25MFMD	44
PH75LJ	52	PT100QG	35	PT25MGJ	39
PH75MG	58	PT100QP	45	PT25MGMD	43
PH75MJ	51	PT100QR	41	PT25MHMC	42
PH75PP	54	PT1500MBMH	35	PT25MLI	37
PH75PR	60	PT1500MQMJ	34	PT25MQMJ	34
PH75QP	53	PT150CM	37	PT25PG	36
PH75SP	55	PT150MAMJ	38	PT25PP	45
PHD100AG	71	PT150MBMH	35	PT25QG	35
PHD100AJ	69	PT150MCM	43	PT25QP	45
PHD100AR	71	PT150MDMX	39	PT25QR	41
PHD100JG	72	PT150MEMX	41	PT3000MBMH	35

GENERAL
INFORMATION

GENERAL INFORMATION

ALPHA NUMERIC PART NUMBER INDEX

Catalog Part No.	Catalog Page No.	Catalog Part No.	Catalog Page No.	Catalog Part No.	Catalog Page No.
PT3000MQMJ	34	PT750MEMX	41	PTD75PP	68
PT300MAMJ	38	PT750MGJ	39	PTD75PR	69
PT300MBMH	35	PT750MLI	37	PTD75QR	67
PT300MGJ	39	PT750MQMJ	34	Q002LECF	219
PT300MLI	37	PT750PG	36	Q002PECF	220
PT300MQMJ	34	PT750PP	45	Q002XECF	220
PT300PG	36	PT750QG	35	Q003BECF	219
PT300PP	45	PT750QP	45	Q003FECF	219
PT300QG	35	PT75CM	37	Q003HECF	219
PT300QP	45	PT75MAMJ	38	Q003LECF	219
PT350CM	37	PT75MBMH	35	Q003PECF	220
PT350MAMJ	38	PT75MCMJ	43	Q003XECF	220
PT350MBMH	35	PT75MDMX	39	Q005BECF	219
PT350MCMJ	43	PT75MEMX	41	Q005FECF	219
PT350MDMX	39	PT75MFMD	44	Q005HECF	219
PT350MEMX	41	PT75MGJ	39	Q005LECF	219
PT350MFMD	44	PT75MGMD	43	Q005PECF	220
PT350MGJ	39	PT75MHMC	42	Q005XECF	220
PT350MGMD	43	PT75MLI	37	Q007BECF	219
PT350MHMC	42	PT75MQMJ	34	Q007FECF	219
PT350MLI	37	PT75MRMA	40	Q007HECF	219
PT350MQMJ	34	PT75MSG	40	Q007LECF	219
PT350MRMA	40	PT75PG	36	Q007PECF	220
PT350MSG	40	PT75PP	45	Q007XECF	220
PT350PG	36	PT75QG	35	Q010BECF	219
PT350PP	45	PT75QP	45	Q010FECF	219
PT350QG	35	PT75QR	41	Q010HECF	219
PT350QP	45	PTD100MQMJ	66	Q010LECF	219
PT5000MBMH	35	PTD100PG	67	Q010PECF	220
PT5000MQMJ	34	PTD100PP	68	Q010XECF	220
PT500CM	37	PTD100PR	69	Q015KECF	220
PT500MAMJ	38	PTD100QR	67	Q015PECF	220
PT500MBMH	35	PTD150MQMJ	66	Q025KECF	220
PT500MCMJ	43	PTD150PG	67	Q025PECF	220
PT500MDMX	39	PTD150PP	68	Q037KECF	220
PT500MEMX	41	PTD150PR	69	Q037PECF	220
PT500MFMD	44	PTD150QR	67	Q1C0LECF	219
PT500MGJ	39	PTD200MQMJ	66	Q1C0PECF	220
PT500MGMD	43	PTD200PG	67	Q1C0XECF	220
PT500MHMC	42	PTD200PP	68	Q1C5LECF	219
PT500MLI	37	PTD200PR	69	Q1C5PECF	220
PT500MQMJ	34	PTD200QR	67	Q1C5XECF	220
PT500MRMA	40	PTD250MQMJ	66	QC75LECF	219
PT500MSG	40	PTD250PG	67	QC75PECF	220
PT500PG	36	PTD250PP	68	QT157M	222
PT500PP	45	PTD250PR	69	QT307M	222
PT500QG	35	PTD250QR	67	QT457M	222
PT500QP	45	PTD25MQMJ	66	QT97M	222
PT50CM	37	PTD25PG	67	RC0002M12	138
PT50MAMJ	38	PTD25PP	68	RC0004N65	138
PT50MBMH	35	PTD25PR	69	RC0008N30	138
PT50MCMJ	43	PTD25QR	67	RC0012N25	138
PT50MDMX	39	PTD300MQMJ	66	RC0018N15	138
PT50MEMX	41	PTD300PG	67	RC0025N12	138
PT50MFMD	44	PTD300PP	68	RC0035P80	138
PT50MGJ	39	PTD300PR	69	RC0045P70	138
PT50MGMD	43	PTD350MQMJ	66	RC0055P50	138
PT50MHMC	42	PTD350PG	67	RC0080P40	138
PT50MLI	37	PTD350PP	68	RC0110P30	138
PT50MQMJ	34	PTD350PR	69	RC0130P20	138
PT50MRMA	40	PTD500MQMJ	66	RC0160P15	138
PT50MSG	40	PTD500PG	67	RC0200P11	138
PT50PG	36	PTD500PP	68	RC0250U90	138
PT50PP	45	PTD500PR	69	RC0320U75	138
PT50QG	35	PTD50MQMJ	66	RC0400U61	138
PT50QP	45	PTD50PG	67	RC0500U50	138
PT50QR	41	PTD50PP	68	RC0600U40	138
PT750CM	37	PTD50PR	69	RM0002M12	131, 132
PT750MAMJ	38	PTD50QR	67	RM0002M20	131, 132
PT750MBMH	35	PTD75MQMJ	66	RM0002M32	131, 132
PT750MDMX	39	PTD75PG	67	RM0004M12	131, 132

GENERAL INFORMATION

GENERAL INFORMATION

ALPHA NUMERIC PART NUMBER INDEX

Catalog Part No.	Catalog Page No.	Catalog Part No.	Catalog Page No.	Catalog Part No.	Catalog Page No.
RM0004M22	131, 132	RM0600U80	131, 133	SL150CM	81
RM0004N30	131, 132	RM0700U41	131, 133	SL150CR	81
RM0004N65	131, 132	RM0700U68	131, 133	SL150JE	81
RM0004N91	131, 132	RM0750U15	131, 133	SL150JG	81
RM0008N15	131, 132	RM0750U25	131, 133	SL150JR	81
RM0008N30	131, 132	RM0750U36	131, 133	SL150KP	81
RM0008N50	131, 132	RM0750U60	131, 133	SL150LG	81
RM0008N75	131, 132	RM0900U13	131, 133	SL150LJ	81
RM0012N13	131, 132	RM0900U26	131, 133	SL150MJ	81
RM0012N25	131, 132	RM0900U32	131, 133	SL150PG	81
RM0012N31	131, 132	RM0900U43	131, 133	SL150QJ	81
RM0012N42	131, 132	RM0900U53	131, 133	SL150QP	81
RM0012N51	131, 132	RM1000U11	131, 133	SL150QR	81
RM0018N15	131, 132	RM1000U18	131, 133	SL200AJ	81
RM0018N25	131, 132	RM1000U29	131, 133	SL200AM	81
RM0018P80	131, 132	RM1000U38	131, 133	SL200AP	81
RM0025N12	131, 132	RM1000U48	131, 133	SL200CJ	81
RM0025N20	131, 132	RM1200U10	131, 133	SL200CM	81
RM0025P50	131, 132	RM1200U15	131, 133	SL200KP	81
RM0035N12	131, 132	RM1200U18	131, 133	SL200LJ	81
RM0035N17	131, 132	RM1200U24	131, 133	SL200MJ	81
RM0035P40	131, 132	RM1200U30	131, 133	SL200QJ	81
RM0035P80	131, 132	RM1200U40	131, 133	SL200QP	81
RM0045N12	131, 132	SL1000AJ	81	SL200AE	81
RM0045P30	131, 132	SL1000AM	81	SL200AG	81
RM0045P70	131, 132	SL1000AP	81	SL200AJ	81
RM0055P25	131, 132	SL1000CJ	81	SL200AM	81
RM0055P50	131, 132	SL1000CM	81	SL200AP	81
RM0055P85	131, 132	SL1000KP	81	SL200AR	81
RM0080P20	131, 132	SL1000LJ	81	SL200CG	81
RM0080P23	131, 132	SL1000MJ	81	SL200CJ	81
RM0080P40	131, 132	SL1000QJ	81	SL200CM	81
RM0080P70	131, 132	SL1000QP	81	SL200CR	81
RM0110P15	131, 132	SL100AE	81	SL200JE	81
RM0110P18	131, 132	SL100AG	81	SL200JG	81
RM0110P30	131, 132	SL100AJ	81	SL200JR	81
RM0110P45	131, 132	SL100AM	81	SL200KP	81
RM0130P10	131, 132	SL100AP	81	SL200LG	81
RM0130P20	131, 132	SL100AR	81	SL200LJ	81
RM0130P30	131, 132	SL100CG	81	SL200MJ	81
RM0130P37	131, 132	SL100CJ	81	SL200PG	81
RM0160P15	131, 132	SL100CM	81	SL200QJ	81
RM0160P23	131, 132	SL100CR	81	SL200QP	81
RM0160P32	131, 132	SL100JE	81	SL200QR	81
RM0160U75	131, 132	SL100JG	81	SL250AE	81
RM0200P11	131, 133	SL100JR	81	SL250AG	81
RM0200P19	131, 133	SL100KP	81	SL250AJ	81
RM0200P24	131, 133	SL100LG	81	SL250AM	81
RM0200U55	131, 133	SL100LJ	81	SL250AP	81
RM0250P15	131, 133	SL100MJ	81	SL250AR	81
RM0250P19	131, 133	SL100PG	81	SL250CG	81
RM0250U45	131, 133	SL100QJ	81	SL250CJ	81
RM0250U90	131, 133	SL100QP	81	SL250CM	81
RM0320P13	131, 133	SL100QR	81	SL250CR	81
RM0320P16	131, 133	SL1500AJ	81	SL250JE	81
RM0320U40	131, 133	SL1500AM	81	SL250JG	81
RM0320U75	131, 133	SL1500AP	81	SL250JR	81
RM0320U96	131, 133	SL1500CJ	81	SL250KP	81
RM0400P11	131, 133	SL1500CM	81	SL250LG	81
RM0400P14	131, 133	SL1500KP	81	SL250LJ	81
RM0400U30	131, 133	SL1500LJ	81	SL250MJ	81
RM0400U61	131, 133	SL1500MJ	81	SL250PG	81
RM0400U82	131, 133	SL1500QJ	81	SL250QJ	81
RM0500U25	131, 133	SL1500QP	81	SL250QP	81
RM0500U50	131, 133	SL150AE	81	SL250QR	81
RM0500U57	131, 133	SL150AG	81	SL25AE	81
RM0500U85	131, 133	SL150AJ	81	SL25AG	81
RM0500U96	131, 133	SL150AM	81	SL25AJ	81
RM0600U20	131, 133	SL150AP	81	SL25AM	81
RM0600U40	131, 133	SL150CG	81	SL25AP	81
RM0600U65	131, 133	SL150CJ	81	SL25AR	81

GENERAL
INFORMATION

GENERAL INFORMATION

ALPHA NUMERIC PART NUMBER INDEX

Catalog Part No.	Catalog Page No.	Catalog Part No.	Catalog Page No.	Catalog Part No.	Catalog Page No.
SL25CG.....	81	SL50JE.....	81	UT12501.....	167
SL25CJ.....	81	SL50JG.....	81	UT15001.....	167
SL25CM.....	81	SL50JR.....	81	UT15006.....	167
SL25CR.....	81	SL50KP.....	81	UT3031.....	168
SL25JE.....	81	SL50LG.....	81	UT3036.....	168
SL25JG.....	81	SL50LJ.....	81	UT3071.....	168
SL25JR.....	81	SL50MJ.....	81	UT3076.....	168
SL25KP.....	81	SL50PG.....	81	UT3151.....	168
SL25LG.....	81	SL50QJ.....	81	UT3156.....	168
SL25LJ.....	81	SL50QP.....	81	UT3221.....	168
SL25MJ.....	81	SL50QR.....	81	UT3224.....	168
SL25PG.....	81	SL750AJ.....	81	UT3226.....	168
SL25QJ.....	81	SL750AM.....	81	UT3301.....	168
SL25QP.....	81	SL750AP.....	81	UT3304.....	168
SL25QR.....	81	SL750CJ.....	81	UT3306.....	168
SL3000AJ.....	81	SL750CM.....	81	UT3451.....	168
SL3000CJ.....	81	SL750KP.....	81	UT3454.....	168
SL350AE.....	81	SL750LJ.....	81	UT3456.....	168
SL350AG.....	81	SL750MJ.....	81	UT3751.....	168
SL350AJ.....	81	SL750QJ.....	81	UT3754.....	168
SL350AM.....	81	SL750QP.....	81	UT3756.....	168
SL350AP.....	81	SL75AE.....	81	Y003KGCF.....	230
SL350AR.....	81	SL75AG.....	81	Y006KGCF.....	230
SL350CG.....	81	SL75AJ.....	81	Y009KGCF.....	230
SL350CJ.....	81	SL75AM.....	81	Y015KGC.....	230
SL350CM.....	81	SL75AP.....	81	Y030KB.....	228
SL350CR.....	81	SL75AR.....	81	Y030KD.....	228
SL350JE.....	81	SL75CG.....	81	Y030KGC.....	230
SL350JG.....	81	SL75CJ.....	81	Y030PB.....	228
SL350JR.....	81	SL75CM.....	81	Y030PD.....	227
SL350KP.....	81	SL75CR.....	81	Y030PG.....	227
SL350LG.....	81	SL75JE.....	81	Y045KB.....	228
SL350LJ.....	81	SL75JG.....	81	Y045KD.....	228
SL350MJ.....	81	SL75JR.....	81	Y045KGC.....	230
SL350PG.....	81	SL75KP.....	81	Y045PB.....	228
SL350QJ.....	81	SL75LG.....	81	Y045PD.....	227
SL350QP.....	81	SL75LJ.....	81	Y045PG.....	227
SL350QR.....	81	SL75MJ.....	81	Y045PH.....	227
SL5000AJ.....	81	SL75PG.....	81	Y075KB.....	228
SL500AE.....	81	SL75QJ.....	81	Y075KD.....	228
SL500AG.....	81	SL75QP.....	81	Y075KG.....	228
SL500AJ.....	81	SL75QR.....	81	Y075KGC.....	230
SL500AM.....	81	US10121.....	167	Y075PB.....	228
SL500AP.....	81	US10251.....	167	Y075PD.....	227
SL500AR.....	81	US10501.....	167	Y075PG.....	227
SL500AR.....	81	US110001.....	167	Y075PH.....	227
SL500CG.....	81	US110004.....	167	Y075PK.....	227
SL500CJ.....	81	US11001.....	167	Y112CB.....	229
SL500CM.....	81	US115001.....	167	Y112KB.....	228
SL500CR.....	81	US115004.....	167	Y112KD.....	228
SL500JE.....	81	US120001.....	167	Y112KG.....	228
SL500JG.....	81	US120004.....	167	Y112KGC.....	230
SL500JR.....	81	US12501.....	167	Y112PB.....	228
SL500KP.....	81	US15001.....	167	Y112PD.....	227
SL500LG.....	81	US15004.....	167	Y112PG.....	227
SL500LJ.....	81	US3031.....	168	Y112PH.....	227
SL500MJ.....	81	US3034.....	168	Y112PK.....	227
SL500PG.....	81	US3071.....	168	Y150CB.....	229
SL500QJ.....	81	US3074.....	168	Y150KB.....	228
SL500QP.....	81	US3151.....	168	Y150KD.....	228
SL500QR.....	81	US3154.....	168	Y150KG.....	228
SL50AE.....	81	UT10121.....	167	Y150KGC.....	230
SL50AG.....	81	UT10251.....	167	Y150PB.....	228
SL50AJ.....	81	UT10501.....	167	Y150PD.....	227
SL50AM.....	81	UT110001.....	167	Y150PG.....	227
SL50AP.....	81	UT110006.....	167	Y150PH.....	227
SL50AR.....	81	UT11001.....	167	Y150PK.....	227
SL50CG.....	81	UT115001.....	167	Y225CB.....	229
SL50CJ.....	81	UT115006.....	167	Y225KB.....	228
SL50CM.....	81	UT120001.....	167	Y225KD.....	228
SL50CR.....	81	UT120006.....	167	Y225KG.....	228

GENERAL INFORMATION

GENERAL INFORMATION

ALPHA NUMERIC PART NUMBER INDEX

Catalog Part No.	Catalog Page No.	Catalog Part No.	Catalog Page No.	Catalog Part No.	Catalog Page No.
Y225KGC	230				
Y225PB	228				
Y225PD	227				
Y225PG	227				
Y225PH	227				
Y225PK	227				
Y300CB	229				
Y300KG	228				
Y300PH	227				
Y300PK	227				
Y500CB	229				
Y500KG	228				
Y500PK	227				

GENERAL
INFORMATION

GENERAL INFORMATION

Yes, I am interested in receiving the following information on other Hammond® Transformer Products.

Literature Name	Code	Qty
Hammond Power Solutions - Showcase of Products Brochure	TGSFB	_____
Transformer Products Catalog	HTP-02	_____
Dry Type Transformer Standard Products Price List (U.S.)	HTP-02UPL	_____
Dry Type Transformer Standard Products Price List (Cdn.)	HTP-02CPL	_____
Dry Type Power Transformers	6PWR	_____
Epoxy Seal Dry Type Power Transformers	ESPB4	_____
Dry Type Transformer Impregnations (English)	DTTI6	_____
Dry Type Transformer Impregnations (French)	DTTI6-F	_____
Distribution Installation, Operation & Maintenance Guide - up to 750 kVA (English)	IOMGD	_____
Distribution Installation, Operation & Maintenance Guide - up to 750 kVA (French)	IOMGD-F	_____
Distribution Installation, Operation & Maintenance Guide - up to 750 kVA (Spanish)	IOMGD-S	_____
Power Installation, Operation & Maintenance Guide - over 750kVA (English)	IOMGDP	_____
Power Installation, Operation & Maintenance Guide - over 750kVA (English)	IOMGDP-F	_____
Power Installation, Operation & Maintenance Guide - over 750kVA (Spanish)	IOMGDP-S	_____
Distributor Training Modules - Call for Details and Availability	TM-??	_____
Hammond Transformer Complete Binder (all literature) - U.S.	USTGB-Full	_____
Hammond Transformer Complete Binder (all literature) - Cdn.	CDNTGB-Full	_____

Please specify whether you want paper or electronic (PDF) copies. Paper PDF File

To receive one of the catalogs, brochures or flyers shown, please fill in the information below, photocopy this page, and fax or mail it to **Literature Services** at the following number or address.

FAX TO: Literature Services
Hammond Power Solutions Inc.
(519) 822-9701

or MAIL TO: Literature Services
Hammond Power Solutions Inc.
595 Southgate Drive,
Guelph, Ontario, Canada N1G 3W6

URL: www.hammondpowersolutions.com

E-MAIL:
sales@hammondpowersolutions.com

My need for Transformer Products is Immediate Future

Please send me the name of your local Hammond Sales Representative

Please provide me with the name of the local Authorized Hammond Distributor

Name: _____

E-Mail Address: _____

Company: _____

Address: _____

City, State: _____

Zip Code: _____

Telephone: _____

Fax: _____

Please check one:

- | | |
|---|---|
| <input type="checkbox"/> Electrical Distributor | <input type="checkbox"/> Electronic Distributor |
| <input type="checkbox"/> Contractor | <input type="checkbox"/> Panel Builder |
| <input type="checkbox"/> MRO | <input type="checkbox"/> OEM |
| <input type="checkbox"/> Consultant | <input type="checkbox"/> Engineering Firm |
| <input type="checkbox"/> Other: _____ | |

GENERAL INFORMATION

