



SECTION 4

DRIVE ISOLATION TRANSFORMERS

Aluminum and Copper Wound Three Phase

Description and Applications	144
Selecting Drive Isolation Transformers	144
Aluminum and Copper Features	145
Aluminum Selection Tables	146
Copper Selection Tables	149
Termination Details	152
Accessories - Wall Mounting Kits & Anti-Vibration Pads	273

THREE PHASE, DRIVE ISOLATION TRANSFORMERS

With today's technological advances in solid-state power control devices, the use of AC and DC variable speed drives has proliferated in many industrial markets. General purpose distribution transformers are not adequate for this type of application.

Hammond's Drive Isolation Transformers are designed to meet the rugged demands of both AC and DC variable speed drives and also to provide the required voltage change. The separate primary and secondary windings provide electrical isolation between the incoming line and the SCR load. The windings are designed to withstand overcurrent of 150% of the rated load for 60 seconds or 200% of the rated load for 30 seconds. A duty cycle of one start for every two hours is permitted.

Drive Isolation Transformers are sized to match standard motor horsepower and voltage ratings. Standard sizes range from 5 to 600 HP in six standard voltages. Nonstandard sizes and voltages are available upon request.



SELECTION INSTRUCTIONS

Select the Drive Isolation transformer according to the recommendations from the motor drive system manufacturer or supplier. If this information is unavailable, use the table below as a guide for selecting the transformer kVA for a required motor horsepower.

Motor H.P.	Transformer kVA
5	7.5
7.5	11
10	14
15	20
20	27
25	34
30	40
40	51
50	63
60	75

Motor H.P.	Transformer kVA
75	93
100	118
125	145
150	175
200	220
250	275
300	330
400	440
500	550
600	660



ALUMINUM AND COPPER WOUND FEATURES

7.5 to 175 kVA



220 to 660 kVA



THREE PHASE FEATURES

FEATURE	7.5 to 175 kVA	220 to 660 kVA
UL Listed	File: E112313	File: E112313
CSA Certified	File: LR3902	File: LR3902
Frequency	60 Hz	60 Hz
Insulation System	220°C (150°C rise) 180°C (115°C rise) on Copper units upto 34kVA.	220°C (150°C rise) 180°C (115°C rise) on Copper units upto 34kVA.
Enclosure Type	Heavy Duty Ventilated NEMA Type 3R	Heavy Duty Ventilated NEMA Type 3R
Enclosure Finish	ANSI 61 Grey	ANSI 61 Grey
Neutral	Neutral terminal for field connection.	Neutral terminal for field connection.
Standard Primary Taps	Refer to wiring diagrams for details.	Refer to wiring diagrams for details.
Termination	Front accessible separate high and low voltage terminations; suitable for copper and aluminum, are provided for easy cable installation.	Front accessible separate high and low voltage terminations; suitable for copper and aluminum, are provided for easy cable installation
Thermostat	Standard on all units.	Standard on all units.
Conduit Knock-Outs	Standard on all units.	None
Impedance	Typically 4 to 6%.	Typically 4 to 6%.
Mounting	Standard Floor Mounting. Optional wall mounting kits are available on units from 7.5 to 75 kVA.	Floor mounting only.
Short Circuit Withstand	Meets UL and CSA short circuit withstand requirements.	Meets UL and CSA short circuit withstand requirements.



ALUMINUM WOUND, THREE PHASE

Products listed on this page are available as 'CE Mark' products. Please consult our sales office.

Selection Tables

Listed are our standard voltages. Other primary and secondary voltages available are 208, 240, 380 and 600.

230 Primary Volts 230 Secondary Volts 60 Hz

kVA	Catalog Number	Case Style (Pages 254-257)	Approx. Dimensions (Inches)			Approx. Weight (Lbs.)	Mtg Type W - Wall F - Floor	Wiring Diagram (Pages 258-269)
			Width	Depth	Height			
7.5	DM007CC	UH1	16.75	14	22	150	W or F	SCD 8
11	DM011CC	UH1	16.75	14	22	160	W or F	SCD 8
14	DM014CC	UH1	16.75	14	22	170	W or F	SCD 8
20	DM020CC	UH2	21.5	19.5	29	240	W or F	SCD 7
27	DM027CC	UH2	21.5	19.5	29	300	W or F	SCD 7
34	DM034CC	UH2	21.5	19.5	29	330	W or F	SCD 7
40	DM040CC	UH2	21.5	19.5	29	350	W or F	SCD 7
51	DM051CC	UH2	21.5	19.5	29	430	W or F	SCD 7
63	DM063CC	UH3	26	21	38	530	W or F	SCD 7
75	DM075CC	UH3	26	21	38	580	W or F	SCD 7
93	DM093CC	UH3	26	21	38	630	F	SCD 7
118	DM118CC	UH3	26	21	38	730	F	SCD 7
145	DM145CC	UH4	30	24	39	830	F	SCD 7
175	DM175CC	UH4	30	24	39	930	F	SCD 7
220	DM220CC	UJ1	39.5	30	50	1350	F	SCD 9
275	DM275CC	UJ1	39.5	30	50	1500	F	SCD 9
330	DM330CC	UJ1	39.5	30	50	1700	F	SCD 9
440	DM440CC	UJ2	48.5	34	59	2100	F	SCD 10
550	DM550CC	UJ2	48.5	34	59	2350	F	SCD 10
660	DM660CC	UJ3	51.5	39	66	2900	F	SCD 10

For Shielded units, just add the suffix 'S' to the end of the above part numbers. (i.e. DM051CCS)

460 Primary Volts 230 Secondary Volts 60 Hz

kVA	Catalog Number	Case Style (Pages 254-257)	Approx. Dimensions (Inches)			Approx. Weight (Lbs.)	Mtg Type W - Wall F - Floor	Wiring Diagram (Pages 258-269)
			Width	Depth	Height			
7.5	DM007JC	UH1	16.75	14	22	150	W or F	SCD 8
11	DM011JC	UH1	16.75	14	22	160	W or F	SCD 8
14	DM014JC	UH1	16.75	14	22	170	W or F	SCD 8
20	DM020JC	UH2	21.5	19.5	29	240	W or F	SCD 7
27	DM027JC	UH2	21.5	19.5	29	300	W or F	SCD 7
34	DM034JC	UH2	21.5	19.5	29	330	W or F	SCD 7
40	DM040JC	UH2	21.5	19.5	29	350	W or F	SCD 7
51	DM051JC	UH2	21.5	19.5	29	430	W or F	SCD 7
63	DM063JC	UH3	26	21	38	530	W or F	SCD 7
75	DM075JC	UH3	26	21	38	580	W or F	SCD 7
93	DM093JC	UH3	26	21	38	630	F	SCD 7
118	DM118JC	UH3	26	21	38	730	F	SCD 7
145	DM145JC	UH4	30	24	39	830	F	SCD 7
175	DM175JC	UH4	30	24	39	930	F	SCD 7
220	DM220JC	UJ1	39.5	30	50	1350	F	SCD 9
275	DM275JC	UJ1	39.5	30	50	1500	F	SCD 9
330	DM330JC	UJ1	39.5	30	50	1700	F	SCD 9
440	DM440JC	UJ2	48.5	34	59	2100	F	SCD 10
550	DM550JC	UJ2	48.5	34	59	2350	F	SCD 10
660	DM660JC	UJ3	51.5	39	66	2900	F	SCD 10

For Shielded units, just add the suffix 'S' to the end of the above part numbers. (i.e. DM051JCS)



ALUMINUM WOUND, THREE PHASE

Products listed on this page are available as 'CE Mark' products. Please consult our sales office.

Selection Tables

Listed are our standard voltages. Other primary and secondary voltages available are 208, 240, 380 and 600.

460 Primary Volts 460 Secondary Volts 60 Hz

kVA	Catalog Number	Case Style (Pages 254-257)	Approx. Dimensions (Inches)			Approx. Weight (Lbs.)	Mtg Type W - Wall F - Floor	Wiring Diagram (Pages 258-269)
			Width	Depth	Height			
7.5	DM007JJ	UH1	16.75	14	22	150	W or F	SCD 8
11	DM011JJ	UH1	16.75	14	22	160	W or F	SCD 8
14	DM014JJ	UH1	16.75	14	22	170	W or F	SCD 8
20	DM020JJ	UH2	21.5	19.5	29	240	W or F	SCD 7
27	DM027JJ	UH2	21.5	19.5	29	300	W or F	SCD 7
34	DM034JJ	UH2	21.5	19.5	29	330	W or F	SCD 7
40	DM040JJ	UH2	21.5	19.5	29	350	W or F	SCD 7
51	DM051JJ	UH2	21.5	19.5	29	430	W or F	SCD 7
63	DM063JJ	UH3	26	21	38	530	W or F	SCD 7
75	DM075JJ	UH3	26	21	38	580	W or F	SCD 7
93	DM093JJ	UH3	26	21	38	630	F	SCD 7
118	DM118JJ	UH3	26	21	38	730	F	SCD 7
145	DM145JJ	UH4	30	24	39	830	F	SCD 7
175	DM175JJ	UH4	30	24	39	930	F	SCD 7
220	DM220JJ	UJ1	39.5	30	50	1350	F	SCD 9
275	DM275JJ	UJ1	39.5	30	50	1500	F	SCD 9
330	DM330JJ	UJ1	39.5	30	50	1700	F	SCD 9
440	DM440JJ	UJ2	48.5	34	59	2100	F	SCD 10
550	DM550JJ	UJ2	48.5	34	59	2350	F	SCD 10
660	DM660JJ	UJ3	51.5	39	66	2900	F	SCD 10

For Shielded units, just add the suffix 'S' to the end of the above part numbers. (i.e. DM051JJS)

480 Primary Volts 240 Secondary Volts 60 Hz

kVA	Catalog Number	Case Style (Pages 254-257)	Approx. Dimensions (Inches)			Approx. Weight (Lbs.)	Mtg Type W - Wall F - Floor	Wiring Diagram (Pages 258-269)
			Width	Depth	Height			
7.5	DM007KD	UH1	16.75	14	22	150	W or F	SCD 8
11	DM011KD	UH1	16.75	14	22	160	W or F	SCD 8
14	DM014KD	UH1	16.75	14	22	170	W or F	SCD 8
20	DM020KD	UH2	21.5	19.5	29	240	W or F	SCD 7
27	DM027KD	UH2	21.5	19.5	29	300	W or F	SCD 7
34	DM034KD	UH2	21.5	19.5	29	330	W or F	SCD 7
40	DM040KD	UH2	21.5	19.5	29	350	W or F	SCD 7
51	DM051KD	UH2	21.5	19.5	29	430	W or F	SCD 7
63	DM063KD	UH3	26	21	38	530	W or F	SCD 7
75	DM075KD	UH3	26	21	38	580	W or F	SCD 7
93	DM093KD	UH3	26	21	38	630	F	SCD 7
118	DM118KD	UH3	26	21	38	730	F	SCD 7
145	DM145KD	UH4	30	24	39	830	F	SCD 7
175	DM175KD	UH4	30	24	39	930	F	SCD 7
220	DM220KD	UJ1	39.5	30	50	1350	F	SCD 9
275	DM275KD	UJ1	39.5	30	50	1500	F	SCD 9
330	DM330KD	UJ1	39.5	30	50	1700	F	SCD 9
440	DM440KD	UJ2	48.5	34	59	2100	F	SCD 10
550	DM550KD	UJ2	48.5	34	59	2350	F	SCD 10
660	DM660KD	UJ3	51.5	39	66	2900	F	SCD 10

For Shielded units, just add the suffix 'S' to the end of the above part numbers. (i.e. DM051KDS)



ALUMINUM WOUND, THREE PHASE

Products listed on this page are available as 'CE Mark' products. Please consult our sales office.

Selection Tables

Listed are our standard voltages. Other primary and secondary voltages available are 208, 240, 380 and 600.

575 Primary Volts 460 Secondary Volts 60 Hz

kVA	Catalog Number	Case Style <small>(Pages 254-257)</small>	Approx. Dimensions (Inches)			Approx. Weight (Lbs.)	Mtg Type W - Wall F - Floor	Wiring Diagram <small>(Pages 258-269)</small>
			Width	Depth	Height			
7.5	DM007NJ	UH1	16.75	14	22	150	W or F	SCD 8
11	DM011NJ	UH1	16.75	14	22	160	W or F	SCD 8
14	DM014NJ	UH1	16.75	14	22	170	W or F	SCD 8
20	DM020NJ	UH2	21.5	19.5	29	240	W or F	SCD 7
27	DM027NJ	UH2	21.5	19.5	29	300	W or F	SCD 7
34	DM034NJ	UH2	21.5	19.5	29	330	W or F	SCD 7
40	DM040NJ	UH2	21.5	19.5	29	350	W or F	SCD 7
51	DM051NJ	UH2	21.5	19.5	29	430	W or F	SCD 7
63	DM063NJ	UH3	26	21	38	530	W or F	SCD 7
75	DM075NJ	UH3	26	21	38	580	W or F	SCD 7
93	DM093NJ	UH3	26	21	38	630	F	SCD 7
118	DM118NJ	UH3	26	21	38	730	F	SCD 7
145	DM145NJ	UH4	30	24	39	830	F	SCD 7
175	DM175NJ	UH4	30	24	39	930	F	SCD 7
220	DM220NJ	UJ1	39.5	30	50	1350	F	SCD 9
275	DM275NJ	UJ1	39.5	30	50	1500	F	SCD 9
330	DM330NJ	UJ1	39.5	30	50	1700	F	SCD 9
440	DM440NJ	UJ2	48.5	34	59	2100	F	SCD 10
550	DM550NJ	UJ2	48.5	34	59	2350	F	SCD 10
660	DM660NJ	UJ3	51.5	39	66	2900	F	SCD 10

For Shielded units, just add the suffix 'S' to the end of the above part numbers. (i.e. DM051NJS)

575 Primary Volts 575 Secondary Volts 60 Hz

kVA	Catalog Number	Case Style <small>(Pages 254-257)</small>	Approx. Dimensions (Inches)			Approx. Weight (Lbs.)	Mtg Type W - Wall F - Floor	Wiring Diagram <small>(Pages 258-269)</small>
			Width	Depth	Height			
7.5	DM007NN	UH1	16.75	14	22	150	W or F	SCD 8
11	DM011NN	UH1	16.75	14	22	160	W or F	SCD 8
14	DM014NN	UH1	16.75	14	22	170	W or F	SCD 8
20	DM020NN	UH2	21.5	19.5	29	240	W or F	SCD 7
27	DM027NN	UH2	21.5	19.5	29	300	W or F	SCD 7
34	DM034NN	UH2	21.5	19.5	29	330	W or F	SCD 7
40	DM040NN	UH2	21.5	19.5	29	350	W or F	SCD 7
51	DM051NN	UH2	21.5	19.5	29	430	W or F	SCD 7
63	DM063NN	UH3	26	21	38	530	W or F	SCD 7
75	DM075NN	UH3	26	21	38	580	W or F	SCD 7
93	DM093NN	UH3	26	21	38	630	F	SCD 7
118	DM118NN	UH3	26	21	38	730	F	SCD 7
145	DM145NN	UH4	30	24	39	830	F	SCD 7
175	DM175NN	UH4	30	24	39	930	F	SCD 7
220	DM220NN	UJ1	39.5	30	50	1350	F	SCD 9
275	DM275NN	UJ1	39.5	30	50	1500	F	SCD 9
330	DM330NN	UJ1	39.5	30	50	1700	F	SCD 9
440	DM440NN	UJ2	48.5	34	59	2100	F	SCD 10
550	DM550NN	UJ2	48.5	34	59	2350	F	SCD 10
660	DM660NN	UJ3	51.5	39	66	2900	F	SCD 10

For Shielded units, just add the suffix 'S' to the end of the above part numbers. (i.e. DM051NNS)



COPPER WOUND, THREE PHASE

Products listed on this page are available as 'CE Mark' products. Please consult our sales office.

Selection Tables

Listed are our standard voltages. Other primary and secondary voltages available are 208, 240, 380 and 600.

230 Primary Volts 230 Secondary Volts 60 Hz

kVA	Catalog Number	Case Style <small>(Pages 254-257)</small>	Approx. Dimensions (Inches)			Approx. Weight (Lbs.)	Mtg Type W - Wall F - Floor	Wiring Diagram <small>(Pages 258-269)</small>
			Width	Depth	Height			
7.5	DM007CCCF	UH1	16.75	14	22	150	W or F	SCD 8
11	DM011CCCF	UH1	16.75	14	22	160	W or F	SCD 8
14	DM014CCCF	UH1	16.75	14	22	170	W or F	SCD 8
20	DM020CCCF	UH2	21.5	19.5	29	240	W or F	SCD 7
27	DM027CCCF	UH2	21.5	19.5	29	300	W or F	SCD 7
34	DM034CCCF	UH2	21.5	19.5	29	330	W or F	SCD 7
40	DM040CCC	UH2	21.5	19.5	29	350	W or F	SCD 7
51	DM051CCC	UH2	21.5	19.5	29	430	W or F	SCD 7
63	DM063CCC	UH3	26	21	38	530	W or F	SCD 7
75	DM075CCC	UH3	26	21	38	580	W or F	SCD 7
93	DM093CCC	UH3	26	21	38	630	F	SCD 7
118	DM118CCC	UH3	26	21	38	730	F	SCD 7
145	DM145CCC	UH4	30	24	39	830	F	SCD 7
175	DM175CCC	UH4	30	24	39	930	F	SCD 7
220	DM220CCC	UJ1	39.5	30	50	1350	F	SCD 9
275	DM275CCC	UJ1	39.5	30	50	1500	F	SCD 9
330	DM330CCC	UJ1	39.5	30	50	1700	F	SCD 9
440	DM440CCC	UJ2	48.5	34	59	2100	F	SCD 10
550	DM550CCC	UJ2	48.5	34	59	2350	F	SCD 10
660	DM660CCC	UJ3	51.5	39	66	2900	F	SCD 10

For Shielded units, just replace the suffix 'CF' or 'C' with the suffix 'KF' or 'K' to the above part numbers. (i.e. DM014CCKF or DM051CCK)

460 Primary Volts 230 Secondary Volts 60 Hz

kVA	Catalog Number	Case Style <small>(Pages 254-257)</small>	Approx. Dimensions (Inches)			Approx. Weight (Lbs.)	Mtg Type W - Wall F - Floor	Wiring Diagram <small>(Pages 258-269)</small>
			Width	Depth	Height			
7.5	DM007JCCF	UH1	16.75	14	22	150	W or F	SCD 8
11	DM011JCCF	UH1	16.75	14	22	170	W or F	SCD 8
14	DM014JCCF	UH1	16.75	14	22	210	W or F	SCD 8
20	DM020JCCF	UH2	21.5	19.5	29	270	W or F	SCD 7
27	DM027JCCF	UH2	21.5	19.5	29	330	W or F	SCD 7
34	DM034JCCF	UH2	21.5	19.5	29	350	W or F	SCD 7
40	DM040JCC	UH2	21.5	19.5	29	380	W or F	SCD 7
51	DM051JCC	UH2	21.5	19.5	29	450	W or F	SCD 7
63	DM063JCC	UH3	26	21	38	550	W or F	SCD 7
75	DM075JCC	UH3	26	21	38	600	W or F	SCD 7
93	DM093JCC	UH3	26	21	38	630	F	SCD 7
118	DM118JCC	UH3	26	21	38	880	F	SCD 7
145	DM145JCC	UH4	30	24	39	930	F	SCD 7
175	DM175JCC	UH4	30	24	39	1100	F	SCD 7
220	DM220JCC	UJ1	39.5	30	50	1450	F	SCD 9
275	DM275JCC	UJ1	39.5	30	50	1680	F	SCD 9
330	DM330JCC	UJ1	39.5	30	50	1850	F	SCD 9
440	DM440JCC	UJ2	48.5	34	59	2350	F	SCD 10
550	DM550JCC	UJ2	48.5	34	59	2800	F	SCD 10
660	DM660JCC	UJ3	51.5	39	66	3250	F	SCD 10

For Shielded units, just replace the suffix 'CF' or 'C' with the suffix 'KF' or 'K' to the above part numbers. (i.e. DM014JCKF or DM051JCK)



COPPER WOUND, THREE PHASE

Products listed on this page are available as 'CE Mark' products. Please consult our sales office.

Selection Tables

Listed are our standard voltages. Other primary and secondary voltages available are 208, 240, 380 and 600.

460 Primary Volts 460 Secondary Volts 60 Hz

kVA	Catalog Number	Case Style <small>(Pages 254-257)</small>	Approx. Dimensions (Inches)			Approx. Weight (Lbs.)	Mtg Type W - Wall F - Floor	Wiring Diagram <small>(Pages 258-269)</small>
			Width	Depth	Height			
7.5	DM007JJCF	UH1	16.75	14	22	150	W or F	SCD 8
11	DM011JJCF	UH1	16.75	14	22	170	W or F	SCD 8
14	DM014JJCF	UH1	16.75	14	22	210	W or F	SCD 8
20	DM020JJCF	UH2	21.5	19.5	29	270	W or F	SCD 7
27	DM027JJCF	UH2	21.5	19.5	29	330	W or F	SCD 7
34	DM034JJCF	UH2	21.5	19.5	29	350	W or F	SCD 7
40	DM040JJC	UH2	21.5	19.5	29	380	W or F	SCD 7
51	DM051JJC	UH2	21.5	19.5	29	450	W or F	SCD 7
63	DM063JJC	UH3	26	21	38	550	W or F	SCD 7
75	DM075JJC	UH3	26	21	38	600	W or F	SCD 7
93	DM093JJC	UH3	26	21	38	630	F	SCD 7
118	DM118JJC	UH3	26	21	38	880	F	SCD 7
145	DM145JJC	UH4	30	24	39	930	F	SCD 7
175	DM175JJC	UH4	30	24	39	1100	F	SCD 7
220	DM220JJC	UJ1	39.5	30	50	1450	F	SCD 9
275	DM275JJC	UJ1	39.5	30	50	1680	F	SCD 9
330	DM330JJC	UJ1	39.5	30	50	1850	F	SCD 9
440	DM440JJC	UJ2	48.5	34	59	2350	F	SCD 10
550	DM550JJC	UJ2	48.5	34	59	2800	F	SCD 10
660	DM660JJC	UJ3	51.5	39	66	3250	F	SCD 10

For Shielded units, just replace the suffix 'CF' or 'C' with the suffix 'KF' or 'K' to the above part numbers.
(i.e. DM014JJKF or DM051JJK)

480 Primary Volts 240 Secondary Volts 60 Hz

kVA	Catalog Number	Case Style <small>(Pages 254-257)</small>	Approx. Dimensions (Inches)			Approx. Weight (Lbs.)	Mtg Type W - Wall F - Floor	Wiring Diagram <small>(Pages 258-269)</small>
			Width	Depth	Height			
7.5	DM007KDCF	UH1	16.75	14	22	150	W or F	SCD 8
11	DM011KDCF	UH1	16.75	14	22	170	W or F	SCD 8
14	DM014KDCF	UH1	16.75	14	22	210	W or F	SCD 8
20	DM020KDCF	UH2	21.5	19.5	29	270	W or F	SCD 7
27	DM027KDCF	UH2	21.5	19.5	29	330	W or F	SCD 7
34	DM034KDCF	UH2	21.5	19.5	29	350	W or F	SCD 7
40	DM040KDC	UH2	21.5	19.5	29	380	W or F	SCD 7
51	DM051KDC	UH2	21.5	19.5	29	450	W or F	SCD 7
63	DM063KDC	UH3	26	21	38	550	W or F	SCD 7
75	DM075KDC	UH3	26	21	38	600	W or F	SCD 7
93	DM093KDC	UH3	26	21	38	630	F	SCD 7
118	DM118KDC	UH3	26	21	38	880	F	SCD 7
145	DM145KDC	UH4	30	24	39	930	F	SCD 7
175	DM175KDC	UH4	30	24	39	1100	F	SCD 7
220	DM220KDC	UJ1	39.5	30	50	1450	F	SCD 9
275	DM275KDC	UJ1	39.5	30	50	1680	F	SCD 9
330	DM330KDC	UJ1	39.5	30	50	1850	F	SCD 9
440	DM440KDC	UJ2	48.5	34	59	2350	F	SCD 10
550	DM550KDC	UJ2	48.5	34	59	2800	F	SCD 10
660	DM660KDC	UJ3	51.5	39	66	3250	F	SCD 10

For Shielded units, just replace the suffix 'CF' or 'C' with the suffix 'KF' or 'K' to the above part numbers.
(i.e. DM014KDKF or DM051KDK)

SECTION 4



COPPER WOUND, THREE PHASE

Products listed on this page are available as 'CE Mark' products. Please consult our sales office.

Selection Tables

Listed are our standard voltages. Other primary and secondary voltages available are 208, 240, 380 and 600.

575 Primary Volts 460 Secondary Volts 60 Hz

kVA	Catalog Number	Case Style <small>(Pages 254-257)</small>	Approx. Dimensions (Inches)			Approx. Weight (Lbs.)	Mtg Type W - Wall F - Floor	Wiring Diagram <small>(Pages 258-269)</small>
			Width	Depth	Height			
7.5	DM007NJCF	UH1	16.75	14	22	150	W or F	SCD 8
11	DM011NJCF	UH1	16.75	14	22	170	W or F	SCD 8
14	DM014NJCF	UH1	16.75	14	22	210	W or F	SCD 8
20	DM020NJCF	UH2	21.5	19.5	29	270	W or F	SCD 7
27	DM027NJCF	UH2	21.5	19.5	29	330	W or F	SCD 7
34	DM034NJCF	UH2	21.5	19.5	29	350	W or F	SCD 7
40	DM040NJC	UH2	21.5	19.5	29	380	W or F	SCD 7
51	DM051NJC	UH2	21.5	19.5	29	450	W or F	SCD 7
63	DM063NJC	UH3	26	21	38	550	W or F	SCD 7
75	DM075NJC	UH3	26	21	38	600	W or F	SCD 7
93	DM093NJC	UH3	26	21	38	630	F	SCD 7
118	DM118NJC	UH3	26	21	38	880	F	SCD 7
145	DM145NJC	UH4	30	24	39	930	F	SCD 7
175	DM175NJC	UH4	30	24	39	1100	F	SCD 7
220	DM220NJC	UJ1	39.5	30	50	1450	F	SCD 9
275	DM275NJC	UJ1	39.5	30	50	1680	F	SCD 9
330	DM330NJC	UJ1	39.5	30	50	1850	F	SCD 9
440	DM440NJC	UJ2	48.5	34	59	2350	F	SCD 10
550	DM550NJC	UJ2	48.5	34	59	2800	F	SCD 10
660	DM660NJC	UJ3	51.5	39	66	3250	F	SCD 10

For Shielded units, just replace the suffix 'CF' or 'C' with the suffix 'KF' or 'K' to the above part numbers. (i.e. DM014NJKF or DM051NJK)

575 Primary Volts 575 Secondary Volts 60 Hz

kVA	Catalog Number	Case Style <small>(Pages 254-257)</small>	Approx. Dimensions (Inches)			Approx. Weight (Lbs.)	Mtg Type W - Wall F - Floor	Wiring Diagram <small>(Pages 258-269)</small>
			Width	Depth	Height			
7.5	DM007NNCF	UH1	16.75	14	22	150	W or F	SCD 8
11	DM011NNCF	UH1	16.75	14	22	170	W or F	SCD 8
14	DM014NNCF	UH1	16.75	14	22	210	W or F	SCD 8
20	DM020NNCF	UH2	21.5	19.5	29	270	W or F	SCD 7
27	DM027NNCF	UH2	21.5	19.5	29	330	W or F	SCD 7
34	DM034NNCF	UH2	21.5	19.5	29	350	W or F	SCD 7
40	DM040NNC	UH2	21.5	19.5	29	380	W or F	SCD 7
51	DM051NNC	UH2	21.5	19.5	29	450	W or F	SCD 7
63	DM063NNC	UH3	26	21	38	550	W or F	SCD 7
75	DM075NNC	UH3	26	21	38	600	W or F	SCD 7
93	DM093NNC	UH3	26	21	38	630	F	SCD 7
118	DM118NNC	UH3	26	21	38	880	F	SCD 7
145	DM145NNC	UH4	30	24	39	930	F	SCD 7
175	DM175NNC	UH4	30	24	39	1100	F	SCD 7
220	DM220NNC	UJ1	39.5	30	50	1450	F	SCD 9
275	DM275NNC	UJ1	39.5	30	50	1680	F	SCD 9
330	DM330NNC	UJ1	39.5	30	50	1850	F	SCD 9
440	DM440NNC	UJ2	48.5	34	59	2350	F	SCD 10
550	DM550NNC	UJ2	48.5	34	59	2800	F	SCD 10
660	DM660NNC	UJ3	51.5	39	66	3250	F	SCD 10

For Shielded units, just replace the suffix 'CF' or 'C' with the suffix 'KF' or 'K' to the above part numbers. (i.e. DM014NNKF or DM051NNK)



TERMINATION DETAILS - NEMA 3R, Drive Isolation Transformers

THREE PHASE, ALUMINUM TERMINATION - AWG(MCM) OR PADS

kVA	VOLTAGE							
	208	230	240	380	416	460	480	575
7.5	#6-#14	#6-#14	#6-#14	#6-#14	#6-#14	#6-#14	#6-#14	#6-#14
11	#6-#14	#6-#14	#6-#14	#6-#14	#6-#14	#6-#14	#6-#14	#6-#14
14	#6-#14	#6-#14	#6-#14	#6-#14	#6-#14	#6-#14	#6-#14	#6-#14
20	#2-#14	#6-#14	#6-#14	#6-#14	#6-#14	#6-#14	#6-#14	#6-#14
27	#2/0-#6	#2-#14	#2-#14	#4-#14	#4-#14	#4-#14	#4-#14	#4-#14
34	#2/0-#6	#2/0-#6	#2/0-#6	#4-#14	#4-#14	#4-#14	#4-#14	#4-#14
40	#250-#6	#2/0-#6	#2/0-#6	#2-#14	#2-#14	#4-#14	#4-#14	#4-#14
51	#250-#6	#250-#6	#250-#6	#2/0-#6	#2-#14	#2-#14	#2-#14	#4-#14
63	Diagram 1C	#250-#6	#250-#6	#2/0-#6	#2/0-#6	#2/0-#6	#2/0-#6	#2-#14
75	Diagram 1C	Diagram 1C	Diagram 1C	#250-#6	#2/0-#6	#2/0-#6	#2/0-#6	#2/0-#6
93	Diagram 1C	Diagram 1C	Diagram 1C	#250-#6	#250-#6	#250-#6	#250-#6	#2/0-#6
118	Diagram 1D	Diagram 1D	Diagram 1D	Diagram 1C	#250-#6	#250-#6	#250-#6	#250-#6
145	Diagram 1D	Diagram 1D	Diagram 1D	Diagram 1C	Diagram 1C	Diagram 1C	Diagram 1C	#250-#6
175	Diagram 1D	Diagram 1D	Diagram 1D	Diagram 1C	Diagram 1C	Diagram 1C	Diagram 1C	Diagram 1C
220	Diagram 2	Diagram 2	Diagram 1D	Diagram 1D	Diagram 1D	Diagram 1D	Diagram 1C	Diagram 1C
275	Diagram 2	Diagram 2	Diagram 2	Diagram 1D	Diagram 1D	Diagram 1D	Diagram 1D	Diagram 1D
330	Diagram 2	Diagram 2	Diagram 2	Diagram 1D	Diagram 1D	Diagram 1D	Diagram 1D	Diagram 1D
440	Diagram 2	Diagram 2	Diagram 2	Diagram 2	Diagram 2	Diagram 2	Diagram 1D	Diagram 1D
550	Diagram 2	Diagram 2	Diagram 2	Diagram 2	Diagram 2	Diagram 2	Diagram 2	Diagram 2
660	Diagram 2	Diagram 2	Diagram 2	Diagram 2	Diagram 2	Diagram 2	Diagram 2	Diagram 2

THREE PHASE, COPPER TERMINATION - AWG(MCM) OR PADS

kVA	VOLTAGE							
	208	230	240	380	416	460	480	575
7.5	#6-#14	#6-#14	#6-#14	#6-#14	#6-#14	#6-#14	#6-#14	#6-#14
11	#6-#14	#6-#14	#6-#14	#6-#14	#6-#14	#6-#14	#6-#14	#6-#14
14	#6-#14	#6-#14	#6-#14	#6-#14	#6-#14	#6-#14	#6-#14	#6-#14
20	#2-#14	#6-#14	#6-#14	#6-#14	#6-#14	#6-#14	#6-#14	#6-#14
27	Diagram 1A	#2-#14	#2-#14	#4-#14	#4-#14	#4-#14	#4-#14	#4-#14
34	Diagram 1A	Diagram 1A	Diagram 1A	#4-#14	#4-#14	#4-#14	#4-#14	#4-#14
40	Diagram 1B	Diagram 1A	Diagram 1A	#2-#14	#2-#14	#4-#14	#4-#14	#4-#14
51	Diagram 1B	Diagram 1B	Diagram 1B	Diagram 1A	#2-#14	#2-#14	#2-#14	#4-#14
63	Diagram 1C	Diagram 1B	Diagram 1B	Diagram 1A	Diagram 1A	Diagram 1A	Diagram 1A	Diagram 1A
75	Diagram 1C	Diagram 1C	Diagram 1C	Diagram 1B	Diagram 1A	Diagram 1A	Diagram 1A	Diagram 1A
93	Diagram 1C	Diagram 1C	Diagram 1C	Diagram 1B	Diagram 1B	Diagram 1B	Diagram 1B	Diagram 1A
118	Diagram 1D	Diagram 1D	Diagram 1D	Diagram 1C	Diagram 1B	Diagram 1B	Diagram 1B	Diagram 1B
145	Diagram 1D	Diagram 1D	Diagram 1D	Diagram 1C	Diagram 1C	Diagram 1C	Diagram 1C	Diagram 1B
175	Diagram 1D	Diagram 1D	Diagram 1D	Diagram 1C	Diagram 1C	Diagram 1C	Diagram 1C	Diagram 1C
220	Diagram 2	Diagram 2	Diagram 1D	Diagram 1D	Diagram 1D	Diagram 1D	Diagram 1C	Diagram 1C
275	Diagram 2	Diagram 2	Diagram 2	Diagram 1D	Diagram 1D	Diagram 1D	Diagram 1D	Diagram 1D
330	Diagram 2	Diagram 2	Diagram 2	Diagram 1D	Diagram 1D	Diagram 1D	Diagram 1D	Diagram 1D
440	Diagram 2	Diagram 2	Diagram 2	Diagram 2	Diagram 2	Diagram 2	Diagram 1D	Diagram 1D
550	Diagram 2	Diagram 2	Diagram 2	Diagram 2	Diagram 2	Diagram 2	Diagram 2	Diagram 2
660	Diagram 2	Diagram 2	Diagram 2	Diagram 2	Diagram 2	Diagram 2	Diagram 2	Diagram 2

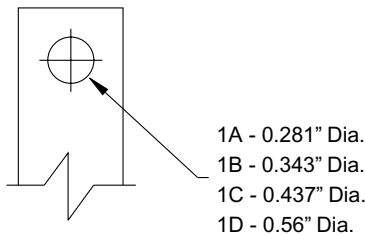


DIAGRAM 1

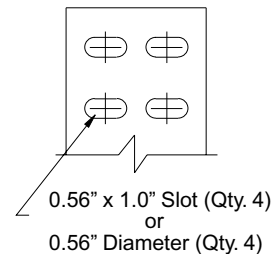


DIAGRAM 2

SECTION 4



GENERAL INFORMATION

ACCESSORIES - GENERAL PURPOSE TRANSFORMERS

SPRINKLER HOODS

(NEMA TYPE 2 ENCLOSURE)

Sprinkler hoods can easily be field installed to protect a transformer from water falling at an angle up to 75° from vertical. A NEMA Type 1 enclosure with a properly installed sprinkler hood will meet NEMA Type 2 requirements.

Use the selection table to the right to select the appropriate sprinkler hood kit. Each kit comes with either 2 or 4 hoods, depending on the case style, to fit on transformer enclosure.

For overall dimensions of the enclosures with a sprinkler hood installed, please refer to the enclosure dimensional drawings.

Factory installed NEMA Type 2 enclosures are also available.

Please contact the nearest Hammond Sales Office for details.

Note: UH style enclosures do not require sprinkler hood kits.

ANTI-VIBRATION PADS AND ISOLATORS

All standard transformers are supplied with installed internal vibration absorbing pads to minimize noise during operation.

Optional external “anti-vibration pads” and “vibration isolators” (for higher noise dampening) are available, and can be used to reduce operating noise even further.

Both kits are resistant to industrial contaminants like oils, acids and alkalis.

WALL MOUNTING KITS

(Used with Sprinkler Hoods)

If wall mounting is desired for a transformer fitted with sprinkler hoods, optional wall mounting brackets can be ordered separately.

Use the selection table to the right to select the appropriate kit. One kit is required for each transformer.



SPRINKLER HOOD KIT AND WALL MOUNTING BRACKET KIT PART NO.'S

Sprinkler Hood Kit Part No.	Wall Mounting Part No.	Case Style
DHA1	WB2	A1
DHA2	WB2	A2
DHH1	WB2	H1
DHH2	WB2	H2
DHH3	N/A	H3
DHH4	N/A	H4
DHH5	WB2	H5
DHH6	WB2	H6
DHH7	N/A	H7
DHH8	N/A	H8
DHJ1	N/A	J1
DHJ2	N/A	J2
DHJ3	N/A	J3
DHJ4	N/A	J4
DHJ5	N/A	J5
DHJ6	N/A	J6
N/A	W1	UH1
N/A	W2	UH2&3
N/A	W1	UH5
N/A	W2	UH6

ANTI-VIBRATION PADS

Part No.	Case Style	Description
P1	A1 - A2	Rubber and steel washer assemblies which replace the standard steel washers
	H1 - H8	
	UH1 - UH8	
P2	J1 - J6	
	UJ1-UJ6	

VIBRATION ISOLATORS

Part No.	Transformer Weight (lb)	Description
NMP1	up to 380	Moulded neoprene and steel plate assemblies to virtually eliminate vibration noise from the transformer to the mounting surface.
NMP2	381 - 760	
NMP3	761 - 1040	
NMP4	1041 - 1880	
NMP5	1881 - 2880	
NMP6	2881 - 4880	



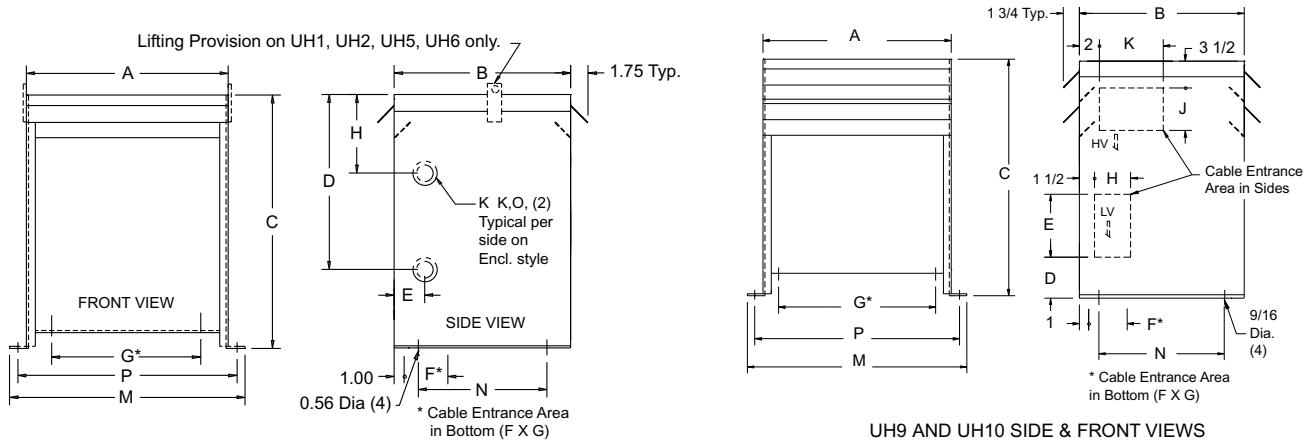
GENERAL INFORMATION



GENERAL INFORMATION

DIMENSIONAL DRAWINGS

'UH' SERIES ENCLOSURES

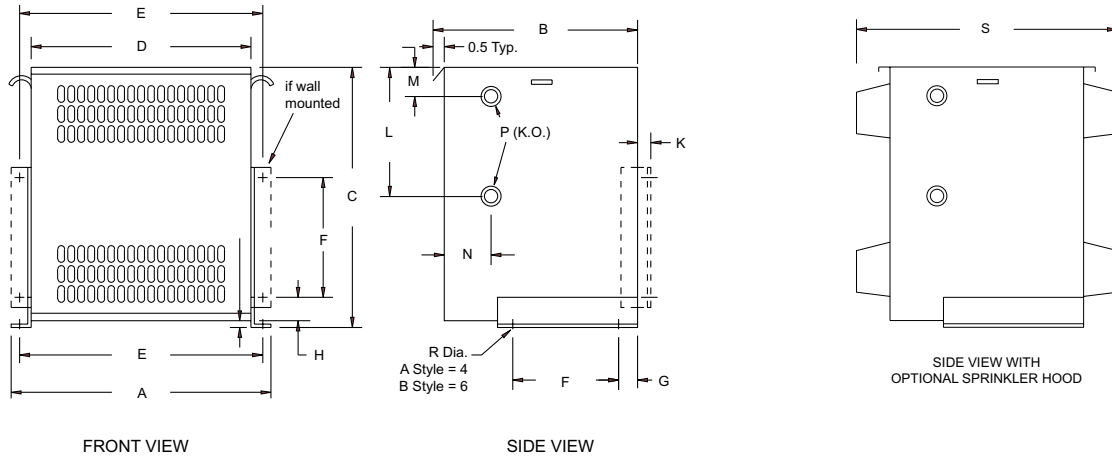


UH9 AND UH10 SIDE & FRONT VIEWS

Case Style	Dimensions in Inches											
	A	B	C	D	E	F	G	H	K	M	N	P
UH1	16.75	14.00	22.00	11.00	2.50	2.25	9.00	6.00	1.38 X 1.75	19.25	9.00	18.25
UH2	21.50	19.50	29.00	15.00	2.50	3.25	14.00	6.00	1.38 X 2.50	24.00	14.50	23.00
UH3	26.00	21.00	38.00	24.00	3.00	4.75	18.00	8.00	2.00 X 3.00	28.50	16.00	27.50
UH4	30.00	24.00	39.00	24.00	3.00	3.75	20.00	9.00	2.00 X 3.00	32.50	19.00	31.50
UH5	13.00	14.00	23.00	10.00	2.50	2.25	6.00	6.00	1.38 X 1.75	15.50	9.00	14.50
UH6	16.00	19.00	31.00	15.00	2.50	2.75	7.00	6.00	2.00 X 3.00	18.50	14.00	17.50
UH7	19.50	21.00	35.00	20.00	3.00	5.25	10.00	8.00	2.00 X 3.00	22.00	16.00	21.00
UH8	24.00	25.00	39.00	24.00	3.00	4.75	11.00	9.00	2.00 X 3.00	26.50	20.00	25.50
UH9	26.50	26.00	44.00	5.00	4.00	5.00	22.50	4.50	10.00	28.50	21.50	27.50
UH10	34.00	30.00	44.00	5.00	6.00	6.00	26.50	5.00	10.00	32.50	29.00	31.50

Note: J dimension for UH9 = 3.50". J dimension for UH10 = 4.00"

'A' & 'H' SERIES ENCLOSURES



FRONT VIEW

SIDE VIEW

SIDE VIEW WITH OPTIONAL SPRINKLER HOOD

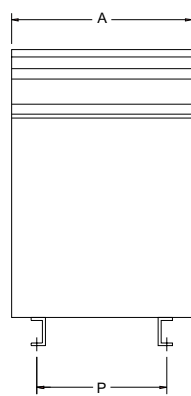
Case Style	Dimensions in Inches														
	A	B	C	D	E	F	G	H	K	L	M	N	P	R	S
A1*	12.00	7.00	10.20	10.00	11.40	5.00	0.50	0.50	0.60	5.50	1.60	1.00	0.5 X 0.75	0.31	10.00
A2*	17.25	11.25	14.00	14.75	16.50	7.00	0.90	0.90	0.40	9.50	2.00	1.00	0.75 X 1.0	0.40	13.25
H1	19.50	16.50	19.00	16.50	18.50	10.00	2.00	3.25	2.50	10.00	2.00	2.50	1.0 X 1.25	0.56	22.50
H2	24.50	20.50	24.50	21.50	23.50	10.00	2.00	3.25	2.50	12.00	2.50	2.50	1.0 X 2.0	0.56	26.50
H3	30.00	24.00	32.50	27.00	29.00	16.00	2.00	3.25	2.50	13.00	3.00	3.00	1.5 X 2.5	0.56	30.00
H4	33.00	26.00	36.00	30.00	32.00	16.00	2.00	3.25	2.50	13.00	3.00	3.00	1.5 X 2.5	0.56	32.00
H5	16.00	16.50	18.00	13.00	15.00	10.00	2.00	3.25	2.50	7.50	2.00	2.50	1.0 X 1.25	0.56	22.50
H6	21.25	20.00	28.00	18.25	20.25	10.00	2.00	3.25	2.50	12.50	3.00	2.50	1.5 X 2.5	0.56	26.00
H7	24.00	26.00	30.00	21.00	23.00	16.00	2.00	3.25	2.50	13.00	3.00	3.00	1.5 X 2.5	0.56	32.00
H8	27.00	26.00	36.00	24.00	26.00	16.00	2.00	3.25	2.50	13.00	3.00	3.00	1.5 X 2.5	0.56	32.00

* No ventilation slots in rear.

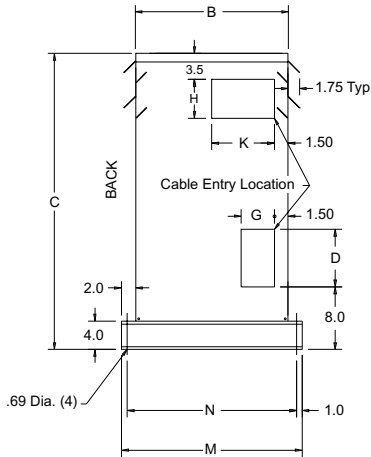
GENERAL INFORMATION

DIMENSIONAL DRAWINGS

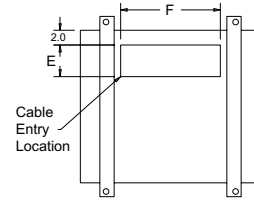
'UJ' SERIES ENCLOSURES



FRONT VIEW



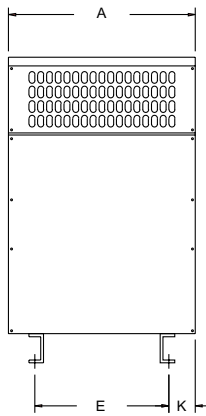
SIDE VIEW



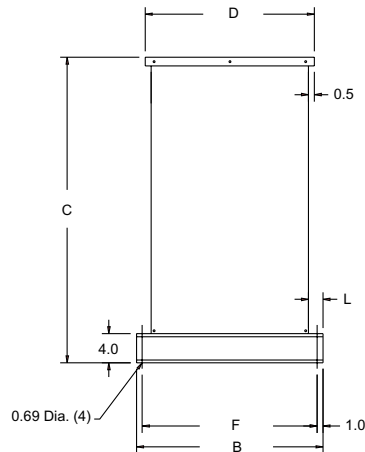
BOTTOM VIEW

Case Style	Dimensions in Inches											
	A	B	C	D	E	F	G	H	K	M	N	P
UJ1	39.50	30.00	50.00	10.00	7.50	21.50	8.00	6.50	13.50	34.00	32.00	24.00
UJ2	48.50	34.00	59.00	13.00	8.50	25.00	9.00	8.50	15.50	38.00	36.00	27.50
UJ3	51.50	39.00	66.00	16.00	9.50	31.50	10.00	11.50	18.00	43.00	41.00	34.00
UJ4	32.00	28.50	50.00	10.00	8.50	19.50	9.00	6.50	12.75	32.50	30.50	22.00
UJ5	36.00	29.50	44.00	5.00	6.50	21.50	10.00	6.50	12.75	33.00	31.00	24.00
UJ6	64.00	40.00	68.00	16.00	10.50	37.50	11.00	11.50	18.00	43.50	41.50	40.00

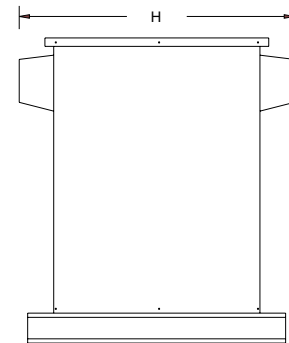
'J' SERIES ENCLOSURES



FRONT VIEW



SIDE VIEW



SIDE VIEW WITH
OPTIONAL SPRINKLER HOOD

Case Style	Dimensions in Inches								
	A	B	C	D	E	F	H	K	L
J1	39.72	37.00	50.00	34.25	24.00	35.00	40.00	7.75	2.00
J2	48.75	41.00	59.00	38.25	27.50	39.00	44.00	10.50	2.00
J3	51.75	46.00	66.00	43.25	34.00	44.00	49.00	8.75	2.00
J4	32.25	35.00	50.00	32.25	22.00	33.00	38.00	5.00	2.00
J5	36.00	33.00	44.00	29.50	24.00	31.00	35.50	6.00	2.25
J6	64.00	43.50	68.00	40.00	40.00	41.50	46.00	12.00	2.25

GENERAL
INFORMATION



GENERAL INFORMATION

ELECTRICAL SCHEMATICS AND CONNECTION DIAGRAMS

SCD 1

SCHEMATIC		CONNECTIONS		
	Primary Volts	Connect lines to	Inter-connect	
	480 416	H1, H4	H2-H3	
	240 208	H1, H4	H1-H3, H2-H4	
	Secondary Volts	Connect lines to	Inter-connect	
	240	X1, X4	X2-X3	
	120/240	X1, X2, X4	X2-X3	
120	X1, X4	X2-X4, X1-X3		

SCD 2

SCHEMATIC		CONNECTIONS		
	Primary Volts	Connect lines to	Inter-connect	
	480	H1, H2	1-2	
	468	H1, H2	2-3	
	456	H1, H2	3-4	
	240	H1, H2	H1-2, H2-1	
	228	H1, H2	H1-4, H2-3	
Secondary Volts	Connect lines to	Inter-connect		
240	X1, X4	X2-X3		
120/240	X1, X2, X4	X2-X3		
120	X1, X4	X2-X4, X1-X3		

SCD 3

SCHEMATIC		CONNECTIONS		
	Primary Volts	Connect lines to	Inter-connect	
	504	H1, H4	1-H2, 2-H3, H2-H3	
	492	H1, H4	2-H3, 3-H2, H2-H3	
	480	H1, H4	3-H2, 4-H3, H2-H3	
	468	H1, H4	4-H3, 5-H2, H2-H3	
	456	H1, H4	5-H2, 6-H3, H2-H3	
	252	H1, H4	1-H2, 2-H3, H1-H3, H2-H4	
	240	H1, H4	3-H2, 4-H3, H1-H3, H2-H4	
	228	H1, H4	5-H2, 6-H3, H1-H3, H2-H4	
	Secondary Volts	Connect lines to	Inter-connect	
240	X1, X4	X2-X3		
120/240	X1, X2, X4	X2-X3		
120	X1, X4	X2-X4, X1-X3		

SCD 4

SCHEMATIC		CONNECTIONS		
	Primary Volts	Connect lines to	Inter-connect	
	208 277 347 380 416 600	H1, H2	---	
	Secondary Volts	Connect lines to	Inter-connect	
	240	X1, X4	X2-X3	
120/240	X1, X2, X4	X2-X3		
120	X1, X4	X2-X4, X1-X3		

GENERAL INFORMATION

GENERAL INFORMATION

ELECTRICAL SCHEMATICS AND CONNECTION DIAGRAMS

SCD 5

SCHEMATIC		CONNECTIONS		
	Primary Volts		Connect lines to	Inter-connect
	208 240 277 416 480 600	H1, H2	1-2	
	198 228 263 395 456 570	H1, H2	2-3	
	187 216 249 374 432 540	H1, H2	3-4	
120 208 240	H1, H2	H1-2, H2-1		
108 187 216	H1, H2	H1-4, H2-3		
Secondary Volts		Connect lines to	Inter-connect	
240	X1, X4	X2-X3		
120/240	X1, X2, X4	X2-X3		
120	X1, X4	X2-X4, X1-X3		

SCD 6

SCHEMATIC		CONNECTIONS		
	Primary Volts		Connect lines to	Inter-connect
	218 291 437 504 630 2520 4368	H1, H2	1-2	
	213 284 426 492 615 2460 4264	H1, H2	2-3	
	208 277 416 480 600 2400 4160	H1, H2	3-4	
203 270 406 468 585 2340 4056	H1, H2	4-5		
198 263 395 456 570 2280 3952	H1, H2	5-6		
Secondary Volts		Connect lines to	Inter-connect	
240	X1, X4	X2-X3		
120/240	X1, X2, X4	X2-X3		
120	X1, X4	X2-X4, X1-X3		

SCD 7

SCHEMATIC		CONNECTIONS		
	Primary Volts		Connect lines to	Inter-connect
	218 252 437 483 504 630	H1, H2, H3	1	
	208 240 416 460 480 600	H1, H2, H3	2	
	198 228 395 437 456 570	H1, H2, H3	3	
Secondary Volts		Connect lines to		
208 230 240 380 416 460 480 600	X1, X2, X3			
120 133 139 220 240 265 277 347	X1, X0	X2, X0	X3, X0	

SCD 8

SCHEMATIC		CONNECTIONS		
	Primary Volts		Connect lines to	Inter-connect
	218 252 437 483 504 630 2520 4368	H1, H2, H3	1-2	
	208 240 416 460 480 600 2400 4160	H1, H2, H3	2-3	
	198 228 395 437 456 570 2280 3952	H1, H2, H3	3-4	
Secondary Volts		Connect lines to		
208 230 240 380 416 460 480 600	X1, X2, X3			
120 133 139 220 240 265 277 347	X1, X0	X2, X0	X3, X0	

GENERAL INFORMATION



GENERAL INFORMATION

ELECTRICAL SCHEMATICS AND CONNECTION DIAGRAMS

SCD 9

SCHEMATIC		CONNECTIONS			
		Primary Volts		Connect lines to	Inter-connect
		218 252 437 483 504 630 2520 4368	H1, H2, H3	1	
		Secondary Volts		Connect lines to	Inter-connect
		213 246 426 574 492 615 2460 4264	H1, H2, H3	2	
		208 240 416 460 480 600 2400 4160	H1, H2, H3	3	
		203 234 406 449 468 585 2340 4056	H1, H2, H3	4	
		198 228 395 437 456 570 2280 3952	H1, H2, H3	5	
		Secondary Volts		Connect lines to	Inter-connect
		208 380 416 480 600	X1, X2, X3	-	
		120 220 240 277 347	X1, X0	-	
			X2, X0	-	
			X3, X0	-	

SCD 10

SCHEMATIC		CONNECTIONS			
		Primary Volts		Connect lines to	Inter-connect
		218 252 437 483 504 630 2520 4368	H1, H2, H3	1-2	
		Secondary Volts		Connect lines to	Inter-connect
		213 246 426 574 492 615 2460 4264	H1, H2, H3	2-3	
		208 240 416 460 480 600 2400 4160	H1, H2, H3	3-4	
		203 234 406 449 468 585 2340 4056	H1, H2, H3	4-5	
		198 228 395 437 456 570 2280 3952	H1, H2, H3	5-6	
		Secondary Volts		Connect lines to	Inter-connect
		208 380 416 480 600	X1, X2, X3	-	
		120 220 240 277 347	X1, X0	-	
			X2, X0	-	
			X3, X0	-	

SCD 11

SCHEMATIC		CONNECTIONS		
		Primary Volts		Inter-connect
		252 504	H1, H2, H3	1
		Secondary Volts		Inter-connect
		240 480	H1, H2, H3	2
		228 456	H1, H2, H3	3
		Secondary Volts		Inter-connect
		240	X1, X2, X3	-

SCD 12

SCHEMATIC		CONNECTIONS		
		Primary Volts		Inter-connect
		480 600	H1, H2, H3	1-2
		Secondary Volts		Inter-connect
		456 570	H1, H2, H3	2-3
		432 540	H1, H2, H3	3-4
		Secondary Volts		Inter-connect
		240	X1, X2, X3	-

GENERAL INFORMATION

ELECTRICAL SCHEMATICS AND CONNECTION DIAGRAMS

SCD 13

SCHEMATIC		CONNECTIONS		
	Primary Volts	Connect lines to	Inter-connect	
	480 600	H1, H2, H3	1-2	
	456 570	H1, H2, H3	2-3	
432 540	H1, H2, H3	3-4		
Secondary Volts	Connect lines to	Inter-connect		
240	X1, X2, X3	-		
120	X1, X6	-		
	X3, X6	-		

SCD 14

SCHEMATIC		CONNECTIONS		
	Primary Volts	Connect lines to	Inter-connect	
	504	H1, H2, H3	1	
	492	H1, H2, H3	2	
480	H1, H2, H3	3		
468	H1, H2, H3	4		
456	H1, H2, H3	5		
Secondary Volts	Connect lines to	Inter-connect		
240	X1, X2, X3	-		
120	X1, X6	-		
	X3, X6	-		

SCD 15

SCHEMATIC		CONNECTIONS		
	Primary Volts	Connect lines to	Inter-connect	
	504	H1, H2, H3	1-2	
	492	H1, H2, H3	2-3	
480	H1, H2, H3	3-4		
468	H1, H2, H3	4-5		
456	H1, H2, H3	5-6		
Secondary Volts	Connect lines to	Inter-connect		
240	X1, X2, X3	-		
120	X1, X6	-		
	X3, X6	-		

SCD 16

SCHEMATIC		CONNECTIONS		
	Primary Volts	Connect lines to	Inter-connect	
	218 504 504 630	H1, H2, H3	1	
	208 480 480 600	H1, H2, H3	2	
198 456 456 570	H1, H2, H3	3		
Secondary Volts	Connect lines to	Inter-connect		
240	X1, X2, X3	-		

GENERAL INFORMATION



GENERAL INFORMATION

ELECTRICAL SCHEMATICS AND CONNECTION DIAGRAMS

SCD 17

SCHEMATIC	CONNECTIONS		
	Primary Volts	Connect lines to	Inter-connect
	504 630	H1, H2, H3	1
	492 615	H1, H2, H3	2
	480 600	H1, H2, H3	3
	468 585	H1, H2, H3	4
	456 570	H1, H2, H3	5
	Secondary Volts	Connect lines to	Inter-connect
	240	X1, X2, X3	

SCD 18

SCHEMATIC	CONNECTIONS		
	Primary Volts	Connect lines to	Inter-connect
	218 437 504 630	H1, H6	-
	213 426 492 615	H1, H5	-
	208 416 480 600	H1, H4	-
	203 406 468 585	H1, H3	-
	198 395 456 570	H1, H2	-
	Secondary Volts	Connect lines to	Inter-connect
	240	X1, X4	X2-X3
	120/240	X1, X2, X4	X2-X3
	120	X1, X4	X2-X4, X1-X3

SCD 19

SCHEMATIC	CONNECTIONS			
	Primary Volts	Connect lines to	Inter-connect	
	504	H1, H4	1-H2, 2-H3, H2-H3	
	492	H1, H4	3-H2, 2-H3, H2-H3	
	480	H1, H4	3-H2, 4-H3, H2-H3	
	468	H1, H4	5-H2, 4-H3, H2-H3	
	456	H1, H4	5-H2, 6-H3, H2-H3	
	444	H1, H4	7-H2, 6-H3, H2-H3	
	432	H1, H4	7-H2, 8-H3, H2-H3	
	252	H1, H4	1-H2, 2-H3, H1-H3, H2-H4	
	240	H1, H4	3-H2, 4-H3, H1-H3, H2-H4	
	228	H1, H4	5-H2, 6-H3, H1-H3, H2-H4	
	216	H1, H4	7-H2, 8-H3, H1-H3, H2-H4	
		Secondary Volts	Connect lines to	Inter-connect
		240	X1, X4	X2- X3
	120	X1, X2	X1-X3, X2-X4	
	120/240	X1, X2, X4	X2-X3	

SCD 20

SCHEMATIC	CONNECTIONS		
	Primary Volts	Connect lines to	Inter-connect
	218 252 291 437 504 630	H1, H4	-
	208 240 277 416 480 600	H1, H3	-
	198 228 263 395 456 570	H1, H2	-
	188 216 249 374 432 540	H1, H2	-
		Secondary Volts	Connect lines to
	240	X1, X4	X2-X3
	120	X1, X2	X1-X3, X2-X4
		X1, X2, X4	X2-X3

GENERAL INFORMATION

ELECTRICAL SCHEMATICS AND CONNECTION DIAGRAMS

SCD 21

SCHEMATIC	CONNECTIONS		
	Primary Volts	Connect lines to	Inter-connect
	218 504 630	H1, H2, H3	1-H1, 1-H2, 1-H3
	213 492 615	H1, H2, H3	2-H1, 2-H2, 2-H3
	208 480 600	H1, H2, H3	3-H1, 3-H2, 3-H3
	203 468 585	H1, H2, H3	4-H1, 4-H2, 4-H3
	198 456 570	H1, H2, H3	5-H1, 5-H2, 5-H3
	193 444 556	H1, H2, H3	6-H1, 6-H2, 6-H3
	188 432 542	H1, H2, H3	7-H1, 7-H2, 7-H3
	Secondary Volts	Connect lines to	Inter-connect
	208	X1, X2, X3	-
	120	X1, X0 X2, X0 X3, X0	- - -

SCD 22

SCHEMATIC	CONNECTIONS		
	Primary Volts	Connect lines to	Inter-connect
	218 504	H1, H2, H3	1-2
	213 492	H1, H2, H3	2-3
	208 480	H1, H2, H3	3-4
	203 468	H1, H2, H3	4-5
	198 456	H1, H2, H3	5-6
	193 444	H1, H2, H3	6-7
	188 432	H1, H2, H3	7-8
	Secondary Volts	Connect lines to	Inter-connect
	208	X1, X2, X3	-
	120	X1, X0 X2, X0 X3, X0	- - -

SCD 23

SCHEMATIC	CONNECTIONS		
	Primary Volts	Connect lines to	Inter-connect
	504	H1, H2, H3	1-H1, 1-H2, 1-H3
	492	H1, H2, H3	2-H1, 2-H2, 2-H3
	480	H1, H2, H3	3-H1, 3-H2, 3-H3
	468	H1, H2, H3	4-H1, 4-H2, 4-H3
	456	H1, H2, H3	5-H1, 5-H2, 5-H3
	444	H1, H2, H3	6-H1, 6-H2, 6-H3
	432	H1, H2, H3	7-H1, 7-H2, 7-H3
	Secondary Volts	Connect lines to	Inter-connect
	240	X1, X2, X3	-
	120	X1, X6 X3, X6	- -

GENERAL
INFORMATION



GENERAL INFORMATION

ELECTRICAL SCHEMATICS AND CONNECTION DIAGRAMS

SCD 24

SCHEMATIC	CONNECTIONS		
	Primary Volts	Connect lines to	Inter-connect
	504	H1, H2, H3	1-2
	492	H1, H2, H3	2-3
	480	H1, H2, H3	3-4
	468	H1, H2, H3	4-5
	456	H1, H2, H3	5-6
	444	H1, H2, H3	6-7
	432	H1, H2, H3	7-8
	Secondary Volts	Connect lines to	Inter-connect
	240	X1, X2, X3	-
	120	X1, X6 X3, X6	- -

SCD 25

SCHEMATIC	CONNECTIONS		
	Primary Volts	Connect lines to	Inter-connect
	208 230 240	X1, X2, X3	1-X1, 1-X2, 1-X3
	198 218 228	X1, X2, X3	2-X1, 2-X2, 2-X3
	188 207 216	X1, X2, X3	3-X1, 3-X2, 3-X3
	Secondary Volts	Connect lines to	
	230 260 460 480	H1, H2, H3	
	133 139 265 277	H1, H0 H2, H0 H3, H0	

SCD 26

SCHEMATIC	CONNECTIONS		
	Primary Volts	Connect lines to	Inter-connect
	208 240	X1, X2, X3	1-2
	198 228	X1, X2, X3	2-3
	188 216	X1, X2, X3	3-4
	Secondary Volts	Connect lines to	
	230 260 460 480	H1, H2, H3	
	133 139 265 277	H1, H0 H2, H0 H3, H0	

SCD 27

SCHEMATIC	CONNECTIONS		
	Primary Volts	Connect lines to	Inter-connect
	218	X1, X2, X3	1-X1, 1-X2, 1-X3
	213	X1, X2, X3	2-X1, 2-X2, 2-X3
	208	X1, X2, X3	3-X1, 3-X2, 3-X3
	203	X1, X2, X3	4-X1, 4-X2, 4-X3
	198	X1, X2, X3	5-X1, 5-X2, 5-X3
	193	X1, X2, X3	6-X1, 6-X2, 6-X3
	188	X1, X2, X3	7-X1, 7-X2, 7-X3
	Secondary Volts	Connect lines to	
	208 230 240 480	H1, H2, H3	
	120 133 133 277	H1, H0 H2, H0 H3, H0	

GENERAL INFORMATION



GENERAL INFORMATION

ELECTRICAL SCHEMATICS AND CONNECTION DIAGRAMS

SCD 28

SCHEMATIC	CONNECTIONS		
	Primary Volts	Connect lines to	Inter-connect
	218	X1, X2, X3	1-2
	213	X1, X2, X3	2-3
	208	X1, X2, X3	3-4
	203	X1, X2, X3	4-5
	198	X1, X2, X3	5-6
	193	X1, X2, X3	6-7
	188	X1, X2, X3	7-8
	Secondary Volts	Connect lines to	
	208 240 480	H1, H2, H3	
	120 133 277	H1, H0 H2, H0 H3, H0	

SCD 29

SCHEMATIC	CONNECTIONS		
	Primary Volts	Connect lines to	Inter-connect
	504	H1, H2, H3	1-H1, 1-H2, 1-H3
	492	H1, H2, H3	2-H1, 2-H2, 2-H3
	480	H1, H2, H3	3-H1, 3-H2, 3-H3
	468	H1, H2, H3	4-H1, 4-H2, 4-H3
	456	H1, H2, H3	5-H1, 5-H2, 5-H3
	444	H1, H2, H3	6-H1, 6-H2, 6-H3
	432	H1, H2, H3	7-H1, 7-H2, 7-H3
	Secondary Volts	Connect lines to	Inter-connect
240	X1, X2, X3	-	

SCD 30

SCHEMATIC	CONNECTIONS		
	Primary Volts	Connect lines to	Inter-connect
	504	H1, H2, H3	1-2
	492	H1, H2, H3	2-3
	480	H1, H2, H3	3-4
	468	H1, H2, H3	4-5
	456	H1, H2, H3	5-6
	444	H1, H2, H3	6-7
	432	H1, H2, H3	7-8
	Secondary Volts	Connect lines to	Inter-connect
240	X1, X2, X3	-	

SCD 31

SCHEMATIC	CONNECTIONS		
	Connect to	Step Down	Step Up
	Lines from Supply	H1, H2, H3	X1, X2, X3
	Lines to Load Neutral	X1, X2, X3 X0	H1, H2, H3 H0

GENERAL INFORMATION

GENERAL INFORMATION

ELECTRICAL SCHEMATICS AND CONNECTION DIAGRAMS

SCD 32

SCHEMATIC		CONNECTIONS		
	Primary Volts	Connect lines to	Inter-connect	
	208 240 416 480 600	H1, H2, H3	1	
	198 228 395 456 570	H1, H2, H3	2	
	187 216 374 432 540	H1, H2, H3	3	
	Secondary Volts	Connect lines to		
	208 230 240 380 416 460 480 600	X1, X2, X3		
	120 133 139 220 240 265 277 347	X1, X0	X2, X0	X3, X0

SCD 33

SCHEMATIC		CONNECTIONS		
	Primary Volts	Connect lines to	Inter-connect	
	208 240 416 480 600	H1, H2, H3	1-2	
	198 228 395 456 570	H1, H2, H3	2-3	
	187 216 374 432 540	H1, H2, H3	3-4	
	Secondary Volts	Connect lines to		
	208 380 416 480 600	X1, X2, X3		
	120 220 240 277 347	X1, X0	X2, X0	X3, X0

SCD 34

SCHEMATIC		CONNECTIONS		
	Primary Volts	Connect lines to	Inter-connect	
	218 252	H1, H2, H3	1	
	213 246	H1, H2, H3	2	
	208 240	H1, H2, H3	3	
	203 234	H1, H2, H3	4	
	198 228	H1, H2, H3	5	
	Secondary Volts	Connect lines to		
	460 480 600	X1, X2, X3		
	265 277 347	X1, X0	X2, X0	X3, X0

SCD 35

SCHEMATIC		CONNECTIONS		
	Primary Volts	Connect lines to	Inter-connect	
	218 252	H1, H2, H3	1-2	
	213 246	H1, H2, H3	2-3	
	208 240	H1, H2, H3	3-4	
	203 234	H1, H2, H3	4-5	
	198 228	H1, H2, H3	5-6	
	Secondary Volts	Connect lines to		
	460 480 600	X1, X2, X3		
	265 277 347	X1, X0	X2, X0	X3, X0

GENERAL INFORMATION

ELECTRICAL SCHEMATICS AND CONNECTION DIAGRAMS

SCD 36

SCHEMATIC		CONNECTIONS		
		Primary Volts	Connect lines to	Inter-connect
		218 252	X1, X2, X3	1-X1, 1-X2, 1-X3
		208 240	X1, X2, X3	2-X1, 2-X2, 2-X3
		198 228	X1, X2, X3	3-X1, 3-X2, 3-X3
		Secondary Volts	Connect lines to	Inter-connect
		480	H1, H2, H3	-
		277	H1, H0	-
			H2, H0	-
		H3, H0	-	

SCD 37

SCHEMATIC		CONNECTIONS		
		Primary Volts	Connect lines to	Inter-connect
		218 252	X1, X2, X3	1-2
		208 240	X1, X2, X3	2-3
		198 228	X1, X2, X3	3-4
		Secondary Volts	Connect lines to	Inter-connect
		480	H1, H2, H3	-
		277	H1, H0	-
			H2, H0	-
		H3, H0	-	

SCD 38

SCHEMATIC		CONNECTIONS		
		Connect to	Step Down	Step Up
		Lines from Supply	H1, H2, H3	X1, X2, X3
		Lines to Load Neutral	X1, X2, X3 X0	H1, H2, H3 H0

SCD 39

SCHEMATIC		CONNECTIONS		
		Primary Volts	Connect lines to	Inter-connect
		120	H1, H2	---
		Secondary Volts	Connect lines to	Inter-connect
		120	X1, X2	---

GENERAL INFORMATION



GENERAL INFORMATION

SCD 40

SCHEMATIC	CONNECTIONS		
	Primary Volts	Connect lines to	Inter-connect
	208	H1, H2	---
	Secondary Volts	Connect lines to	Inter-connect
	120	X1, X2	---

SCD 41

SCHEMATIC	CONNECTIONS		
	Primary Volts	Connect lines to	Inter-connect
	240	H1, H2	---
	Secondary Volts	Connect lines to	Inter-connect
	120	X1, X2	---

SCD 42

SCHEMATIC	CONNECTIONS		
	Primary Volts	Connect lines to	Inter-connect
	630	H1, H2, H3	1-2
	600	H1, H2, H3	2-3
	570	H1, H2, H3	3-4
Secondary Volts	Connect lines to	Inter-connect	
240	X1, X2, X3	---	

SCD 43

SCHEMATIC	CONNECTIONS		
	Primary Volts	Connect lines to	Inter-connect
	480	H1, H2	---
	Secondary Volts	Connect lines to	Inter-connect
	120	X1, X2	---

SCD 44

SCHEMATIC	CONNECTIONS		
	Primary Volts	Connect lines to	Inter-connect
	600	H1, H2	---
	Secondary Volts	Connect lines to	Inter-connect
	120	X1, X2	---

GENERAL
INFORMATION

GENERAL INFORMATION

SCD 45

SCHEMATIC		CONNECTIONS		
		Primary Volts	Connect lines to	Inter-connect
		440 416 400 380 220 208 200 120	H1, H10 H1, H9 H1, H8 H1, H7 H1, H10 H1, H9 H1, H8 H1, H7	H5-H6 H4-H6 H3-H6 H2-H6 H1-H6, H5-H10 H1-H6, H4-H9 H1-H6, H3-H8 H1-H6, H2-H7
		Secondary Volts	Connect lines to	Inter-connect
		240 120/240 120	X1, X4 X1, X2, X4 X1, X4	X2-X3 X2-X3 X2-X4, X1-X3

SCD 46

SCHEMATIC		CONNECTIONS		
		Primary Volts	Connect lines to	Inter-connect
		440 416 400 380 220 208 200 190	H1, H4 H1, H4 H1, H4 H1, H4 H1, H4 H1, H4 H1, H4 H1, H4	1-H2, 2-H3, H2-H3 3-H2, 4-H3, H2-H3 5-H2, 6-H3, H2-H3 7-H2, 8-H3, H2-H3 1-H2, 2-H3, H1-H3, H2-H4 3-H2, 4-H3, H1-H3, H2-H4 5-H2, 6-H3, H1-H3, H2-H4 7-H2, 8-H3, H1-H3, H2-H4
		Secondary Volts	Connect lines to	Inter-connect
		240 120 120/240	X1, X4 X1, X2 X1, X2, X4	X2- X3 X1-X3, X2-X4 X2-X3

SCD 47

SCHEMATIC		CONNECTIONS		
		Primary Volts	Connect lines to	Inter-connect
		630 504 615 492 600 480 585 468 570 456	H1, H2, H3 H1, H2, H3 H1, H2, H3 H1, H2, H3 H1, H2, H3	1-2 2-3 3-4 4-5 5-6
		Secondary Volts	Connect lines to	Inter-connect
		240	X1, X2, X3	

GENERAL INFORMATION

